



- 3 BEDROOM HOUSE
- EN SUITE SHOWER ROOM/WC
- KITCHEN/DINING ROOM
- DRIVE & GARAGE
- CLOAKROOM
- REDCORATED & NEW CARPETS
- COUNCIL TAX BAND D
- AVAILABLE IMMEDIATELY
- EPC RATING: - 'C'

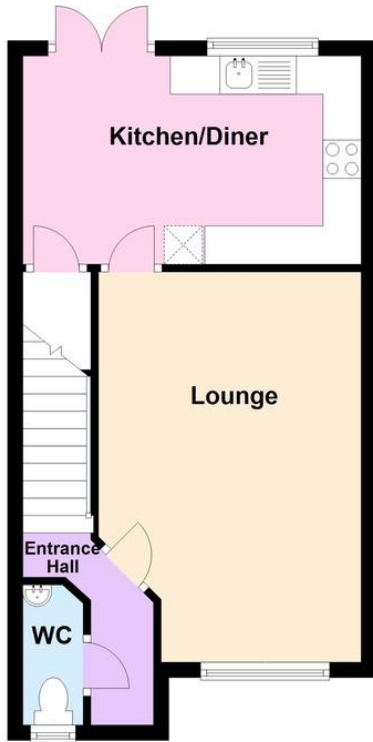
18 The Poplars, Littlehampton BN17 6GZ

£1,495 pcm

HAWKE & METCALFE 
INDEPENDENT ESTATE AGENTS

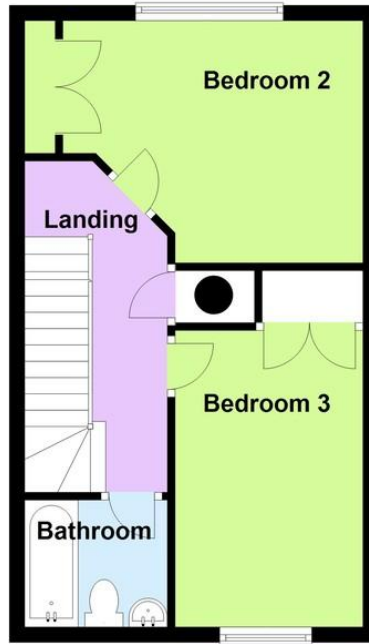
Ground Floor

Approx. 36.5 sq. metres (392.5 sq. feet)



First Floor

Approx. 35.1 sq. metres (377.4 sq. feet)



Second Floor

Approx. 22.6 sq. metres (243.8 sq. feet)



Total area: approx. 94.2 sq. metres (1013.7 sq. feet)

ENTRANCE HALL

CLOAKROOM

LOUNGE

16' 10" x 11' 6" (5.13m x 3.51m)

KITCHEN/DINER

14' 6" x 8' 11" (4.42m x 2.72m)

BEDROOM 1

11' 10" x 11' 2" (3.61m x 3.4m)

ENSUITE SHOWER ROOM/WC

BEDROOM 2

12' 4" x 10' 4" (3.76m x 3.15m)

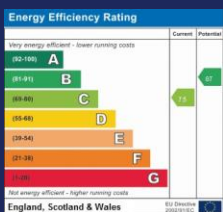
BEDROOM 3

12' 8" x 8' 0" (3.86m x 2.44m)

FAMILY BATHROOM

DRIVE AND GARAGE

The information and measurements contained within these details are for guidance only and do not form part of any contract.



90 THE STREET, RUSTINGTON, WEST
SUSSEX, BN16 3NJ

lettings@hawkemetcalf.co.uk

www.hawkemetcalf.co.uk

01903 850450