



ALLISON  
HOMES



Open plan kitchen/living area

Downstairs cloakroom

Master bedroom with en-suite

Storage cupboards

Allocated parking space

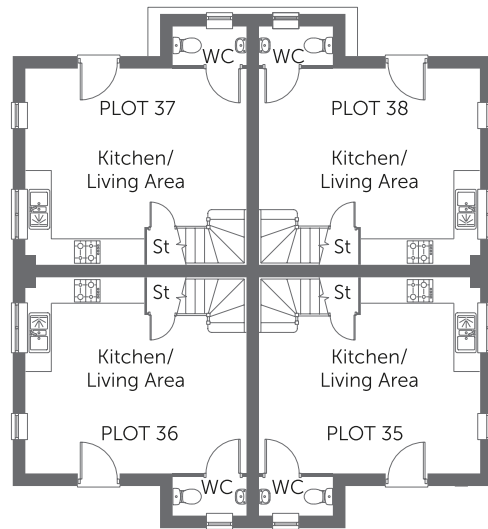
Built with you in mind

THE TALLINGTON

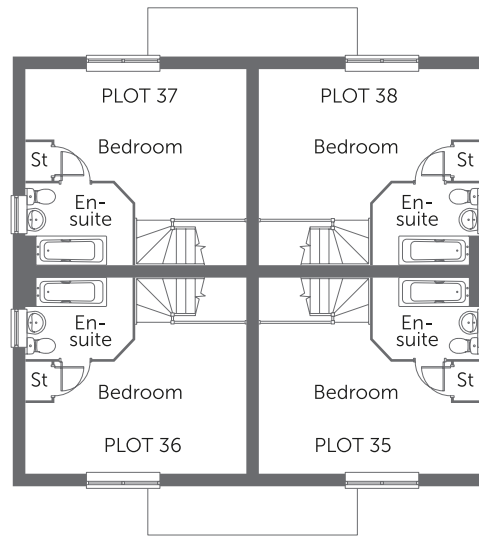
1 bedroom home



ALLISON  
HOMES



GROUND FLOOR



FIRST FLOOR

### Ground Floor

Kitchen/ Living Area	5.26m x 4.67m	17'3" x 15'4"
-------------------------	---------------	---------------

### First Floor

Bedroom	5.26m x 3.56m	17'3" x 11'8"
En-suite	2.54m x 1.93m	8'4" x 6'4"

CONSUMER  
CODE FOR  
HOME BUILDERS

www.consumercode.co.uk



Please note: All measurements shown are approximate maximum room dimensions and are + or - 50mm. They are not intended to be used for carpet sizes, appliance sizes or items of furniture. Floorplans depict a typical layout of this type. Please refer to the development brochure for confirmation of the plot numbers for this particular house type. Depending on plot number, the floor plans for this house type may be opposite to those shown above. Windows and other elevational treatments are subject to change and may differ at each development, please confirm details with your Sales Advisor. For further information on the specific materials for your chosen property, exact plot specification, details of external and internal finishes, dimensions, floorplans and full site-specific details, please speak with your Sales Advisor. Landscaping shown is for illustration purposes only. Every care has been taken to ensure the accuracy of these particulars, but the contents shall not form part of any contract and the vendors reserve the right to alter the specification and/or design without notice.

2111 (559 sq ft)

# THE TALLINGTON

Built with you in mind

1 bedroom home