



BRITISH
PROPERTY
AWARDS

2021



GOLD WINNER

ESTATE AGENT
IN BARNET



£2,200,000

TENURE : FREEHOLD

Claremont Road, Barnet, EN4

Bedrooms : 6

Bathrooms : 7

Reception Rooms : 1

**6 BEDROOM DETACHED
HOUSE**

7 BATHROOMS

**CATCHMENT TO LOCAL
SCHOOLS**

QUIET LOCATION

VERY LARGE RECEPTION

SPACIOUS KITCHEN/ DINER

Mantlestates

2A Church Hill Road, East Barnet, EN4 8TB
office@mantlestates.com | 0208 275 1555
Website: <https://mantlestates.com/>



Mantlestates are pleased to offer this very well presented 6 bedroom detached house with en-suites to every bedroom, utility room & Guest bedroom. Modern fully fitted kitchen & wooden flooring throughout. Set in a quiet location with off-street parking and easy access to Hadley Wood train station.

ENTRANCE HALL 21' 47" x 7' 96" (7.59m x 4.57m)

Double-glazed door to the side & front aspect, wood floor, spotlights.

CLOAKROOM 5' 27" x 3' 15" (2.21m x 1.30m)

Low-level flush w/c, wash hand basin in vanity unit with mixer taps, spotlights, extractor, heated towel rail, tiled floor.

LOUNGE/ DINING AREA 22' 68" x 39' 16" (8.43m x 12.29m)

DINING AREA: Double glazed window to the rear aspect, & bi-folds to the garden, mood lighting, wood floor.

KITCHEN 14' 09" x 12' 46" (4.50m x 4.83m)

Double glazed window to the rear aspect, opening Velux & skylight, wall & base units, quartz worktop, sink drainer with mixer tap, electric hob, extractor, electric oven, fitted microwave, spotlights, fitted dishwasher, fridge/ freezer.

UTILITY ROOM 8' 78" x 8' 85" (4.42m x 4.60m)

Washing machine, clothes dryer, stainless steel sink drainer with mixer taps, wall & base units, tiled floor, spotlights, storage cupboard.

GROUND FLOOR BEDROOM 16' 62" x 13' 03" (6.45m x 4.04m)

Double-glazed window to the front aspect, double glazed window to the side aspect, wood floor, spotlights.

GROUND FLOOR SHOWER ROOM 5' 67" x 4' 65" (3.23m x 2.87m)

Double glazed window to the side aspect, low-level flush w/c, walk-in shower, wash hand basin in vanity unit & mixer tap, tiled floor, extractor, spotlights.

FIRST FLOOR LANDING 13' 01" x 7' 94" (3.99m x 4.52m)

Double glazed arch window to the front aspect, wood floor, spotlights.

FIRST FLOOR FRONT BEDROOM 10' 97" x 13' 77" (5.51m x 5.92m)

Double-glazed window to the front aspect, wood floor, spotlights.

EN-SUITE 8' 02" x 8' 23" (2.49m x 3.02m)

Double glazed window to the side aspect, jacuzzi panel bath with mixer taps, low-level flush w/c, storage cupboard, walk-in shower, wash hand basin in vanity unit with mixer taps, tiled floor, spotlights, extractor.

REAR BEDROOM 11' 49" x 13' 72" (4.60m x 5.79m)

Double glazed to the rear aspect, wood floor, spotlights.

EN-SUITE 6' 03" x 7' 98" (1.91m x 4.62m)

Double glazed window to the rear aspect, wash hand basin in vanity unit with mixer taps, jacuzzi bath with mixer tap, low-level flush w/c, walk-in shower, tiled floor, spotlights.

REAR MIDDLE BEDROOM 14' 77" x 11' 13" (6.22m x 3.68m)

Double-glazed window to the rear aspect, wood floor, spotlights.

STORAGE CUPBOARD 4' 51" x 4' 21" (2.51m x 1.75m)

Lighting & wood floor.

EN-SUITE 8' 23" x 3' 72" (3.02m x 2.74m)

Double glazed to rear aspect, low-level flush w/c, wash hand basin in vanity unit with mixer tap, walk-in shower, tiled floor, extractor, spotlights.

FRONT BEDROOM 10' 87" x 10' 97" (5.26m x 5.51m)

Double-glazed window to the front aspect, wood floor, spotlights.

EN-SUITE 8' 66" x 3' 67" (4.11m x 2.62m)

Double glazed window to the side aspect, low-level flush w/c, wash hand basin in vanity unit with mixer tap, walk-in shower, heated towel rail, tiled floor, extractor.

SECOND FLOOR LANDING 5' 07" x 2' 89" (1.70m x 2.87m)

Wood floor, Velux opening window, spotlights.

SECOND FLOOR BEDROOM 10' 03" x 63' 00" (3.12m x 19.20m)

(10'03 X 8'63) X (8'09 > 3'35 X 3'44 < 9'40) Storage cupboard into eaves, wood floor, spotlights, double glazed window to the rear aspect.

STORAGE CUPBOARD 9' 00" x 5' 95" (2.74m x 3.94m)

Wood floor, lighting.

EN-SUITE 6' 25" x 6' 19" (2.46m x 2.31m)

Double glazed window to the rear aspect, walk-in shower, low-level flush w/c, heated towel rail, wash hand basin with mixer tap in vanity unit, tiled floor, spotlights, extractor.

SECOND FLOOR BEDROOM 19' 01" x 8' 66" (5.82m x 4.11m)

Double glazed window to the rear aspect, wood floor, spotlights, storage in eaves.

STORAGE CUPBOARD

Wood flooring, lights.

EN-SUITE 6' 10" x 6' 17" (2.08m x 2.26m)

Double glazed window to the side aspect, wash hand basin with mixer tap & vanity unit, low-level flush w/c, walk-in shower, tiled floor.

Mantlestates

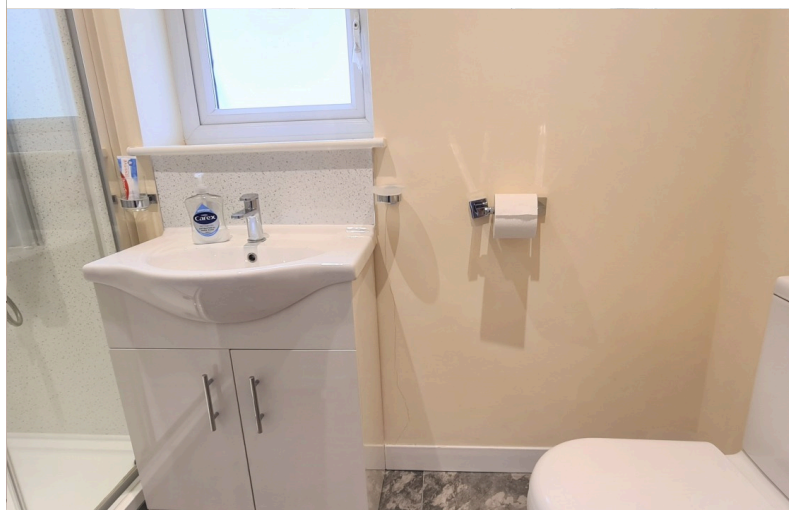
2A Church Hill Road, East Barnet, EN4 8TB

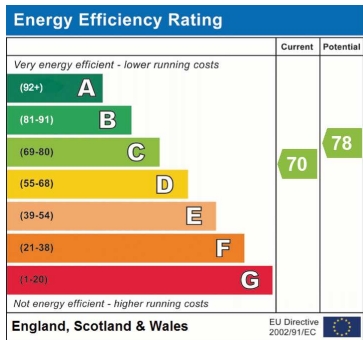
office@mantlestates.com | 0208 275 1555

Website: <https://mantlestates.com/>



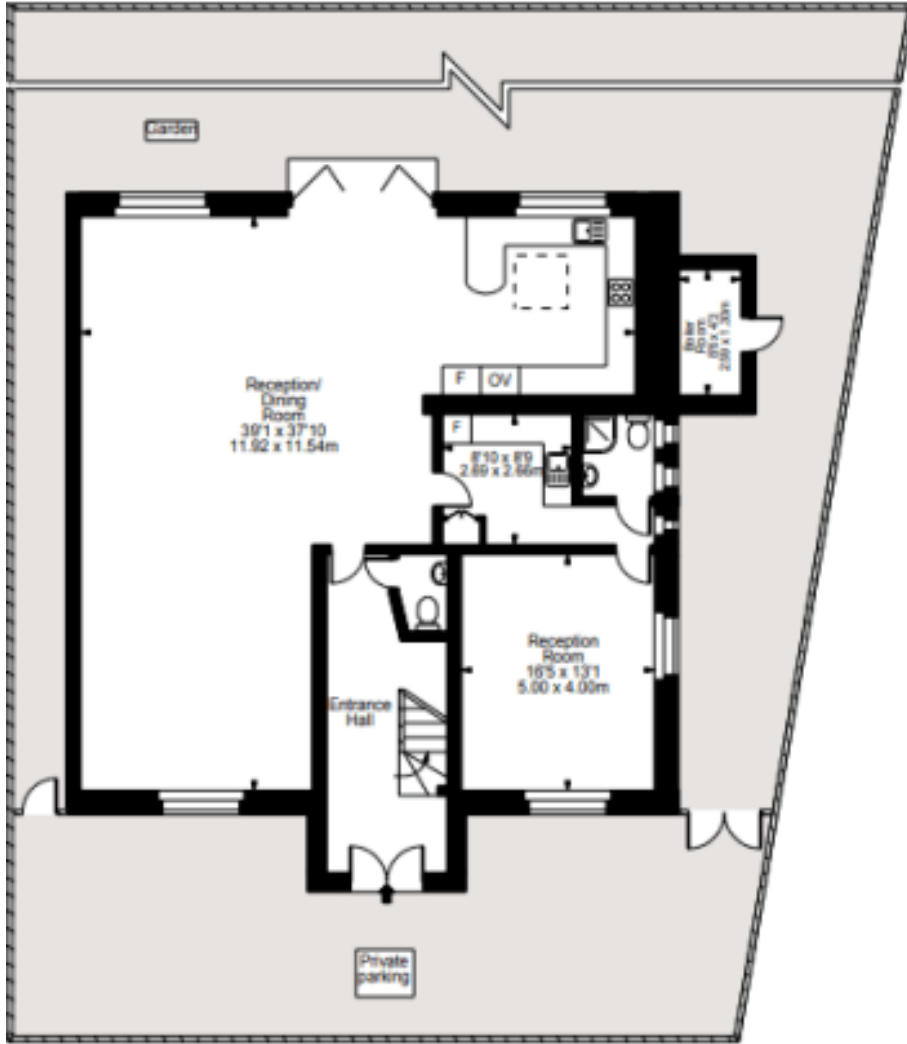




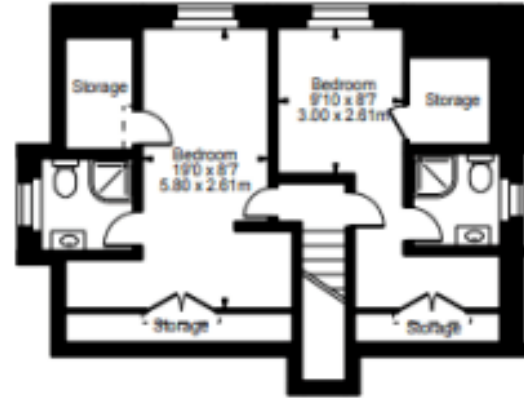


Address: Claremont Road, Barnet, EN4

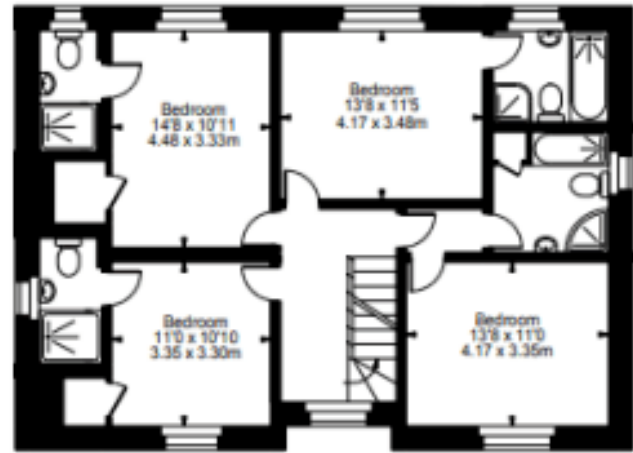
Claremont Road



Ground Floor



Second Floor



First Floor

Approx Gross Internal Area 3200 Sq Ft - 297.28 Sq M

FOR ILLUSTRATIVE PURPOSES ONLY. NOT TO SCALE.

While every attempt has been made to ensure the accuracy of the floorplan shown, all measurements, positioning, fixtures, fittings and any other data shown are an approximate indication for illustrative purposes only and are not to scale. No responsibility is taken for any error, omission, mis-statement or use of data shown. Floor plan by www.bestangle.co.uk