



18 Grebe Square

Upper Rissington, Gloucestershire, GL54 2NH

Guide Price £250,000



A two double bedroom terraced house located within walking distance of local amenities, ideal for investors or a first time buyer.

Accommodation comprises entrance, sitting room, kitchen/breakfast room, two bedrooms, bathroom, gardens to front and rear and an off road parking space.

- **EPC: D**
- **Council Tax: B**
- **Tenure: Freehold**

Upper Rissington occupies an elevated location between the Windrush and Evenlode Valleys and offers easy access to the A424 Stow on the Wold/Burford road as well as Bourton on the Water. Upper Rissington has a fantastic new shop, pharmacy, gym and cafe as well as a brand new village hall. There is also the **OUTSTANDING** Rissington Primary School. Further facilities and schools can be found in both Bourton on the Water, Stow on the Wold and Burford. A bus service links the village to the local schools at Bourton on the Water, as well as wider destinations.





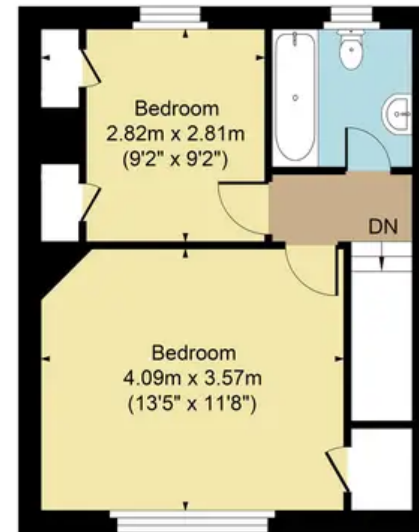
18 Grebe Square, Upper Rissington, GL54 2NH

Main House Approx. Gross Internal Area:- 64.18 sq.m. 691 sq.ft.

Total Approx. Gross Area:- 64.18 sq.m. 691 sq.ft.



Ground Floor



First Floor

FOR ILLUSTRATIVE PURPOSES ONLY-NOT TO SCALE
The position & size of doors, windows, appliances and other features are approximate only.
□ □ □ Denotes restricted head height
www.dmlphotography.co.uk