





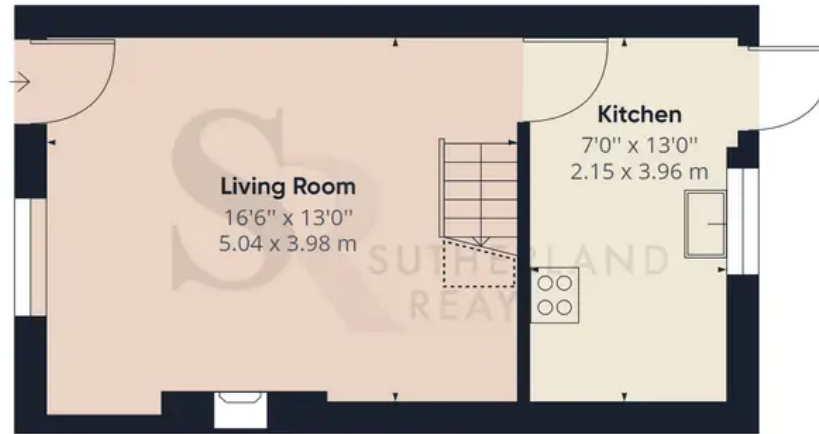
29 Glossop Road

Little Hayfield, High Peak

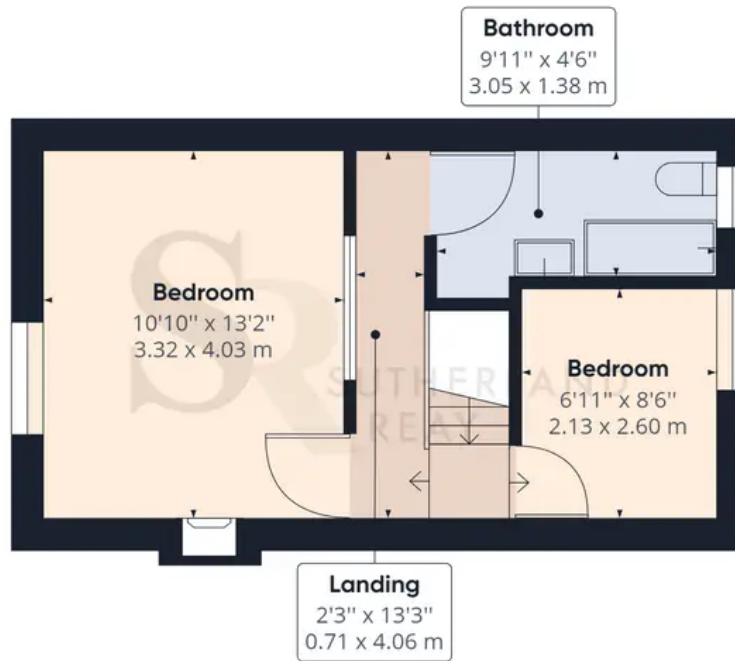
Tenure: Leasehold

- Leasehold
- Two Bedroom Terraced Cottage
- Beautifully Presented
- Spacious Living Room With Contemporary Electric Fire
- Country Style Kitchen
- Family Bathroom
- Gas Central Heating
- EPC Rating TBC





Floor 0



Floor 1

Approximate total area⁽¹⁾

615.09 ft²

57.14 m²

Reduced headroom

10.58 ft²

0.98 m²

(1) Excluding balconies and terraces

 Reduced headroom
(below 1.5m/4.92ft)

While every attempt has been made to ensure accuracy, all measurements are approximate, not to scale. This floor plan is for illustrative purposes only.

GIRAFFE360

AWARD WINNING ESTATE
& LETTING AGENTS



SCAN THE QR CODE
FOR MORE DETAILS
OR BOOK A VIEWING

