



 3

Bedrooms

 1

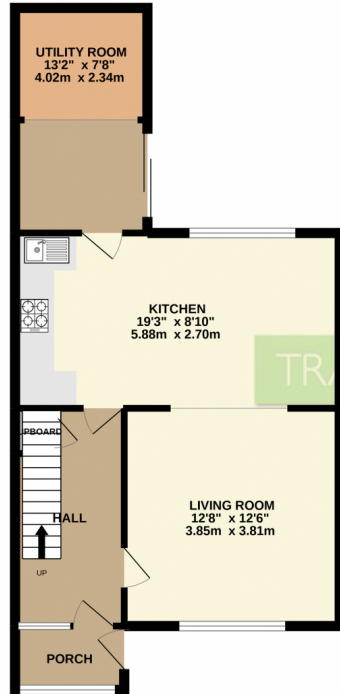
Bathroom





TRADING PLACES ESTATE AGENTS are delighted to offer for sale this well appointed three bedroom mid terrace town house in move in condition WITH NO ONWARD CHAIN. In brief the accommodation comprises, Entrance Porch, entrance hallway with tiled floor, lounge, modern fitted dining kitchen with tiled flooring, utility room with patio doors opening out to the rear garden, whilst to the first floor there is a shaped landing, three bedrooms & contemporary fitted three piece bathroom suite. The property is uPVC double glazed & warmed by gas central heating. Externally to the front there is a generous paved driveway providing off road parking for several cars. To the rear it is mainly lawned, paved patio and a brick built garden store. Ideal for First Time Buyers.

GROUND FLOOR
553 sq.ft. (51.4 sq.m.) approx.



1ST FLOOR
452 sq.ft. (42.0 sq.m.) approx.



TRADING PLACES

TOTAL FLOOR AREA - 1005 sq.ft. (93.4 sq.m.) approx.

Whilst every attempt has been made to ensure the accuracy of the floorplan contained here, measurements of doors, windows, rooms and any other items are approximate and no responsibility is taken for any error, omission or mis-statement. This plan is for illustrative purposes only and should be used as such by any prospective purchaser. The services, systems and appliances shown have not been tested and no guarantee as to their operability or efficiency can be given.
Made with Metropix ©2022.

