



MILE



Park House, Manor Park Road £600,000 Leasehold

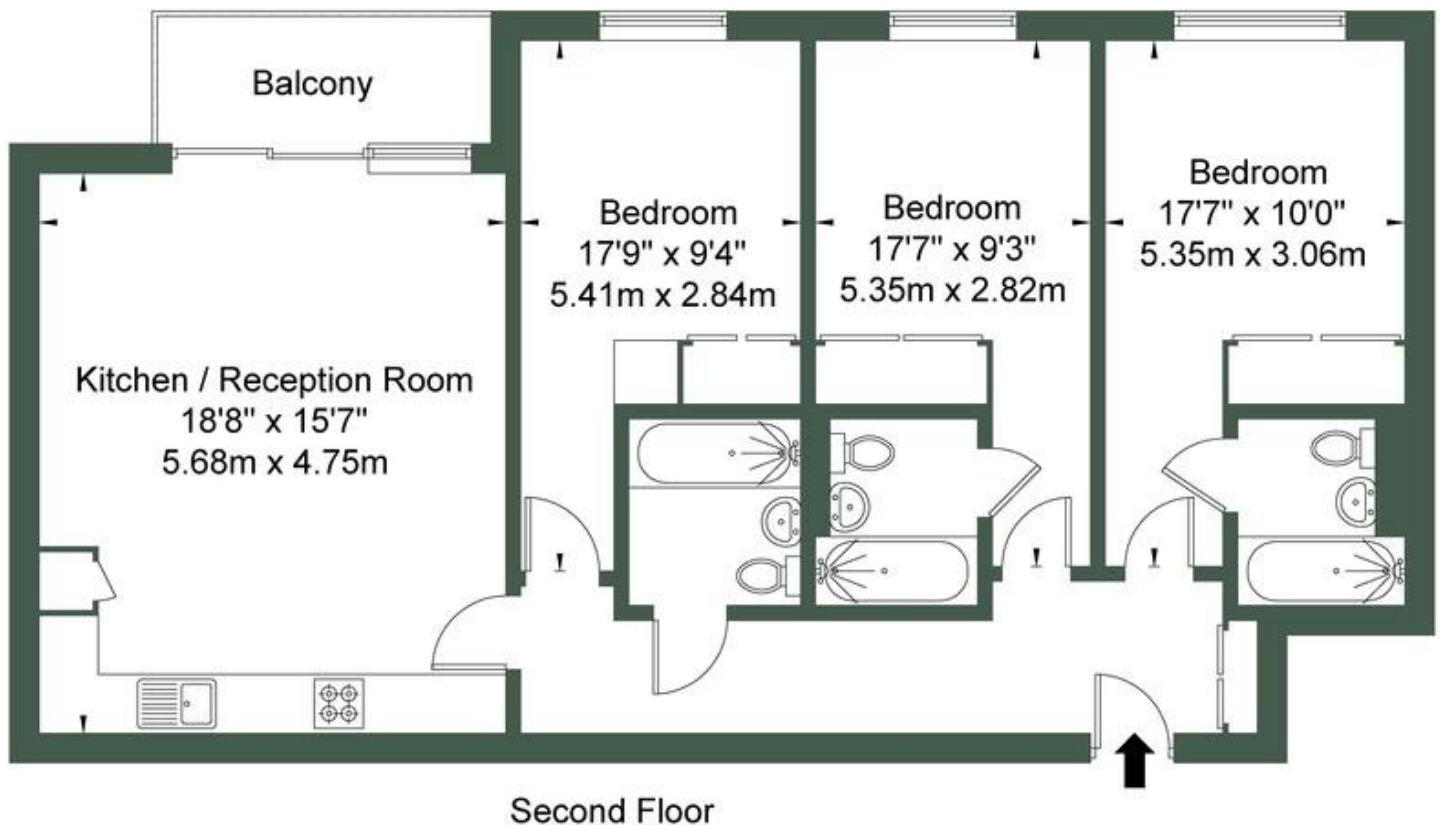
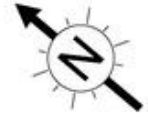
Mile are delighted to bring to the market this stunning three bedroom three bathroom modern apartment in a secure residential building.

With almost 1000 sq ft of living space, this remarkable three bedroom three bathroom apartment with two en-suites has been benevolently crafted with entertainment space and bedroom size in mind. The property also benefits from a large open plan kitchen living area with a fully fitted kitchen and a high spec bathroom. Park House delivers extraordinary levels of affordable luxury living in a Central London area.

- Stunning
- Spacious
- Three double bedrooms
- Three Bathrooms
- 999 year lease/Chain free
- Secure residential building
- Just under 1000 sq ft
- Private Balcony
- Communal Garden
- Close to shops and transport links

Park House Manor Park Road NW10 4JW

Approx Gross Internal Area = 89.4 sq m / 962 sq ft



Ref

Copyright



The Floor plan is not to scale and measurements and areas shown are approximate and therefore should be used for illustrative purposes only. The plan has been prepared in accordance with the RICS code of Measuring Practice and whilst we have confidence in the information produced it must not be relied on. If there is any aspect of particular importance, you should

MONEY LAUNDERING REGULATIONS 2003: Intending purchasers will be asked to produce identification documentation at a later stage and we would ask for your co-operation in order that there will be no delay in agreeing the sale.

General: While we endeavour to make our sales particulars fair, accurate and reliable, they are only a general guide to the property and, accordingly, if there is any point which is of particular importance to you, please contact the office and we will be pleased to check the position for you, especially if you are contemplating travelling some distance to view the property.

Measurements: These approximate room sizes are only intended as general guidance. You must verify the dimensions carefully before ordering carpets or any built-in furniture.

Services: Please note we have not tested the services or any of the equipment or appliances in this property, accordingly we strongly advise prospective buyers to commission their own survey or service reports before finalising their offer to purchase.