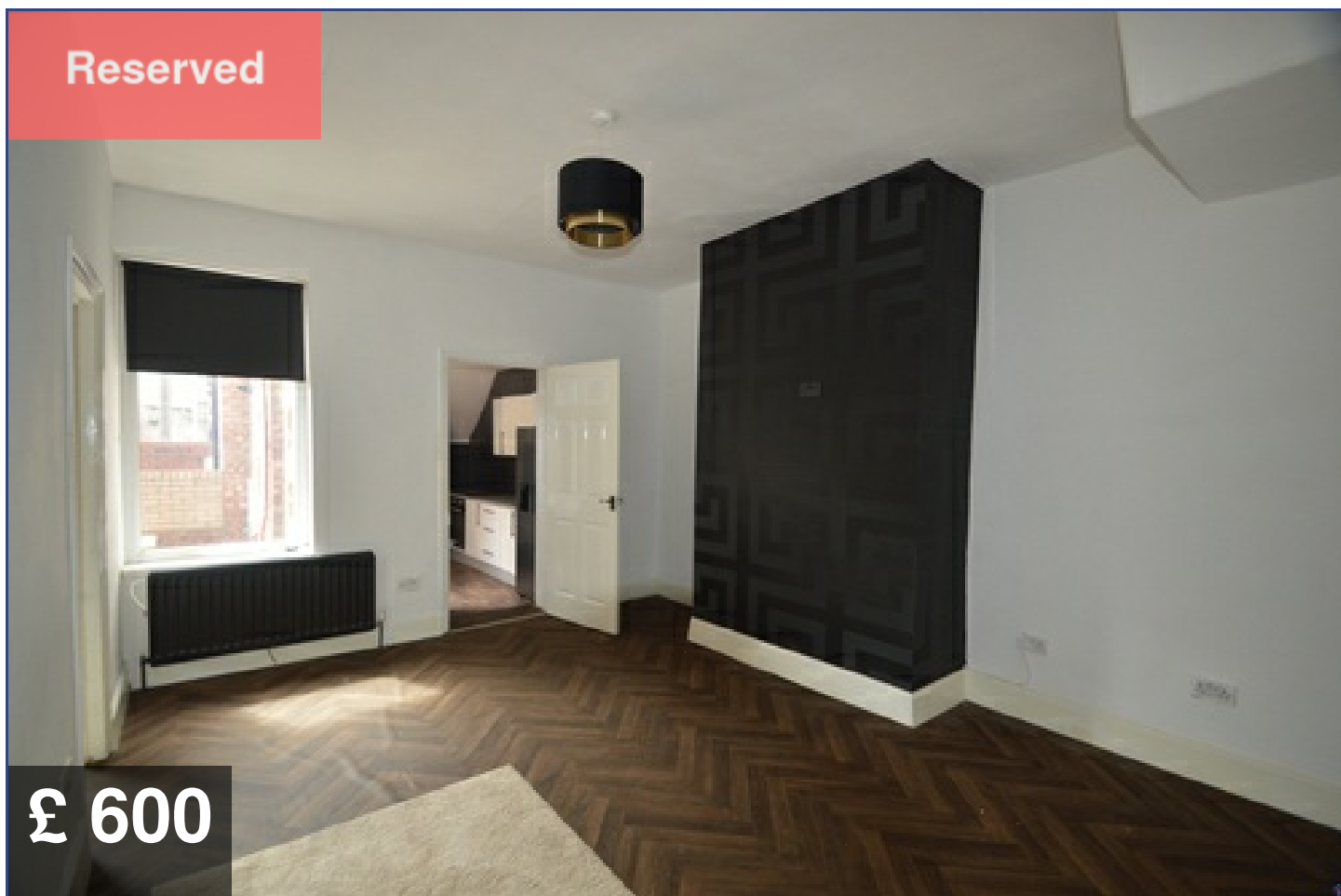




SEALPROPERTIES
RENTAL MARKET SPECIALISTS

**144 Westbourne Avenue
Gateshead
NE8 4NQ**



2 Bedroom Ground Floor Flat available

Beds : 2

Bath : 1

Parking : On Street



0191 580 5900



WWW.SEALPROPERTIES.CO.UK



INFO@SEALPROPERTIES.CO.UK

Contact Us

Agent Information

Emma

0191 5805900

emma@sealproperties.co.uk

167/169 Saltwell Road

Gateshead, NE8 4TJ

sealproperties.co.uk



Scan Me

Scan Me For Property Details



Quote Me

**Quote This Reference Number For
More Information**

SP23060820

Disclaimer

Whilst every effort is made to ensure the contents of this brochure are accurate and true, the particulars are set out as a general outline for guidance purposes only and do not constitute any part of an offer or contract. Interested Parties should not rely on them as statements of representation of fact, but instead must satisfy themselves by inspection or otherwise as to their accuracy.

A Holding Fee equivalent to one week's rent is payable. Please contact the office for more details.

Energy Performance Certificate (EPC) information is available upon request. Please contact the office.

Gallery



Description

SEAL Properties will be bringing to the rental market a 2 bedroom ground floor flat. This property briefly comprises of 2 bedrooms, living room, kitchen and bathroom. Close to shops and local transport. We recommend to view promptly due to an expectation of high interest in the property.

Specification

Entrance Hallway

Entrance hallway is neutrally decorated with lino flooring.

Lounge

A large living space with lino flooring and plenty space for table, and seating.

Kitchen

Compact kitchen with a variety of units, laminate worktops. modern decor with lino flooring and American style fridge.

Bedroom One

Spacious double bedroom with carpet flooring. Plenty room for a desk and a wardrobe/cupboard for storage.

Bedroom Two

Small singular bedroom with large window to let natural light in. Could also be used as an office room.

Bathroom

Functional bathroom with bath tub and shower unit.