



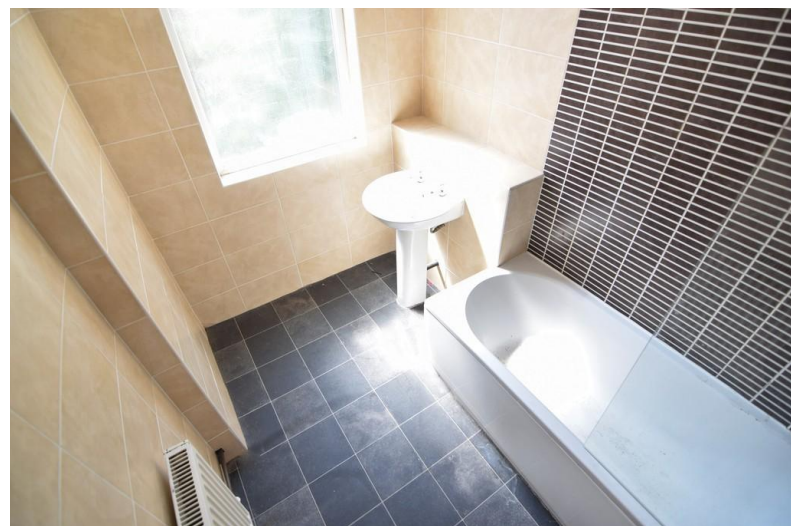
Flat 2, Park Road, Blackpool

Lancashire, FY1 4JF

- **LARGE 3 BEDROOM MAISONETTE**
- **ACCOMMODATION OVER 2 FLOORS**
- **GAS CENTRAL HEATING**
- **DOUBLE GLAZING**

£700 pcm

EPC Rating '72'



Flat 2, Park Road, First Floor Flat, Blackpool, FY1 4JF

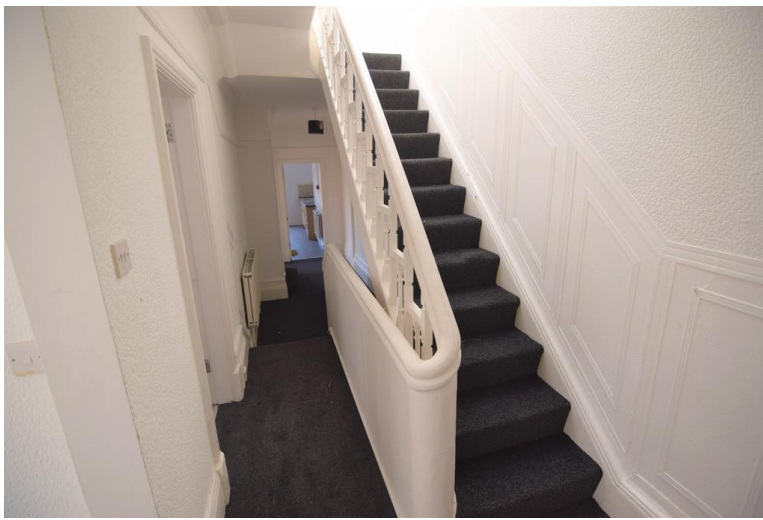


Property Description

Very spacious three bedroom first floor maisonette offering accommodation over two floors. Situated in a popular and convenient location close to transport links, town centre, shops and schools.

Accommodation comprising entrance hallway with stairs to first floor, lounge, bedroom 1, kitchen, bathroom with separate wc, stairs to the second floor, bedroom 2 and bedroom 3. The property also benefits from gas central heating and double glazing.

Available now. 1 months rent in advance and 5 weeks rent as deposit.



- LOUNGE
13' 81" x 13' 63" (6.02m x 5.56m)
- BEDROOM 1
13' 38" x 13' 72" (4.93m x 5.79m)
- KITCHEN
14' 46" x 11' 01" (5.44m x 3.38m)
- BATHROOM
8' 34" x 5' 58" (3.3m x 3m)
- BEDROOM 2
19' 68" x 8' 55" (7.52m x 3.84m)
- BEDROOM 3
11' 52" x 11' 03" (4.67m x 3.43m)

