



83 Park Road

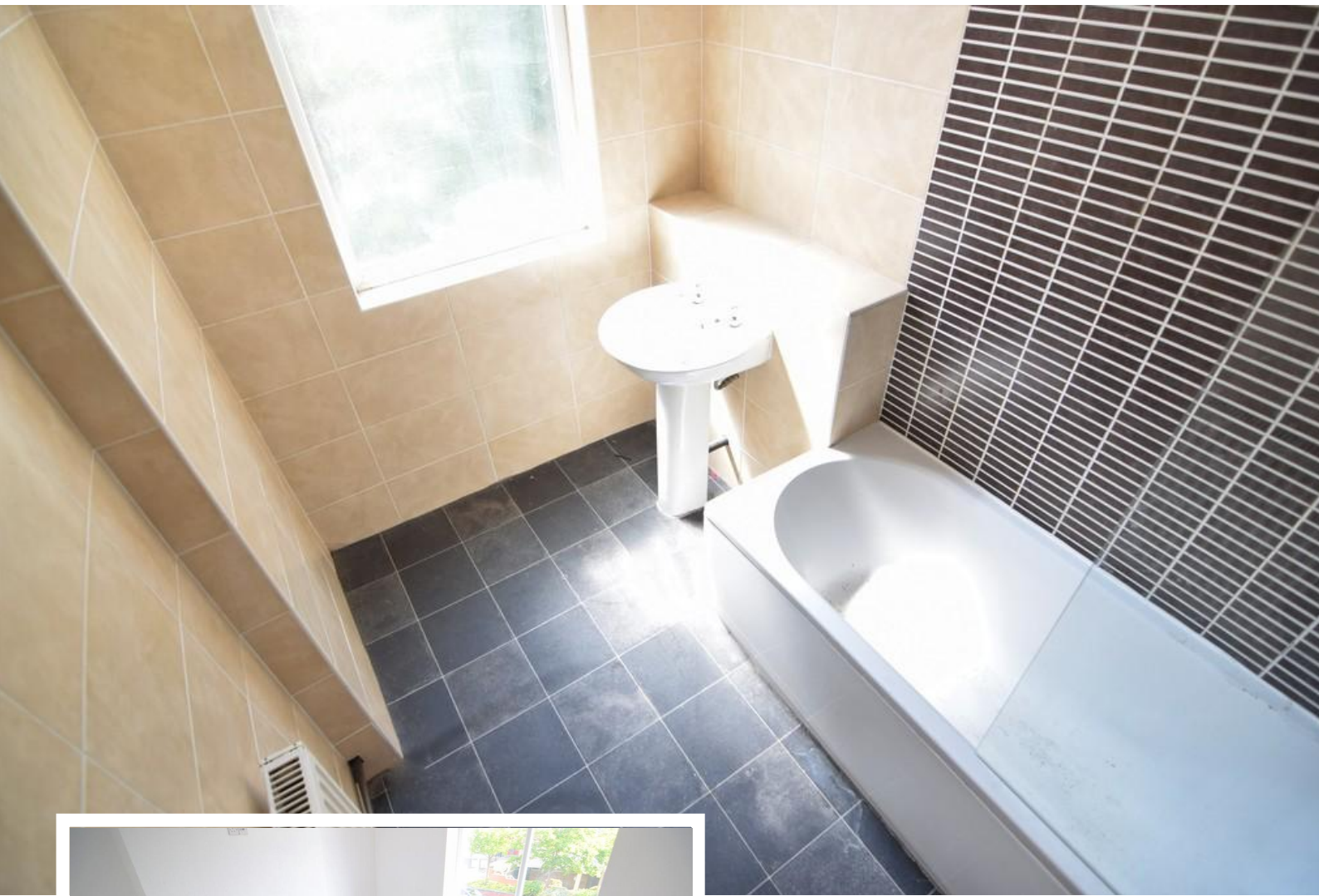
Blackpool, FY1 4JF

- **LARGE 3 BEDROOM MAISONETTE**
- **ACCOMMODATION OVER 2 FLOORS**
- **GAS CENTRAL HEATING + DOUBLE GLAZING**
- **MOVE IN COSTS £1615.38**

£750 pcm

EPC Rating '58'





Property Description

Very spacious three bedroom first floor maisonette offering accommodation over two floors. Situated in a popular and convenient location close to transport links, town centre, shops and schools.

Accommodation comprising entrance hallway with stairs to first floor, lounge, bedroom 1, kitchen, bathroom with separate wc, stairs to the second floor, bedroom 2 and bedroom 3. The property also benefits from gas central heating and double glazing.

Available now. 1 months rent in advance and 5 weeks rent as deposit. Gas charge also payable monthly of £89.



LOUNGE

13' 81" x 13' 63" (6.02m x 5.56m)

BEDROOM 1

13' 38" x 13' 72" (4.93m x 5.79m)

KITCHEN

14' 46" x 11' 01" (5.44m x 3.38m)

BATHROOM

8' 34" x 5' 58" (3.3m x 3m)


BEDROOM 2

19' 68" x 8' 55" (7.52m x 3.84m)

BEDROOM 3

11' 52" x 11' 03" (4.67m x 3.43m)



Energy Efficiency Rating		
	Current	Potential
<i>Very energy efficient - lower running costs</i>		
(92-100) A		
(81-91) B		
(69-80) C		
(55-68) D	←	→
(39-54) E	←	→
(21-38) F		
(1-20) G		
<i>Not energy efficient - higher running costs</i>		
England, Scotland & Wales		EU Directive 2002/91/EC 

21 Counce Street
 Blackpool
 Lancashire
 FY1 3LA

www.moveholmes.co.uk
 01253 928200
enquiries@moveholmes.co.uk

Agents Note: Whilst every care has been taken to prepare these sales particulars, they are for guidance purposes only. All measurements are approximate and are for general guidance purposes only and whilst every care has been taken to ensure their accuracy, they should not be relied upon and potential buyers are advised to recheck the measurements