





Property Summary

SOLD BY MARK BEAUMONT ESTATE AGENTS SE13. Marsala Road is a very popular road which is between Ladywell Village and Lewisham main station. This Victorian house is in need of modernisation, but it is clean and able to move into. 3 good sized bedrooms, through lounge, big kitchen. Private garden. Double-glazing. No chain. #AskBeaumont

Property Features

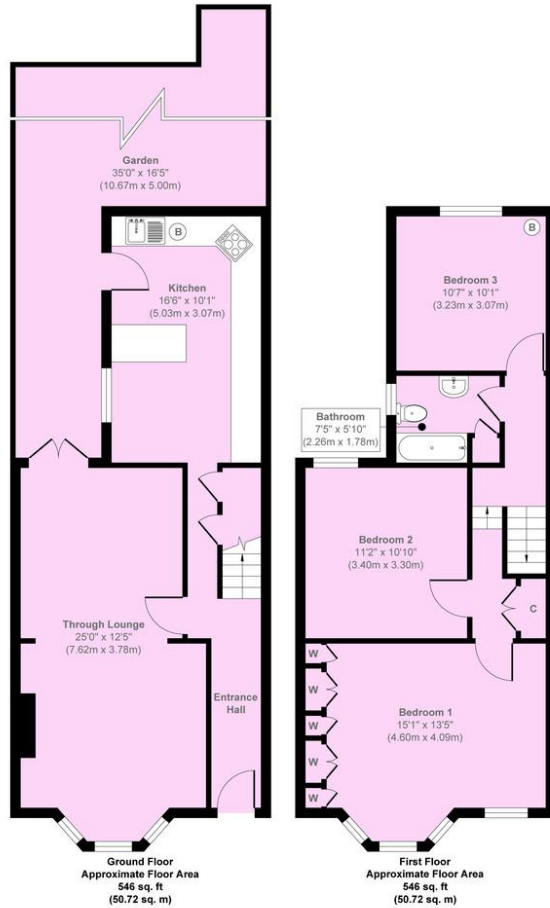
- VICTORIAN HOUSE
- THREE BEDROOMS
- THROUGH LOUNGE 25'1 x 12'5
- KITCHEN 16'6 x 10'1
- UPSTAIRS BATHROOM
- PRIVATE GARDEN
- BETWEEN LADYWELL & LEWISHAM STNs
- CLEAN CONDITION
- NO CHAIN
- IN NEED OF UPGRADING





Marsala Road

Mark Beaumont
markbeaumont.com



Approx. Gross Internal Floor Area 1092 sq. ft / 101.44 sq. m

Illustration for identification purposes only, measurements are approximate, not to scale.
Copyright © markbeaumont.com
Produced by Elements Property