



63a Castle Road, Southsea

Offers in Region of £240,000

 **chinneckshaw**



63a Castle Road

Southsea

Welcome to this stunning two bedroom first floor apartment, nestled on the vibrant Castle Road in the heart of Southsea. This spacious apartment offers you a stylish and modern living space, quite often hard to find in this price range.

You are greeted with a welcoming split level hallway which leads you to the Lounge. With it's large bay window and plantation style shutter blinds this room is a great place to relax in. Next you'll find a sleek and contemporary fitted kitchen, thoughtfully designed and executed with everything you need.

There are two bedrooms, both an excellent size but our favourite has to be the principle bedroom which is simply huge! Better still, it offers you an ensuite bathroom next door plus a fitted wardrobe. The second bedroom could easily be used as a guest room or as an office for those of you who work from home?

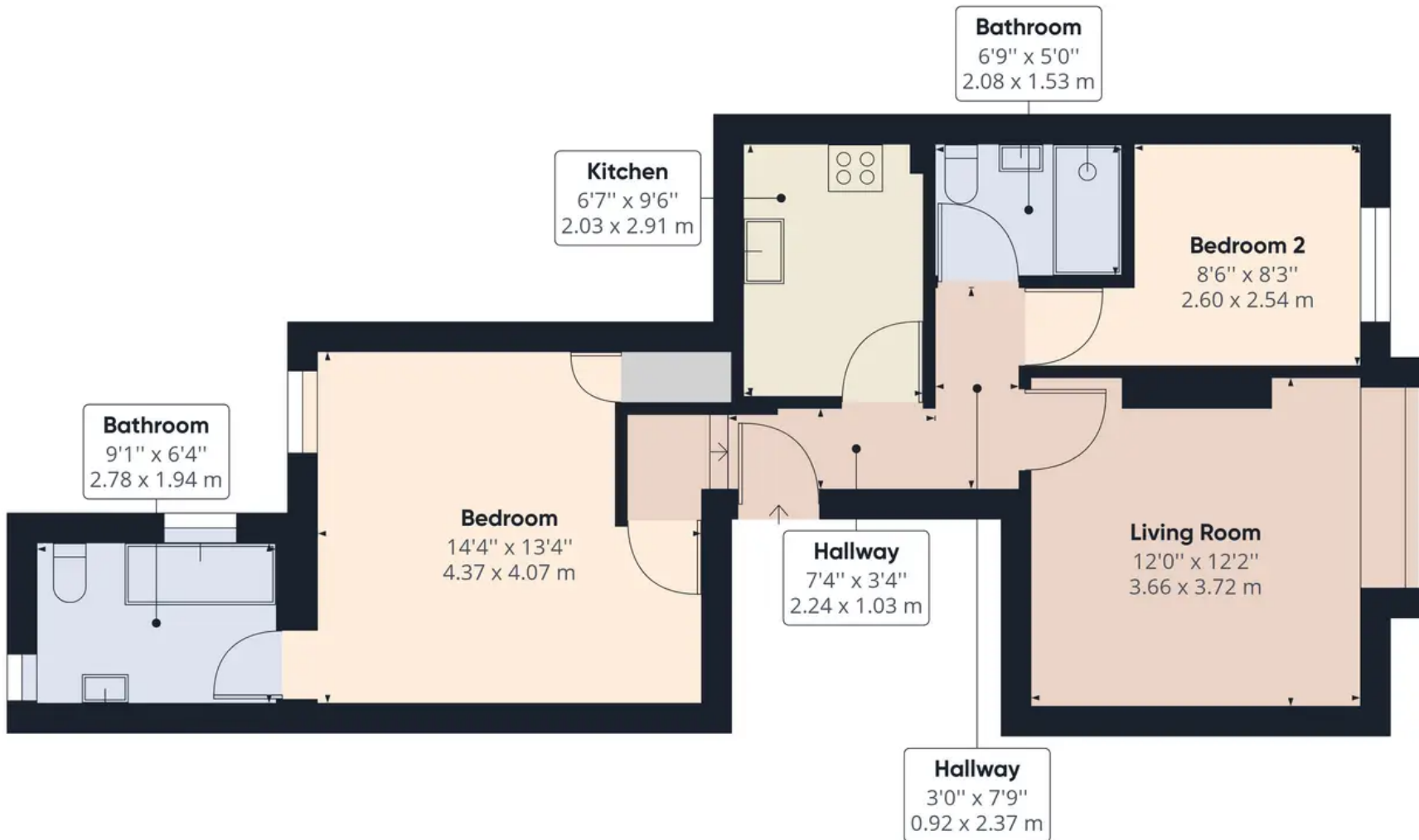
Last but not least there is a separate shower room which, like the rest of this home has tasteful finishes and meticulous attention to detail.

Situated on Castle Road, you will find yourself immersed in the vibrant atmosphere of Southsea, with an array of cafes, pubs and restaurants. The proximity to local amenities and excellent transport links ensures a convenient and connected lifestyle.

All in all we think this lovely flat would make a great first time purchase for those of you looking for a taste of the Southsea lifestyle.

Tenure: Leasehold



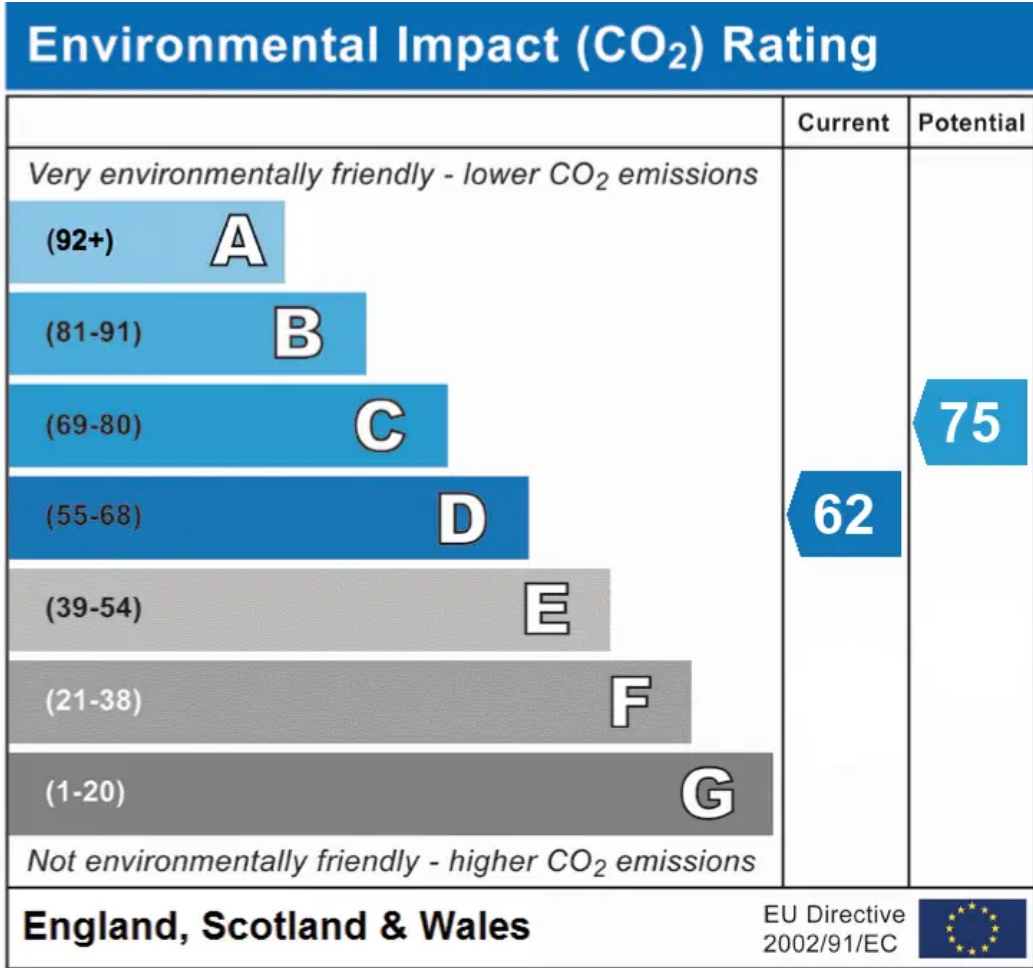
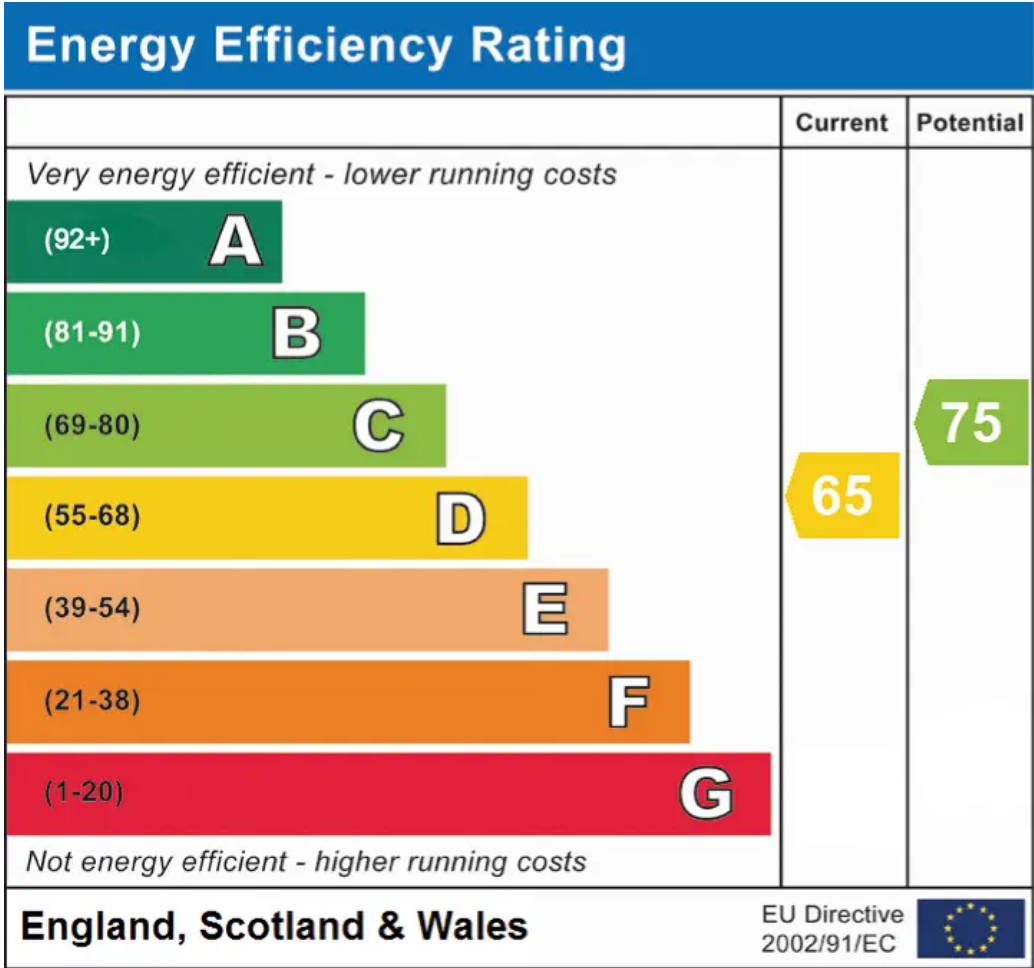


Approximate total area⁽¹⁾
642.61 ft²
59.70 m²

(1) Excluding balconies and terraces

While every attempt has been made to ensure accuracy, all measurements are approximate, not to scale. This floor plan is for illustrative purposes only.

GIRAFFE 360



Chinneck Shaw

Bridge House, Milton Road, Portsmouth – PO3 6AN

023 9282 6731

hello@chinneckshaw.co.uk

www.chinneckshaw.co.uk/

Chinneck Shaw, Bridge House, Milton Road, PO3 6AN Consumer Protection from Unfair Trading Regulations 2008: These details are for guidance only and complete accuracy cannot be guaranteed. If there is any point which is of particular importance, verification should be obtained. The do not constitute a contract or part of a contract. All measurements are approximate. No guarantee can be given with regard to planning permissions or fitness for purpose. No apparatus, equipment, fixture or fitting has been tested. Items shown in the photographs are NOT necessarily included. Interested Parties are advised to check availability and make an appointment to view before travelling to see a property.