



Tower Street, Covent Garden, WC2H
£700 pw

> 1 Bedroom > 1 Bathroom > Unfurnished

TAVISTOCKBOW
RESIDENTIAL



- > One bedroom
- > One bedroom
- > First & Second floor
- > Newly refurbished
- > Wooden floors throughout
- > Unfurnished
- > Air conditioning
- > Built in storage
- > Close to Covent Garden & Leicester Square tube stations
- > Available immediately

An immaculately designed split level apartment located in the heart of the Seven Dials area of Covent Garden. This brand new apartment offers a bright and spacious open plan living space on the first floor. The second floor double bedroom has built in storage and plush new carpet. The kitchen is fitted with Samsung appliances and the

bathroom is beautifully designed, with separate shower and stand alone bath tub. Available immediately on an unfurnished basis.

Council tax band TBC.





WHAT WE LOVE

Tucked away in Tower court so is very quiet
Bespoke Samsung kitchen
Beautiful parquet flooring
Beautiful stand alone bath
Moments from Seven Dials market.

WHAT YOU NEED TO KNOW

First and second floor (no lift)
Shared outside space to the front
Security gate entrance
3 minutes walk from Covent Garden tube
Air conditioning.



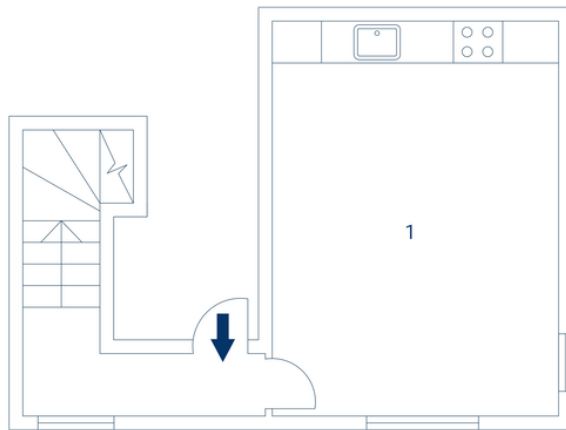
Floorplan

Tower Court, WC2H

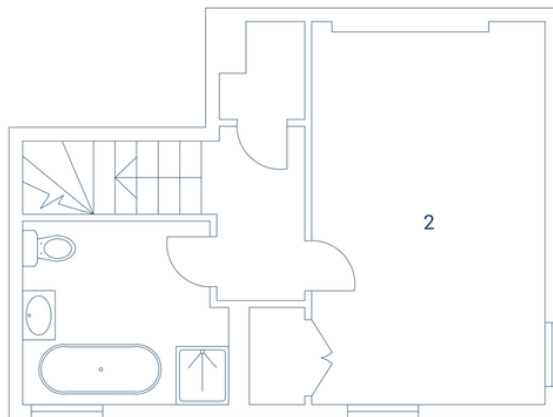
Approximate Gross Internal Area 44 sq m / 473 sq ft

1 Living /
Kitchen /
Dining
3.46 x 4.63M
11'3" x 15'1"

2 Bedroom
3.29 x 4.51M
10'7" x 14'7"



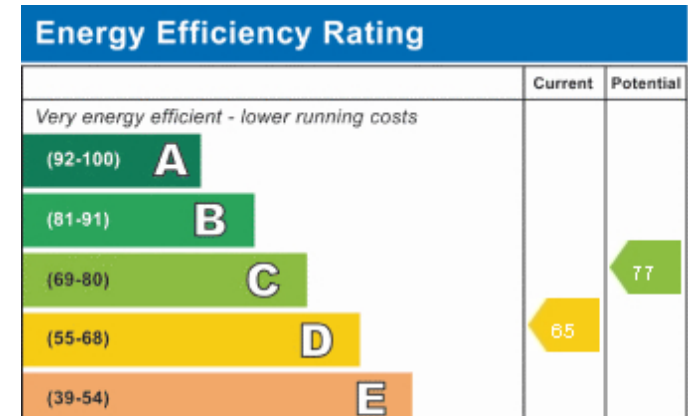
First Floor



Second Floor

Floorplan produced for Tavistock Bow. Illustration for identification purposes


EPC





About Us

Tavistock Bow is an independent residential agency based in Covent Garden. We are niche, boutique, creative, knowledgeable, professional and approachable. We love what we do and that's why we do it.

Contact Us

- a.** 21 New Row, Covent Garden, WC2N 4LE
 - t.** 020 7477 2177
 - e.** hello@tavistockbow.com
 - w.** tavistockbow.com
-  /tavistockbow

 /tavistockbow

 @tavistockbow



TAVISTOCKBOW
RESIDENTIAL