



MILE



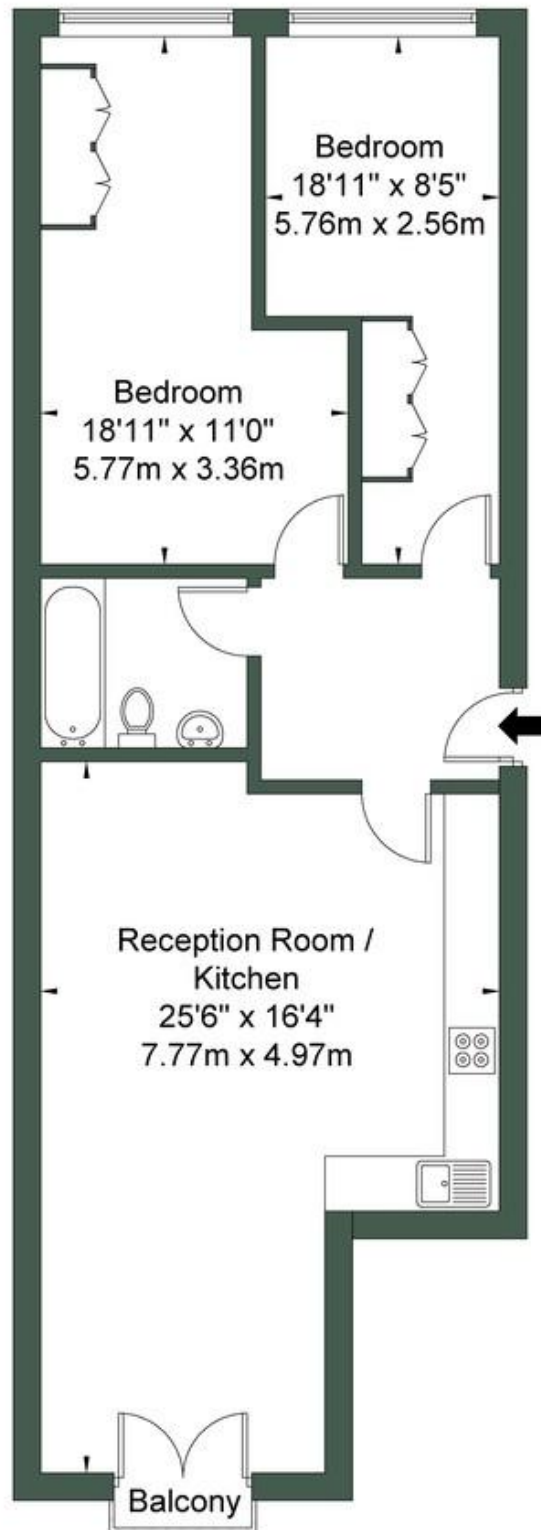
Harlesden Road, London NW10 £595,000 Leasehold

Mile are pleased to bring to market this stunning two year old apartment on this quiet residential road with communal garden. Set on the first floor of this two year old development, this beautiful home offers generous living across 783 sq ft. Comprising of two double bedrooms (both with built in storage), a great modern bathroom, and superb 25 ft open plan kitchen area, with views of the garden. Everything you see is just two years old and ready to move in! Benefiting from a long lease (123 years), off street parking, and a stunning communal garden.

- First floor apartment
- Two double bedrooms
- Communal garden
- Long lease (123 years)
- Excellent condition
- Off-street parking
- 783 sq ft
- Walking distance from open green space of Roundwood Park
- Quiet residential road
- Close to shops and transport

Harlesden Road NW10 3RX

Approx Gross Internal Area = 72.8 sq m / 783 sq ft



First Floor

Ref

Copyright

M MILE

The Floor plan is not to scale and measurements and areas shown are approximate and therefore should be used for illustrative purposes only. The plan has been prepared in accordance with the RICS code of Measuring Practice and whilst we have confidence in the information produced it must not be relied on. If there is any aspect of particular importance, you should

MONEY LAUNDERING REGULATIONS 2003: Intending purchasers will be asked to produce identification documentation at a later stage and we would ask for your co-operation in order that there will be no delay in agreeing the sale.

General: While we endeavour to make our sales particulars fair, accurate and reliable, they are only a general guide to the property and, accordingly, if there is any point which is of particular importance to you, please contact the office and we will be pleased to check the position for you, especially if you are contemplating travelling some distance to view the property.

Measurements: These approximate room sizes are only intended as general guidance. You must verify the dimensions carefully before ordering carpets or any built-in furniture.

Services: Please note we have not tested the services or any of the equipment or appliances in this property, accordingly we strongly advise prospective buyers to commission their own survey or service reports before finalising their offer to purchase.