



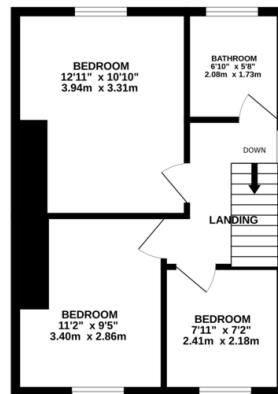
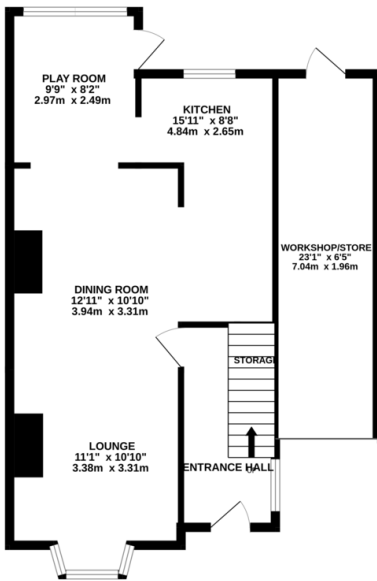
Property Summary

Modernised and much improved semi detached home for sale in Glen Parva which would ideally suit a family or first time buyer. The accommodation comprises entrance hall, lounge, dining room, play room, kitchen, three bedrooms, bathroom, workshop/store, pleasant rear garden and ample off road parking. This is a real must see so call and book your viewing today!



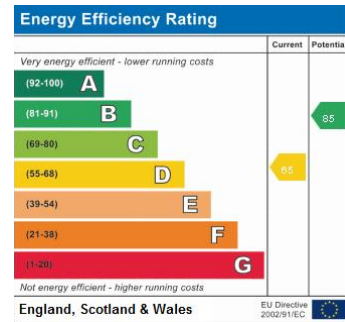
GROUND FLOOR
671 sq.ft. (62.3 sq.m.) approx.

1ST FLOOR
384 sq.ft. (35.6 sq.m.) approx.



TOTAL FLOOR AREA: 1055 sq.ft. (98.0 sq.m.) approx.

Whilst every attempt has been made to ensure the accuracy of the floorplan contained here, measurements of doors, windows, rooms and any other items are approximate and no responsibility is taken for any error, omission or mis-statement. This plan is for illustrative purposes only and should be used as such by any prospective purchaser. The services, systems and appliances shown have not been tested and no guarantee as to their operability or efficiency can be given.
Made with Measure ©2023



- Semi Detached
- Modernised Throughout
- Three Bedrooms
- Ample Off Road Parking
- Workshop/Store
- Open Plan Living
- Play Room
- Pleasant Rear Garden

phillips george | sales & lettings

Agents Note: Whilst every care has been taken to prepare these sales particulars, they are for guidance purposes only. All measurements are approximate and for general guidance purposes only and whilst every care has been taken to ensure their accuracy, they should not be relied upon and potential buyers are advised to recheck the measurements

46 Long Street, Wigston, Leicestershire, LE18 2AH

info@phillipsgeorge.co.uk
0116 216 8178

