



24 Whiteside Court

Bathgate, West Lothian, EH48 2TN

kw SCOTLAND
KELLERWILLIAMS®



kw

Property Summary

Part of a sought-after development, this spacious first-floor flat is an attractive two-bedroom, two-bathroom residence that is well-presented throughout in light hues. It offers a sociable open-plan reception area, which includes a well-appointed kitchen and a Juliet balcony with lovely leafy views. It also has allocated parking and a lawned communal garden. Furthermore, the property benefits from a delightful setting in Bathgate, close to open countryside, yet still within easy reach of the town's amenities, schools, and transport links.

Extras: all fitted floor and window coverings, light fittings, integrated kitchen appliances, an undercounter fridge, and a washing machine to be included in the sale.



Features

- A bright and spacious first-floor flat
- Part of a popular development
- Desirable setting in Bathgate
- Lightly decorated interiors
- Secure entry system
- Central hall with built-in storage
- Open-plan kitchen/living/dining room (with Juliet balcony to let the outside in)
- Two double bedrooms with wardrobes
- Modern en-suite shower room
- Quality three-piece family bathroom
- Well-kept communal garden
- Allocated residents' parking
- Gas central heating and double glazing
- EPC Rating - B



kw

“A bright and spacious first-floor flat in a desirable setting in Bathgate”







kw

“Two double bedrooms with wardrobes, a modern en-suite shower room, and a quality three-piece family bathroom”

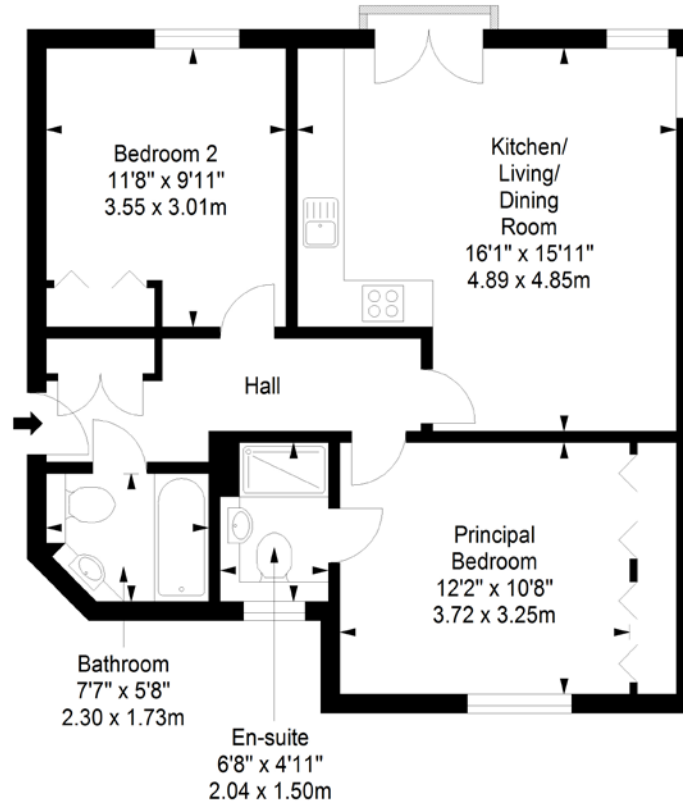






Floorplan

First Floor
Approx. 63.3 sq. metres (681.4 sq. feet)



Total area: approx. 63.3 sq. metres (681.4 sq. feet)

DISCLAIMER: These particulars are intended to give a fair description of the property but their accuracy cannot be guaranteed, and they do not constitute or form part of an offer of contract. Intending purchasers must rely on their own inspection of the property. None of the above appliances/services have been tested by ourselves. We recommend purchasers arrange for a qualified person to check all appliances/services before legal commitment. Whilst every attempt has been made to ensure the accuracy of the floorplan contained here, measurements of doors, windows, rooms and any other items are approximate and no responsibility is taken for any error, omission, or misstatement. This plan is for illustrative purposes only and should be used as such by any prospective purchaser.