



8 Loyd Lindsay Square, Winchester
Winchester

£280,000
DYBLES





8 Loyd Lindsay Square

Winchester, Winchester

Dybles present this stylish two bedroom, ground floor apartment. Teg Down is a popular residential area located to the north-west of Winchester. It enjoys superb school catchments and a good bus service and is within a short stroll of a Waitrose store, doctors' surgery, coffee shops, chemist and many more.

The apartment consists of two generously sized double bedrooms of which the larger of the two features fitted storage. Additionally the apartment also features a family bathroom and a large open lounge/kitchen/dining area. The latter is the real hub of the home, ideal for entertaining and offering generous amounts of space and supplying further versatility. The decorative standard to the home is high and highlights the ease on offer with the property.

Externally the property offers allocated parking as well as communal garden space. An early viewing is highly advised to avoid disappointment.

Council Tax band: C

Tenure: Leasehold

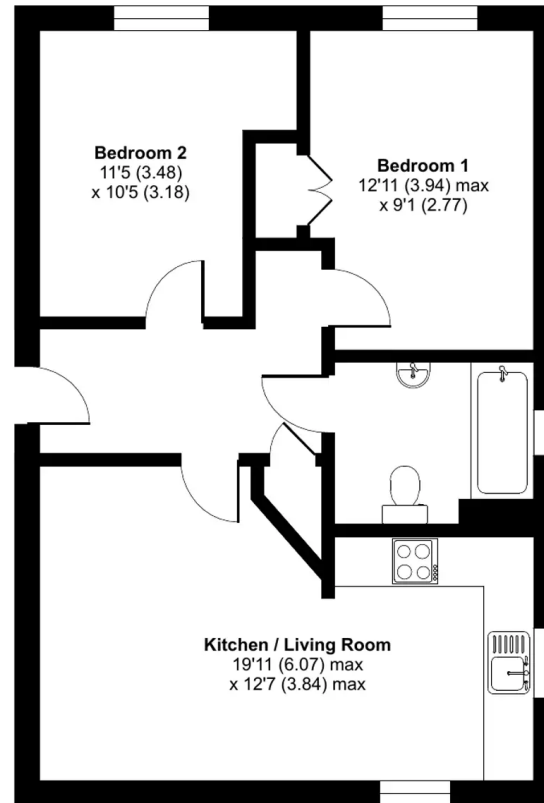
Loyd Lindsay Square, Winchester, SO22

Approximate Area = 598 sq ft / 55.6 sq m

Shed = 24 sq ft / 2.2 sq m

Total = 622 sq ft / 57.8 sq m

For identification only - Not to scale



GROUND FLOOR





Dybles

Unit 4, Black Swan Buildings Southgate Street - SO23 9DT

01962 866644 • winchester@dybles.com • www.dybles.com