



28 Dinsdale Gardens, Rustington BN16 3NH
£335,000 Freehold

**HAWKE &
METCALFE** 
INDEPENDENT ESTATE AGENTS

INDEPENDENT ESTATE & LETTING AGENTS

- End of Terrace House
- 3 Bedrooms
- Close to Village & Shops
- Ground Floor Cloakroom
- Modern Kitchen & Bathroom
- West Rear Garden
- Parking Space & Garage
- Council Tax Band 'C'
- EPC Rating: - 'D'

A three bedroom end of terrace house with garage and parking space, conveniently situated in central Rustington close to the village centre and shops.

Features include gas central heating, double glazing, modern kitchen, bathroom and ground floor cloakroom, west facing rear garden, garage and additional parking space.

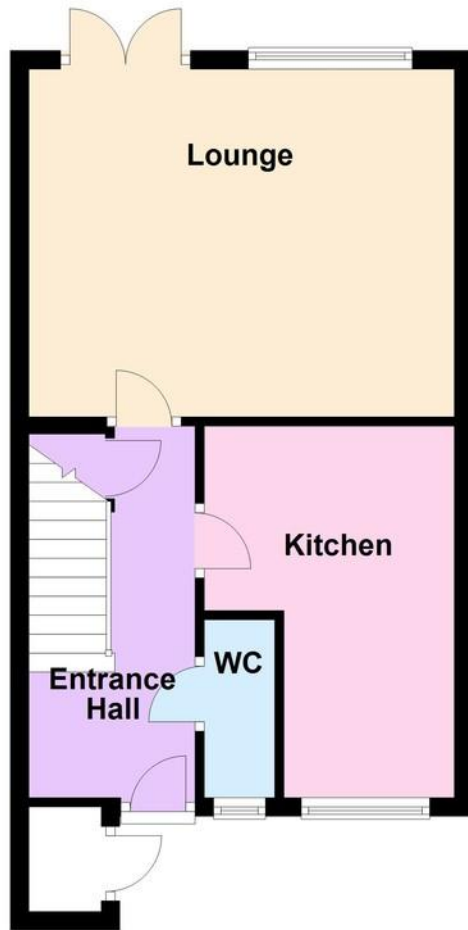
In brief the accommodation comprises: - entrance hall, ground floor cloakroom, lounge, kitchen, three bedrooms and a bathroom/WC. Outside there is a feature west facing rear garden with direct access into the garage and the house is offered for sale in excellent decorative order throughout.

Dinsdale Gardens is pleasantly situated in the centre of Rustington and can be accessed from Wakehurst Place via either Church Road or Woodlands Avenue.



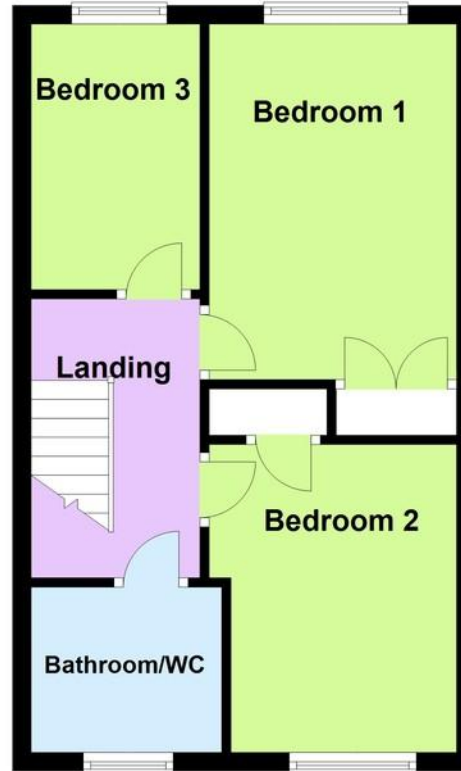
Ground Floor

Approx. 36.9 sq. metres (397.3 sq. feet)



First Floor

Approx. 36.0 sq. metres (387.0 sq. feet)



ENTRANCE HALL

GROUND FLOOR CLOAKROOM

KITCHEN

13' 1" x 8' 10" (3.99m x 2.69m)
max

LOUNGE

15' x 12' 3" (4.57m x 3.73m)

BEDROOM 1

12' 7" x 8' 10" (3.84m x 2.69m)

BEDROOM 2

10' 10" x 8' 10" (3.3m x 2.69m)
max

BEDROOM 3

9' 5" x 6' (2.87m x 1.83m)

BATHROOM/WC

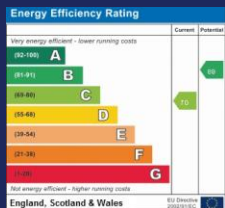
WEST REAR GARDEN

ALLOCATED PARKING SPACE

GARAGE

16' 6" x 8' (5.03m x 2.44m)

Total area: approx. 72.9 sq. metres (784.2 sq. feet)



01903 850450

90 THE STREET, RUSTINGTON, WEST SUSSEX,
BN16 3NJ

sales@hawkemetcalf.co.uk

www.hawkemetcalf.co.uk

