



**Madden Road, Plymouth, PL1 4NE**

**£155,000 Share of Freehold**





## Madden Road

Plymouth, PL1 4NE

This west-facing apartment is a peaceful and private retreat, perfect for those looking for a relaxing escape from the hustle and bustle of city life.

Council Tax band: A

Tenure: Share of Freehold

- Two Double Bedrooms
- Built-In Wardrobes
- Two Garages
- Storage unit
- West Facing
- Stylishly Fitted Kitchen
- Shower Room
- Second floor Maisonette





## BALCONY

### Garage

Two separate Garages

### Permit

1 Parking Space

### Tenure & Services

Tenure: Share of Freehold

Lease Length: 999 years from 1993

Service charge: £80 pcm

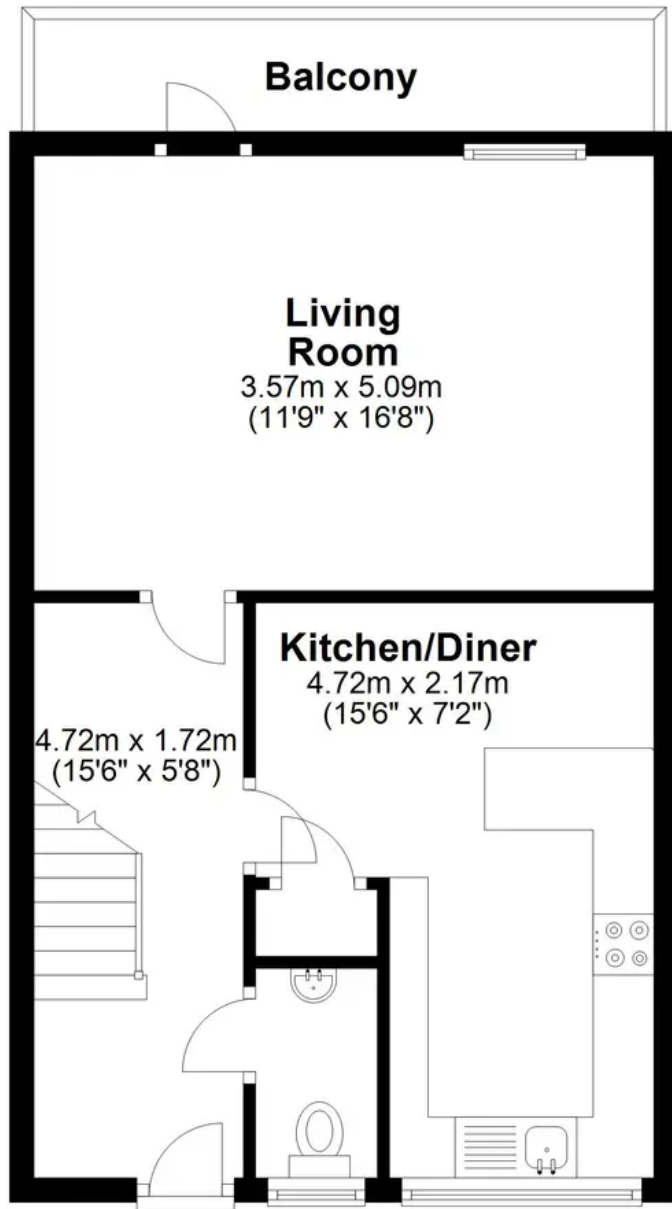
Council Tax Band: A

EPC: C



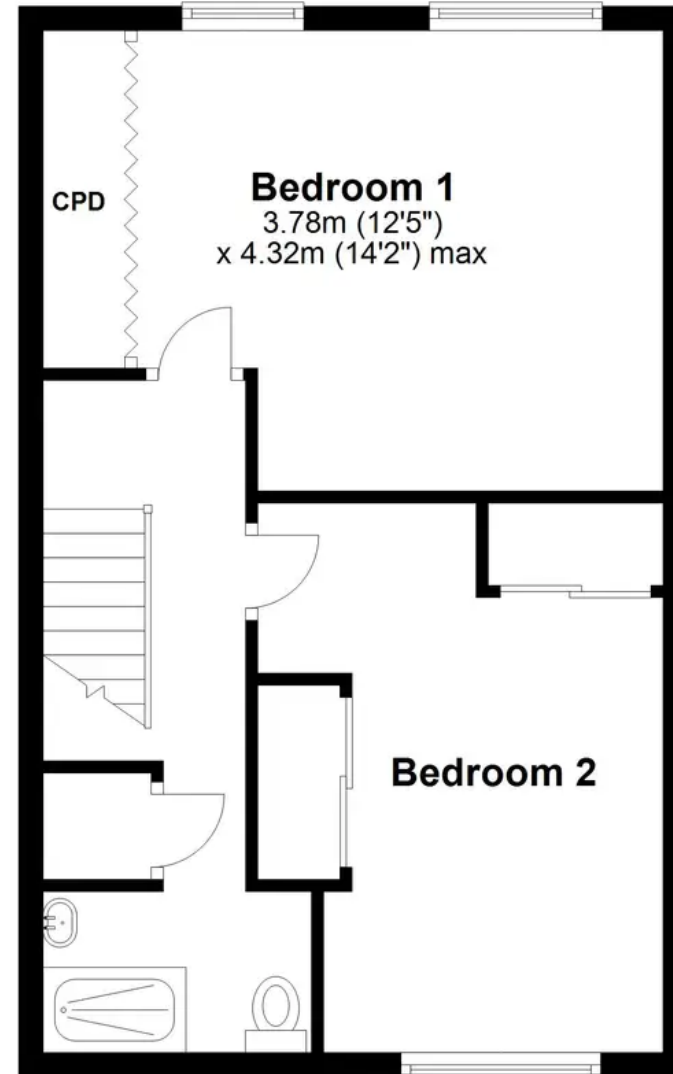
## Ground Floor

Approx. 42.7 sq. metres (460.1 sq. feet)



## First Floor

Approx. 42.7 sq. metres (460.1 sq. feet)



Total area: approx. 85.5 sq. metres (920.3 sq. feet)

**Madden road, Plymouth**



## Atwell Martin

Atwell Martin, 65 Southside Street - PL1 2LA

01752 202121

[plymouthsales@atwell-martin.co.uk](mailto:plymouthsales@atwell-martin.co.uk)

[plymouth.atwellmartin.co.uk/](http://plymouth.atwellmartin.co.uk/)

Atwell Martin Plymouth endeavour to ensure the accuracy of property details produced and displayed. Please note that we have not tested any apparatus, equipment, fixtures, fittings or services and so cannot verify that they are connected, in working order or fit for purpose. It is imperative that the buyer of any property makes such checks, prior to purchase so as to satisfy themselves of the properties suitability for their purchase. .