



Leverton Gardens, Wantage

Guide Price £550,000

Wantage

Simpsons

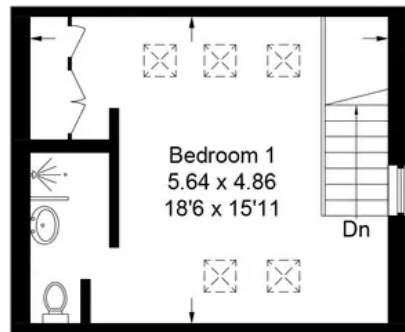
The Proactive Agent



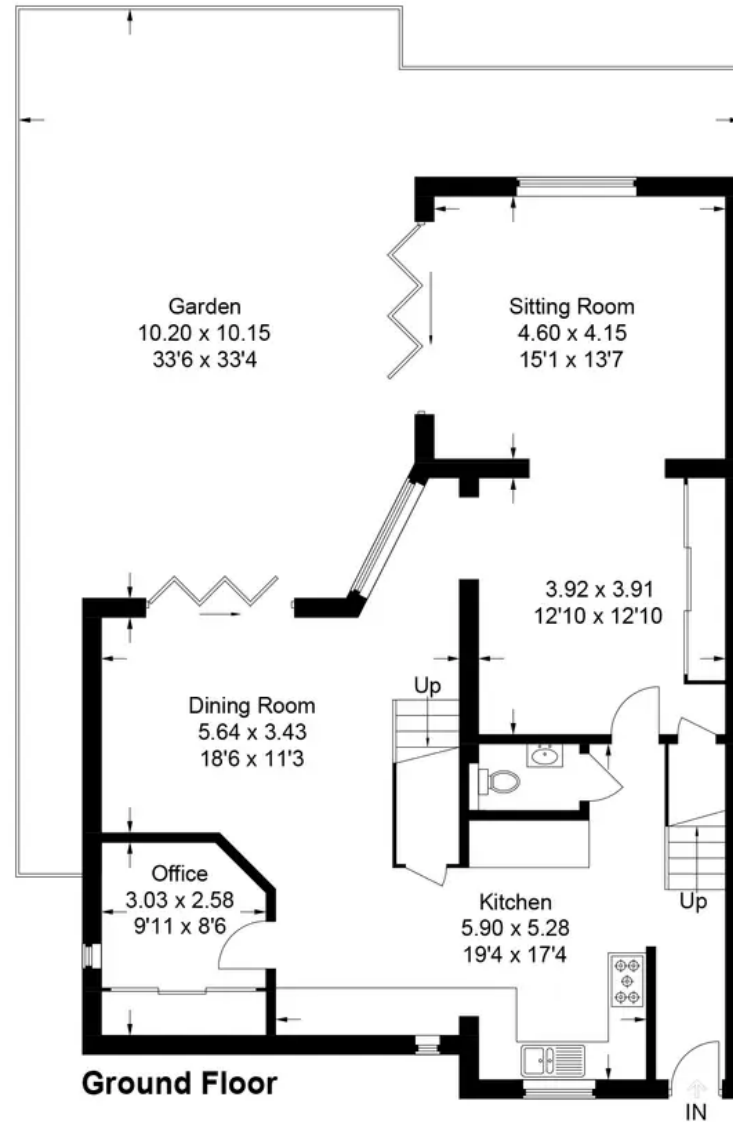
SCAN THE
QR CODE
FOR DETAILS



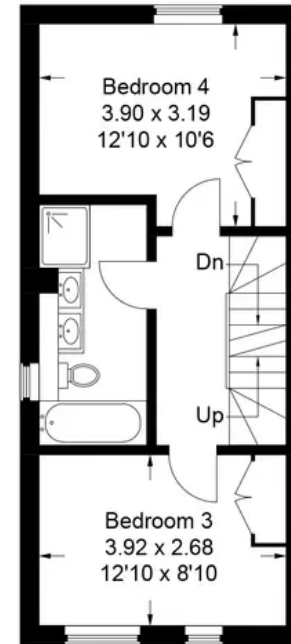
Approximate Gross Internal Area
 Ground Floor = 100.7 sq m / 1,084 sq ft
 First Floor = 64.5 sq m / 694 sq ft
 Second Floor = 25.7 sq m / 277 sq ft
 Total = 190.9 sq m / 2,055 sq ft



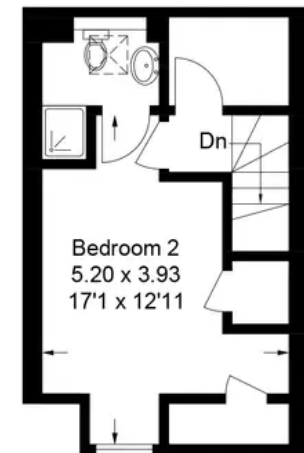
First Floor



Ground Floor



First Floor



Second Floor

This plan is for layout guidance only. Not drawn to scale unless stated. Windows and door openings are approximate. Whilst every care is taken in the preparation of this plan, please check all dimensions, shapes and compass bearings before making any decisions reliant upon them.

Leverton Gardens

Wantage, Wantage

This hidden gem has been beautifully finished to a very high standard for a contemporary and chic feel. Offering spectacular entertainment space that really will impress your guests and tucked away in a quiet and private cul-de-sac which is within walking distance to the Wantage Market Place.

Council Tax band: D

Tenure: Freehold

- Secluded and beautifully landscaped rear garden
- Over 2000 sqft of accommodation
- Immaculately presented throughout
- Walking distance to Wantage market place
- Four double bedrooms a bathroom and two en-suites
- Extensive entertaining space
- South-west facing garden
- Bespoke 'Schuller' kitchen with NEFF integrated appliances and Quooker boiling tap



SCAN THE
QR CODE
TO BOOK
YOUR VIEWING



