

SOLD STC



Willow Mount, Park Hill

4 Bedrooms, 1 Bathroom, Town House

Asking Price Of £535,000

MARTIN&CO



Willow Mount, Park Hill

4 Bedrooms, 1 Bathroom

Asking Price Of £535,000

Don't miss this FANTASTIC 4 BEDROOM townhouse enjoying a quiet yet convenient POPULAR setting in leafy Park Hill.

Well presented throughout, the property comprises a study/bedroom4, cloakroom/w.c. and utility room on the ground floor, a large reception room, dining room, and fitted kitchen on the first floor and 3 bedrooms together with the family bathroom/wc on the top floor. Features to note include gas heating, double glazing. Externally there is a driveway, garage to the front and an easily managed private garden at the rear.

- Wonderful Family House
- Park Hill Area
- Four Bedrooms
- Over 3 Floors
- Garage

East Croydon Station is approximately half a mile away and there are regular bus-services nearby allowing easy access. An excellent range of local shops, Sainsbury's Local and the fabulous Boxpark as well as the town centre itself are also within striking distance.

Call the seller's sole agent, Martin & Co Croydon, now for an appointment to view!





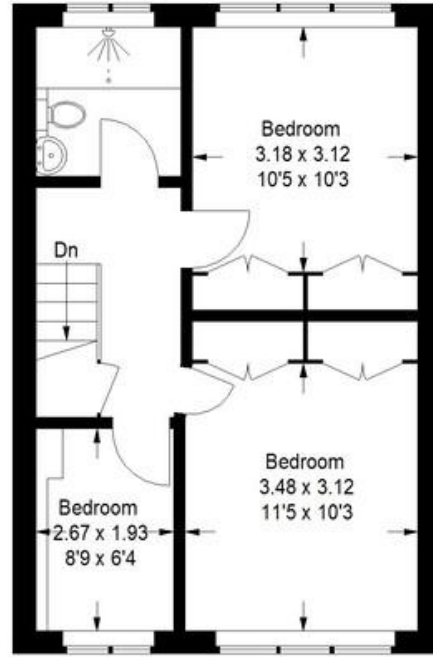
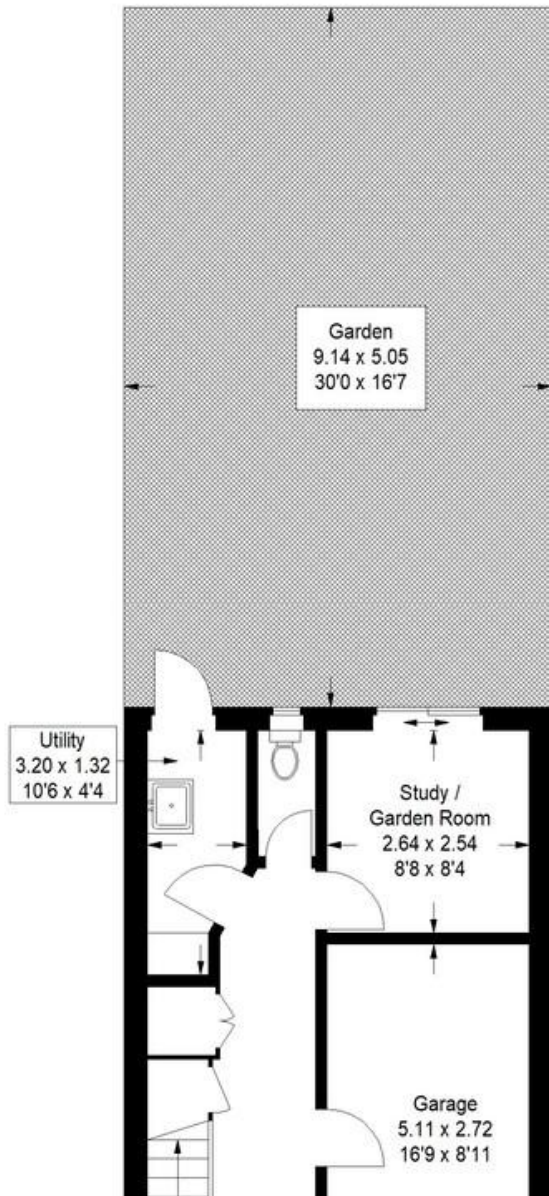


%epcGraph_c_1_441%

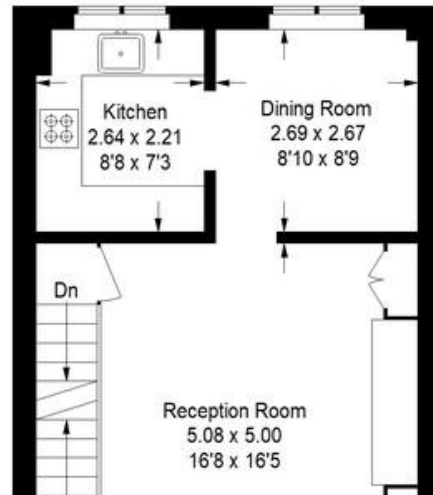


Willow Mount CR0

Approximate Gross Internal Area
Ground Floor (Including Garage)
40.3 sq m / 434 sq ft
First Floor = 39.5 sq m / 425 sq ft
Second Floor = 39.5 sq m / 425 sq ft
Total = 119.3 sq m / 1284 sq ft



Second Floor



Martin & Co Croydon

145 Brighton Road • South Croydon • CR2 6EF
T: 0208 688 8565 • E: croydon@martinco.com

0208 688 8565

<http://www.martinco.com>

MARTIN&CO

Accuracy: References to the Tenure of a Property are based on information supplied by the Seller. The Agent has not had sight of the title documents. A Buyer is advised to obtain verification from their Solicitor. Items shown in photographs including but not limited to carpets, fixtures and fittings are not included unless specifically mentioned within the sales particulars. They may however be available by separate negotiation. Buyers must check the availability of any property and make an appointment to view before embarking on any journey to see a property. No person in the employment of the agent has any authority to make any representation about the property, and accordingly any information given is entirely without responsibility on the part of the agents, sellers(s) or lessors(s). Any property particulars are not an offer or contract, nor for part of one. **Sonic / Laser Tape:** Measurements taken using a sonic / laser tape measure may be subject to a small margin of error. **All Measurements:** All Measurements are Approximate. **Services Not tested:** The Agent has not tested any apparatus, equipment, fixtures and fittings or services and so cannot verify that they are in working order or fit for the purpose. A Buyer is advised to obtain verification from their Solicitor or Surveyor. **Mortgage & Financial Advice:** The Martin & Co mortgage service is provided by London & Country Mortgages the UK's largest Independent Fee-Free mortgage broker of Beazer House, Lower Bristol Road, Bath, BA2 3BA. Authorised and regulated by the Financial Conduct Authority. Their FCA number is 143002. YOUR HOME IS AT RISK IF YOU DO NOT KEEP UP REPAYMENTS ON A MORTGAGE OR OTHER LOANS SECURED ON IT. Full written quotation available on request. A suitable life policy may be required. Loans subject to status. Minimum age 18. If you are making a cash offer, we shall require written confirmation of the source and availability of your funds in order that our client may make an informed decision.

