



Saltsman Road | Bury St Edmunds | | IP32 7QG

Brand new two bedroom, shared ownership property available on the popular Lark Grange Development with Havebury Housing Partnership. This beautiful mid terrace property benefits from a fully fitted modern kitchen, allocated parking for two cars and carpets & flooring throughout. Price based on a 40% share.

Shared Ownership £107,000

- New Build
- Shared Ownership
- Two Bedrooms
- Mid Terrace
- Allocated Parking
- No Staircase Restrictions
- Downstairs W/C

Approximate Room Sizes

ENTRANCE HALL

KITCHEN 10' 0" x 8' 3" (3.05m x 2.53m) A modern kitchen with a range of base and wall units. Roll edge work surfaces with inset single bowl and drainer sink unit. Integrated hob, cooker and extractor. Space for appliances.

LOUNGE/DINER 15' 4" x 10' 6" (4.68m x 3.21m)

WC

FIRST FLOOR LANDING

BEDROOM 1 11' 8" x 8' 1" (3.56m x 2.48m)

BEDROOM 2 15' 4" x 10' 6" (4.68m x 3.21m)

BATHROOM White suite comprising of a close coupled wc, pedestal wash hand basin, panelled bath with shower over. Radiator and complimentary tiling.

OUTSIDE SPACE The rear gardens commence with a patio area and the remainder laid to lawn. Timber shed and fence. Parking for two cars.

AGENTS NOTE

Full price: £267,500

40% share: £107,000

60% Rent: £367.81pcm

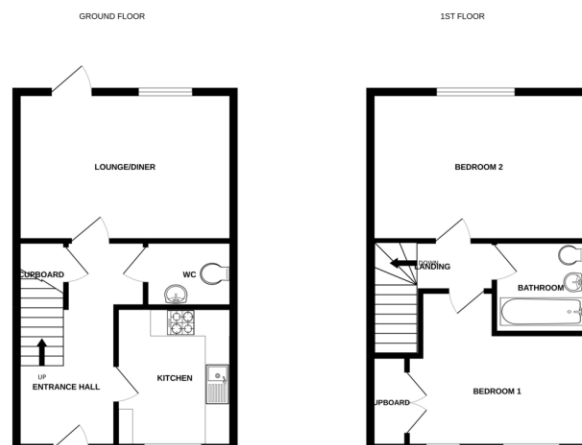
Service charge: £10.45pcm

Local Authority – West Suffolk Council

Council Tax Band – TBC

Tenure – Leasehold

Post Code – IP32 7QG



Whilst every attempt has been made to ensure the accuracy of the floorplan, the measurements of rooms, corridors, stairs and any other areas are approximate and the responsibility is made for any error, omission or misstatement. This plan is for guidance purposes only and should not be used as a basis for any prospective purchase. The agents, suppliers and applicants accept liability for any errors and the publisher as to their content and accuracy. ©2022



Contact Details

6 The Traverse, Bury St Edmunds, IP33 1BJ

Tel: 01284 769598

Email: burystedmunds@bychoice.co.uk



Agents Note: Whilst every care has been taken to prepare these sales particulars, they are for guidance purposes only. All measurements are approximate and for general guidance purposes only and whilst every care has been taken to ensure their accuracy, they should not be relied upon and potential buyers are advised to check the measurements

