



23 Dauntsey Avenue, Blackpool

Blackpool

Offers Over **£240,000**

23 Dauntsey Avenue

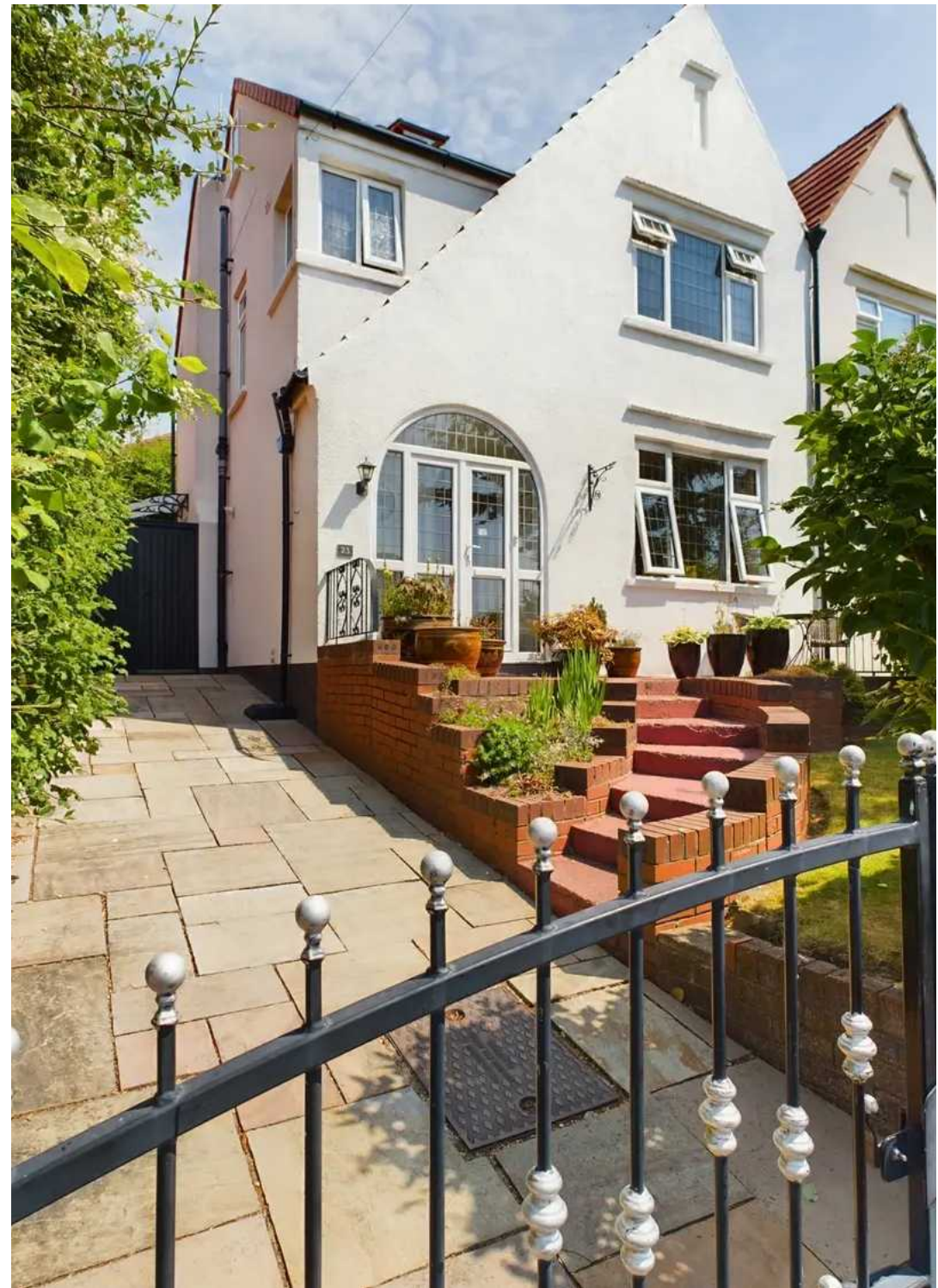
Blackpool

This well presented semi detached house is situated in a popular and convenient location just off Newton Drive close to Victoria Hospital, Stanley Park and Herons Reach with local shops and amenities close by. The accommodation comprises entrance vestibule, hallway, WC, lounge, orangery and fitted kitchen. The first floor has two bedrooms and a stylish bathroom with a mezzanine style loft bedroom. The property has a gas central heating system installed and the windows are UPVC double glazed. Front garden area with driveway providing off-road parking. Enclosed split-level rear garden with garage.

Council Tax band: C

Tenure: Freehold

- **Well Presented Throughout**
- **Close to Victoria Hospital & Stanley Park**
- **Orangery to Rear**
- **GF WC**
- **Mezzanine Style Loft Bedroom**
- **Garage**





Entrance Vestibule

Hallway

Lounge

Orangery

Kitchen

WC

Landing

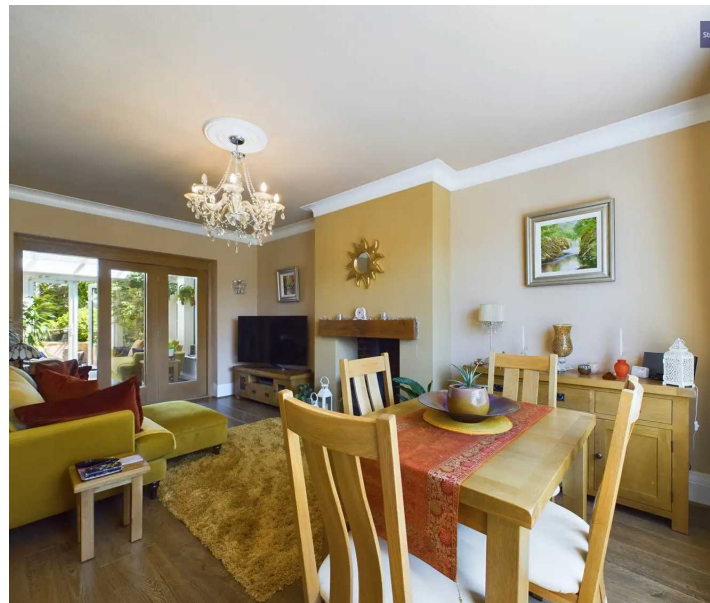
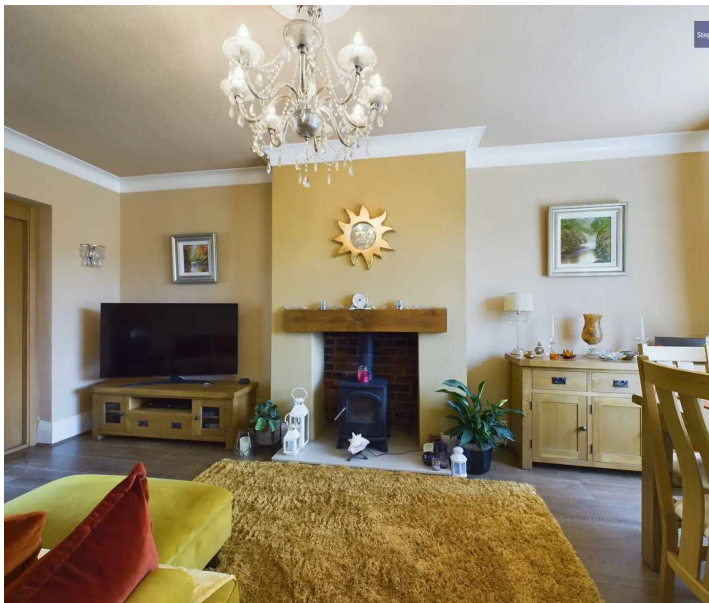
Bedroom 2

Bedroom 3

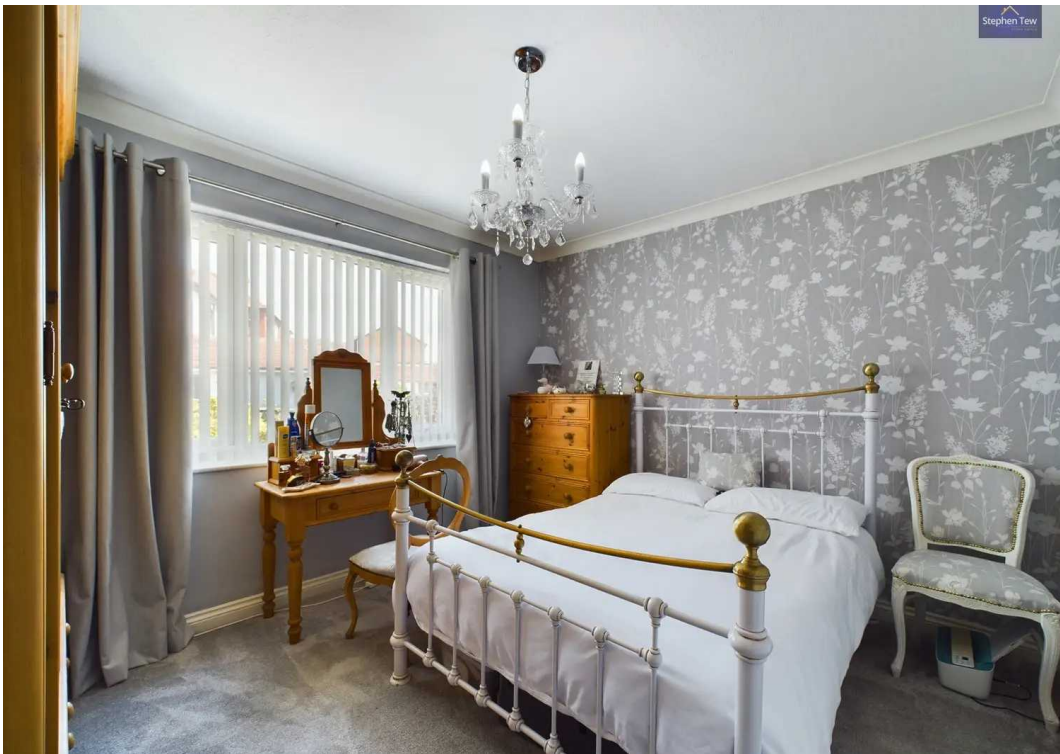
Bathroom

Bedroom 1

Mezzanine style Loft Bedroom (A mezzanine bedroom is an intermediate level between two floors which has been designed for users to sleep in)









FRONT GARDEN

REAR GARDEN

OFF ROAD

1 Parking Space

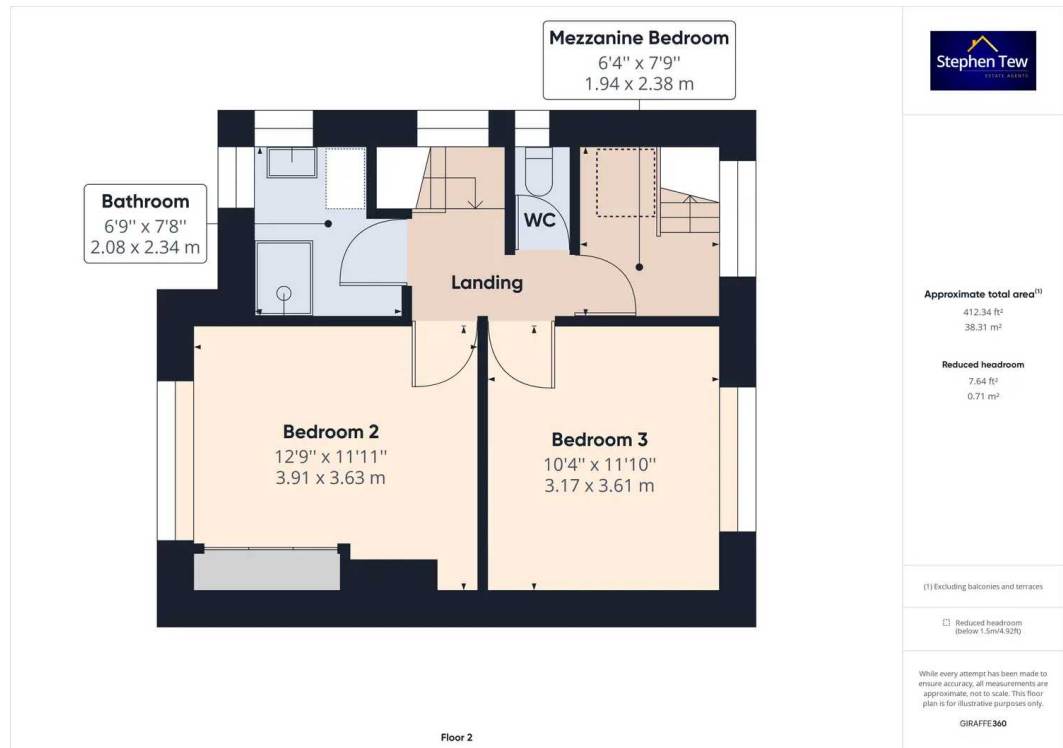
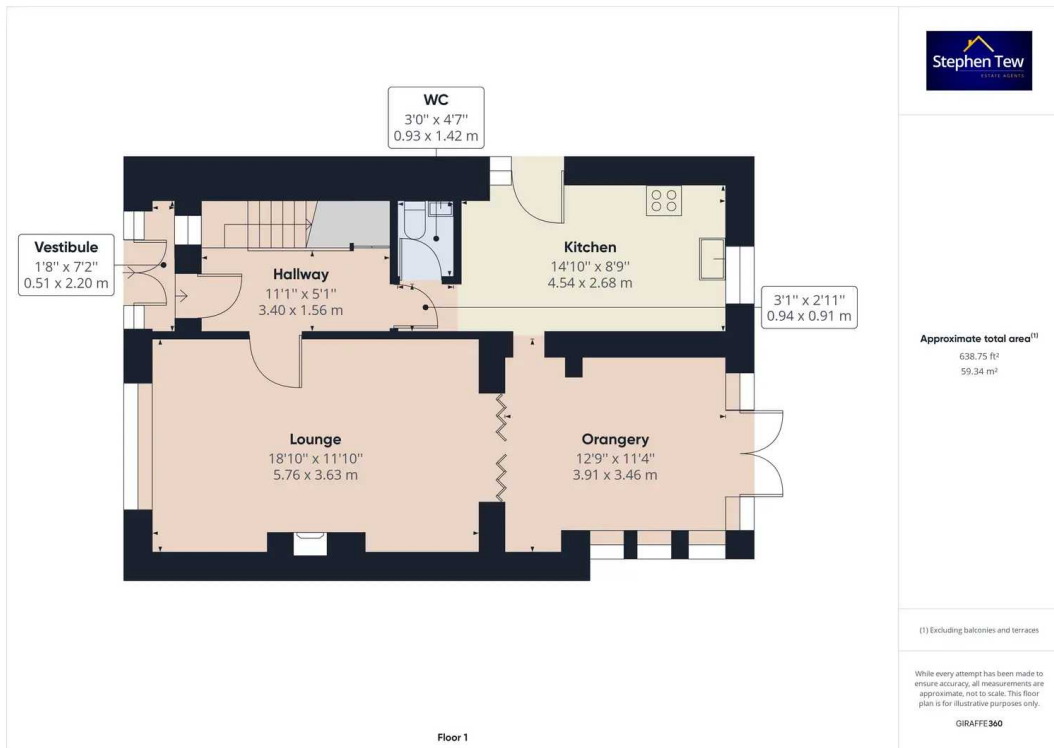
PERMIT

2 Parking Spaces

GARAGE

Single Garage







Stephen Tew Estate Agents

Stephen Tew Estate Agents, 132 Highfield Road - FY4 2HH

01253 401111

info@stephentew.co.uk

www.stephentew.co.uk

