



♥ 4 Bedroom Semi-Detached House Asking Price Of £475,000

Kennet Rise, Axford, Marlborough, SN8 2EZ

mcfarlane
property.com

Kennet Rise

- The village of Axford
 - Four bedrooms
 - Three reception rooms
-

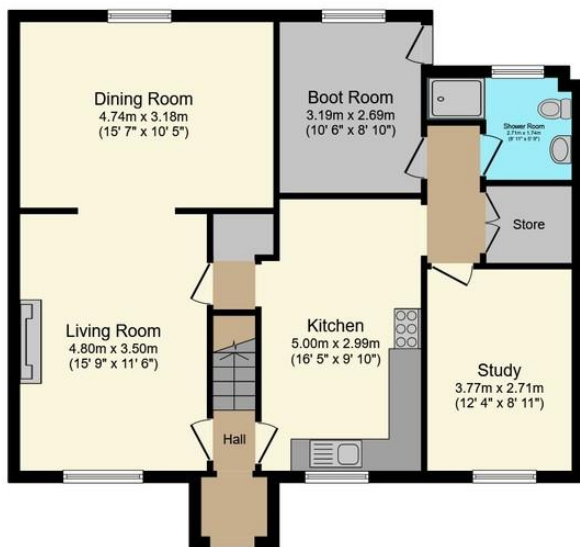
5 Kennet Rise is set back from the road, it is a well-proportioned extended house of red brick elevations under a tiled roof which has been improved over many years. At just over 1500 square feet, it offers generous family accommodation. The kitchen is the centre of the house with three reception rooms offering space for entertaining. All rooms overlook mature gardens with exceptional views over the Kennet valley and fields at the rear. Ample storage, a shower and boot room complete the ground floor. From the entrance hall stairs rise to three double bedrooms a single bedroom/study and a family bathroom. The house is set back from the road with a large front garden, with shrubs and borders at the rear is a substantial garden which is partially paved but mainly laid to lawn. The garden enjoys good privacy and backs onto fields. Private steps allow access from street parking directly to the front garden.



Axford is a small village in Ramsbury parish in the English county of Wiltshire. It lies on the north bank of the river Kennet, about 3.5 miles south-west of the village of Ramsbury with its exceptional primary school and the same distance east of Marlborough, it has far reaching views across the surrounding countryside and beyond. The historic and thriving market town of Marlborough provides an extensive range of quality independent and well-known retailers, public houses, restaurants, including Rick Stein's, cafes, and a newly opened Cinema. Popular annual events include the Marlborough Literature Festival. The town is also home to the famed Marlborough College, a sports centre and an excellent state secondary school, St. John's. Marlborough is sited along the M4 corridor close to J15. Intercity (Paddington) rail connections can be found at Swindon, Hungerford, Great Bedwyn and Pewsey offering access to London and the West Country.

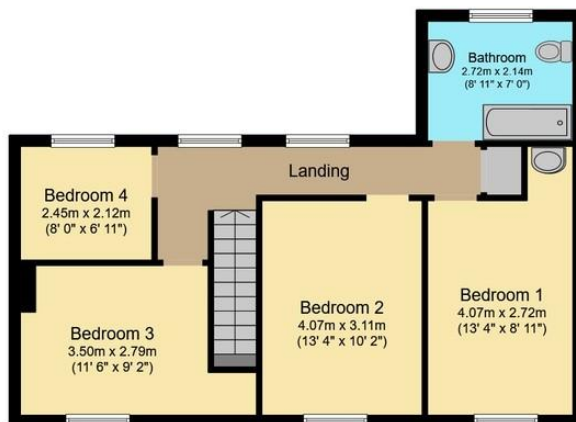
The countryside surrounding Marlborough is within the North Wessex Downs Area of Outstanding Natural Beauty and includes the historic World Heritage site of nearby Avebury and Savernake Forest, renowned for its ancient oak trees.





Ground Floor

Floor area 84.9 sq.m. (913 sq.ft.) approx



First Floor

Floor area 57.9 sq.m. (623 sq.ft.) approx

Total floor area 142.8 sq.m. (1,537 sq.ft.) approx

This Floor Plan is for illustration purposes only and may not be representative of the property. The position and size of doors, windows and other features are approximate. Unauthorised reproduction prohibited. © PropertyBOX

We 
where you
LIVE

Our team are friendly, experienced and are all local. They know it better than they do their own living rooms and can help you find what you're looking for because **we love where we live.**

We would be delighted to show you around this property.

Because every home needs a personal touch.

If you would like to view this property then please get in touch.

📞 01672 514380

✉️ marlborough@mcfarlaneproperty.com

mcfarlaneproperty.com

mcfarlane
property.com

Cricklade.

102 High Street
Cricklade SN6 6AA

📞 01793 751044

Marlborough.

106 High Street
Marlborough SN8 1LT

📞 01672 514380

Old Town.

28-30 Wood Street
Swindon SN1 4AB

📞 01793 296880

Swindon.

The Village Centre,
Redhouse SN25 2FW

📞 01793 296600

Agents Note: Whilst every care has been taken to prepare these sales particulars, they are for guidance purposes only. All measurements are approximate are for general guidance purposes only and whilst every care has been taken to ensure their accuracy, they should not be relied upon and potential buyers are advised to recheck the measurements

