



Colley Wood, Kennington

Guide Price £500,000

Oxford

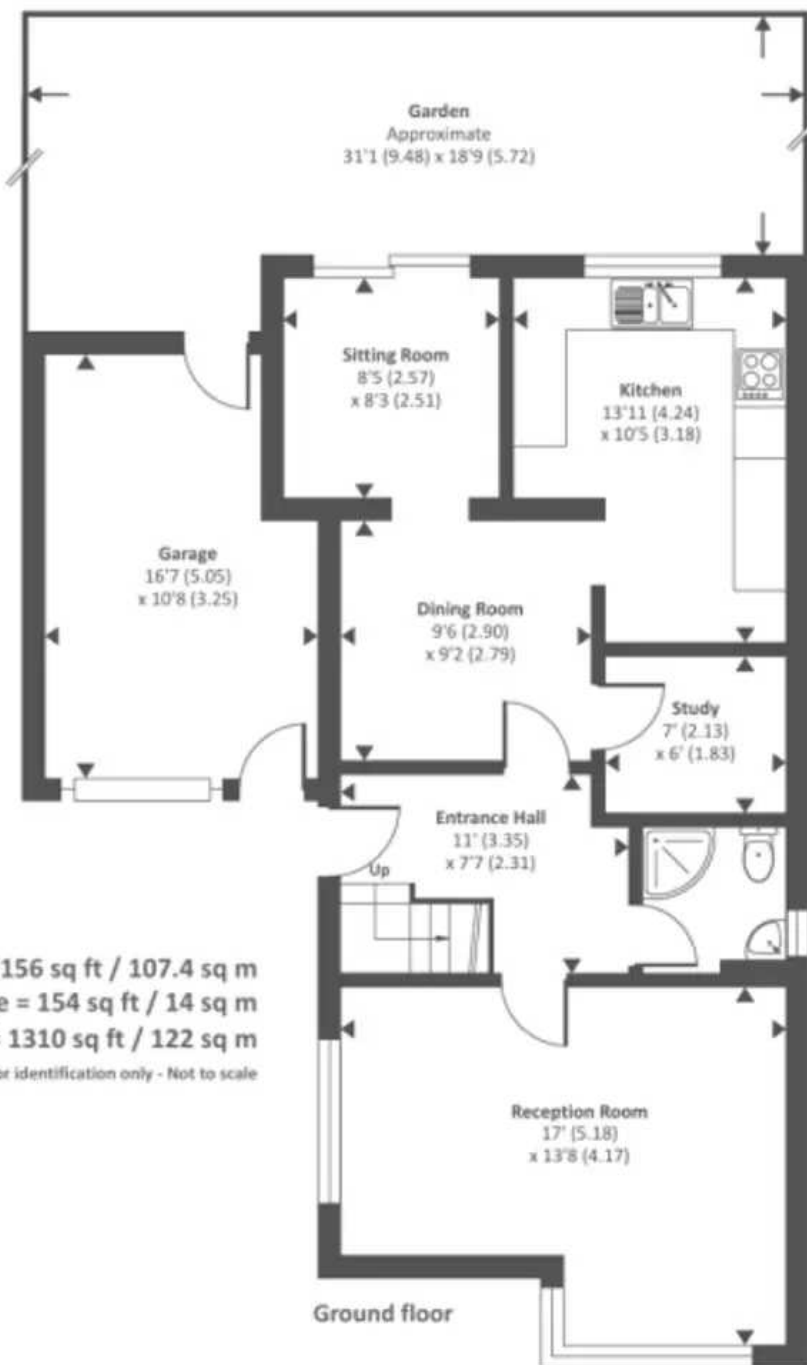
Simpsons

The Proactive Agent



SCAN THE
QR CODE
FOR DETAILS



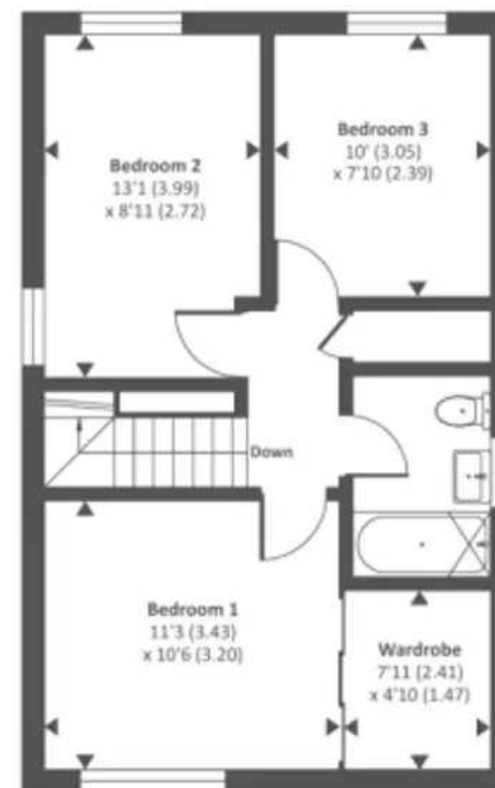


Approximate Area = 1156 sq ft / 107.4 sq m

Garage = 154 sq ft / 14 sq m

Total = 1310 sq ft / 122 sq m

For identification only - Not to scale



First floor

Colley Wood

Kennington, Oxford

A significantly extended family home located on the upper side of Kennington village.

Council Tax band: E

Tenure: Freehold

- Extended ground floor accommodation increasing the size of the kitchen and creating a new 'snug' overlooking the garden.
- Well kept low maintenance garden with a gate opening into Forest Side playing fields which connect into Bagley Woods.
- Driveway parking for 2/3 cars.
- Gas central heating and UPVC double glazing.
- St Swithuns Primary and Matthew Arnold Secondary school catchment area.
- Village pub, Co-Op, Fish & Chip and Chinese take away all within walking distance.



SCAN THE
QR CODE
TO BOOK
YOUR VIEWING

