

Love Homes



26, Park Leys, Harlington, Bedfordshire, LU5 6LY

Welcome to this stunning extended four bedroom semi detached home, located in a sought after village location. Situated in close proximity to the mainline railway station and within the catchment areas of Harlington Lower and Upper schools, this property offers convenient and desirable living. Upon entering the property, you will find an integral storage area, which can be utilised as a home office or study area, providing versatile space to suit your needs. The living room is bright and airy, creating a welcoming atmosphere throughout. The heart of the home is this impressive fitted kitchen/family room with Karndean flooring and boasting a breakfast bar and featuring Bosch appliances, including a dishwasher, induction hob, and Pyrolytic self cleaning oven. French doors lead out to the rear garden, allowing for seamless indoor-outdoor living.



This property is presented by Mark Dumbrell - a Love Homes property expert with over 25 years' experience.

Find out more about this property by scanning the QR code.



0.5m



4



1

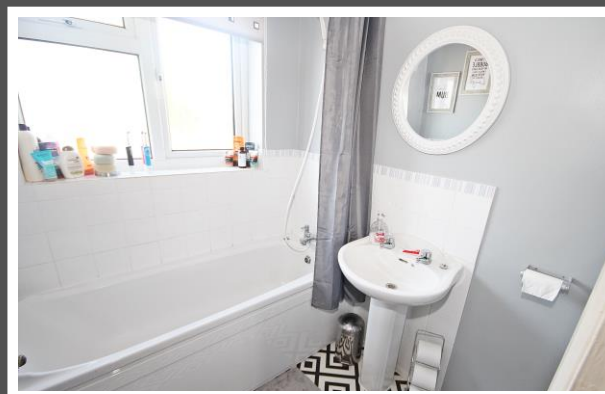


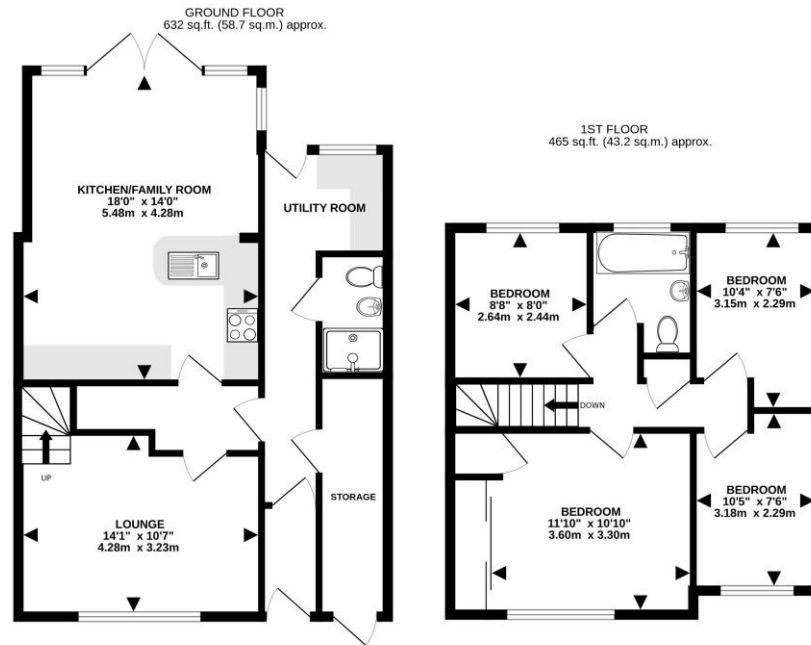
2

Tenure: Freehold Council Tax Band: C



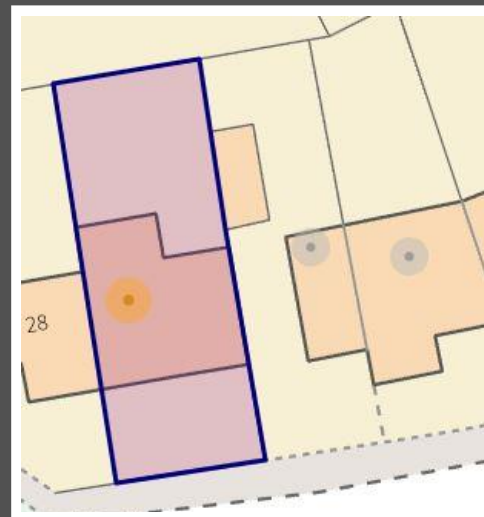
Harlington is a village and civil parish located in Bedfordshire, near the M1 motorway. The nearest town is Flitwick about three miles to the north. The village is about 1.5 miles from junction 12 of the M1. Harlington has a mainline railway station in the west of the village. It was built by the Midland Railway in 1868 on its extension to St. Pancras. The station is served by Thameslink route trains. From Harlington station, you can travel north to Flitwick and Bedford or South to Luton, Central London and Brighton.





TOTAL FLOOR AREA: 1096 sq.ft. (101.9 sq.m.) approx.
 Drawn by Love Homes for illustrative purposes only. Measurements and areas shown are approximate.
 Made with Metropix ©2023

Score	Energy rating	Current	Potential
92+	A		
81-91	B		85 B
69-80	C	75 C	
55-68	D		
39-54	E		
21-38	F		
1-20	G		



These particulars are set out as a general outline in accordance with the Property Misdescriptions Act (1991) only for the guidance of intending purchasers or lessees, and do not constitute any part of an offer or contract. Details are given without any responsibility, and any intending purchasers, lessees or third parties should not rely on them as statements or representations of fact but must satisfy themselves by inspection or otherwise as to the correctness of each of them. We have not carried out a structural survey and the services, appliances and specific fittings have not been tested. All photographs, measurements, floor plans and distances referred to are given as a guide only and should not be relied upon for the purchase of carpets or any other fixtures or fittings. Gardens, roof terraces, balconies, and communal gardens as well as tenure and lease details cannot have their accuracy guaranteed for intending purchasers. Lease details, service ground rent (where applicable) is given as a guide only and should be checked and confirmed by your solicitor prior to exchange of contracts. No person in the employment of Love Homes has any authority to make any representation or warranty whatever in relation to this property. Purchase prices, rents or other prices quoted are correct at the date of publication and, unless otherwise stated, are exclusive of VAT. We retain the copyright in all advertising material used to market this Property.

2a Sharpenhoe Road, Barton-le-Clay, MK45 4SD
 Tel: 01582 882440
 Email: bartonleclay@lovehomes.uk
 www.lovehomes.uk



Love Homes