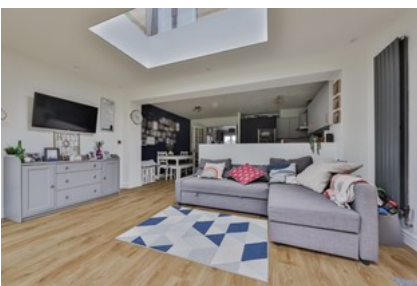




## Curlew Close, Beverley

**INVITING OFFERS BETWEEN £275,000 - £295,000**



- ✔ Smart Three Bedroom Family Property
- ✔ Superb Open Plan Dining/living/kitchen
- ✔ Having Been Extended Providing A Desirable Contemporary Lifestyle
- ✔ Located At The End Of A Cul-de-sac With Parking For Three Cars
- ✔ Within Walking Distance Of Beverley Town Centre & Highly Regarded Schools
- ✔ Freehold
- ✔ Council Tax Band D

Guide Price **£275,000**

Bedroom 3 Bathroom 1 Reception 1