



Millbay Road, Millbay, Plymouth, PL1 3NG

£325,000 LEASEHOLD





Millbay Road

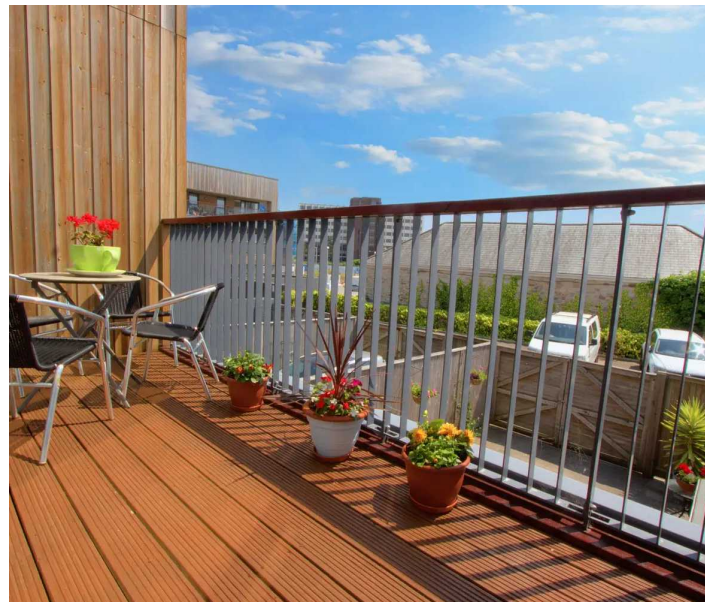
Millbay, Plymouth, PL1 3NG

Luxurious townhouse with private parking, large gardens & westerly facing balconies. Complete with three bedrooms, master Jack & Jill, lounge with balcony, kitchen/dining room, family bathroom & cloakroom. Located close to King Point Marina, Royal William Yard & Plymouth City Centre.

Council Tax band: D

Tenure: Leasehold

- South facing balcony
- Views over King Point Marina
- Jack & Jill Bathroom
- Generous Three Piece Bathroom Suite
- Securely gated parking space
- South Facing Garden
- Fully Fitted Kitchen
- Additional Permit Parking Available



Millbay Road

Millbay, Plymouth, PL1 3NG

You enter the property on the ground floor where you step foot into the entrance hallway. Immediately on your left is the second bedroom which is a great double and has well thought-out fitted cupboards. the next room down is a spacious three piece suite bathroom complete with a waste to ceiling mirror. To the back of the property is the fully fitted kitchen/diner which allows access to the rear garden and private parking space. The garden is south facing and is a real suntrap.

Upstairs, the main bedroom is fitted with cupboards and wardrobes and gives access to the Jack and Jill bathroom which is finished with a walk-in shower, hand wash basin and W/C. The third bedroom comfortably fits a single bed and storage, there is already a cupboard fitted in the bedroom. The real show piece is the living room on the first floor which has floor to ceiling uPVC windows and a door leading out to the south-facing balcony. From the living room and balcony you have uninterrupted views of king point marina stretching out to Drake's island. This property is perfect for entertaining or settling down to take in the sea views.





BALCONY

GARDEN

Secure Gated

1 Parking Space

Permit

2 Parking Spaces

1 + 1 visitor

Tenure & Services

Tenure: Leasehold

Lease length - 233 Years

Service Charge - £588pa

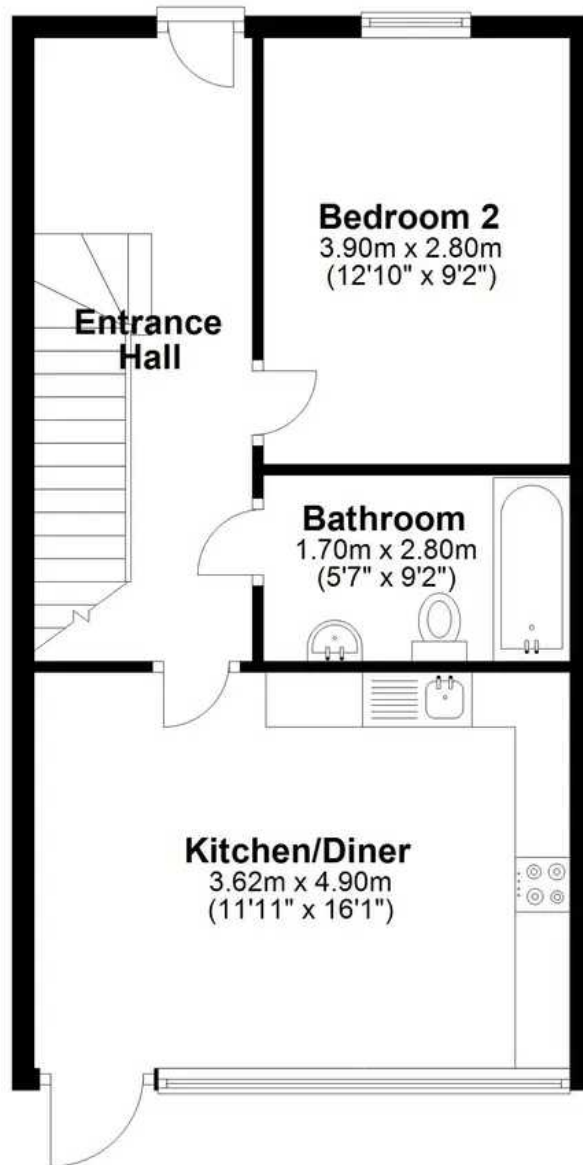
Ground Rent - £250pa

Council Tax band: D



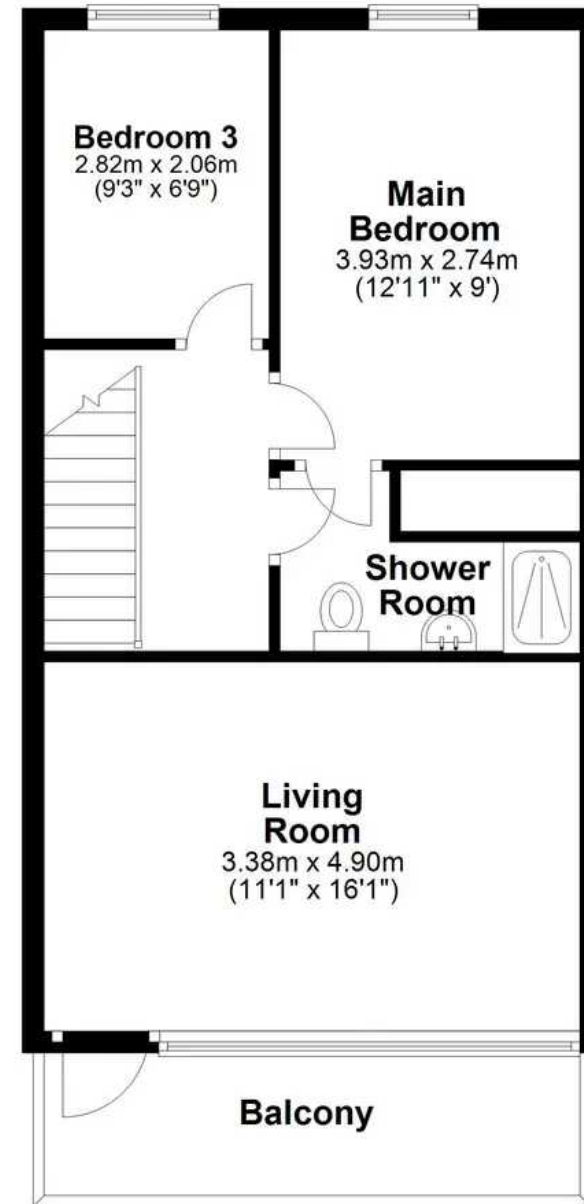
Ground Floor

Approx. 46.2 sq. metres (497.1 sq. feet)



First Floor

Approx. 44.9 sq. metres (482.8 sq. feet)



Total area: approx. 91.0 sq. metres (979.9 sq. feet)

Millbay Road, Plymouth



Atwell Martin

Atwell Martin, 65 Southside Street - PL1 2LA

01752 202121

plymouthsales@atwell-martin.co.uk

plymouth.atwellmartin.co.uk/

Atwell Martin Plymouth endeavour to ensure the accuracy of property details produced and displayed. Please note that we have not tested any apparatus, equipment, fixtures, fittings or services and so cannot verify that they are connected, in working order or fit for purpose. It is imperative that the buyer of any property makes such checks, prior to purchase so as to satisfy themselves of the properties suitability for their purchase. .