



**54 Summerson Lodge, 94 Alverstone Road**  
Southsea

Offers in Region of **£150,000**

 **chinneckshaw**





# 54 Summerson Lodge

, Southsea

We are delighted to market this large one bedroom retirement property in Summerson Lodge. With excellent facilities on site and attractive communal gardens we think this lovely flat would make you a comfortable home if you were looking to downsize.

You'll see a size nice hallway with storage cupboards which lead to our favourite room. The open plan Lounge Dining Room is just lovely with lots of light coming from it's window which overlooks the well tendered gardens below. It's a nice shape too and gives you plenty of furniture layout options. The kitchen is off this room and is well fitted with a modern range of wall and base cabinets.

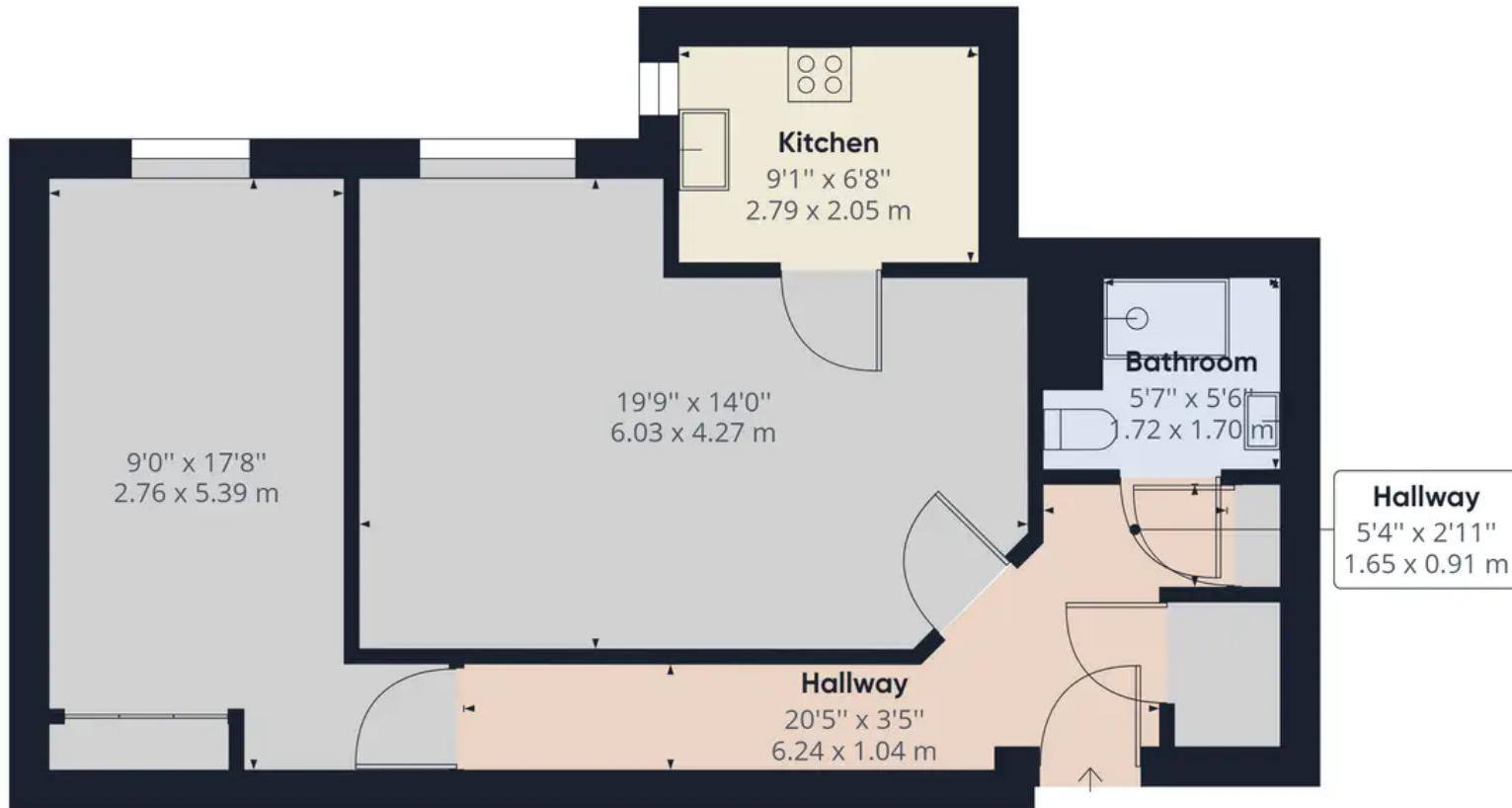
The Double Bedroom can be found at the end of the hallway and also features a fitted double wardrobe. The Shower Room is modern and well executed. Communal facilities are well catered for and include a residents lounge, laundry room, residents parking, lift and a guest suite which is available at a reasonable cost per night and subject to availability.

Agents note - This property offers no forward chain.

Council Tax band: B

Tenure: Leasehold





**Approximate total area<sup>(1)</sup>**

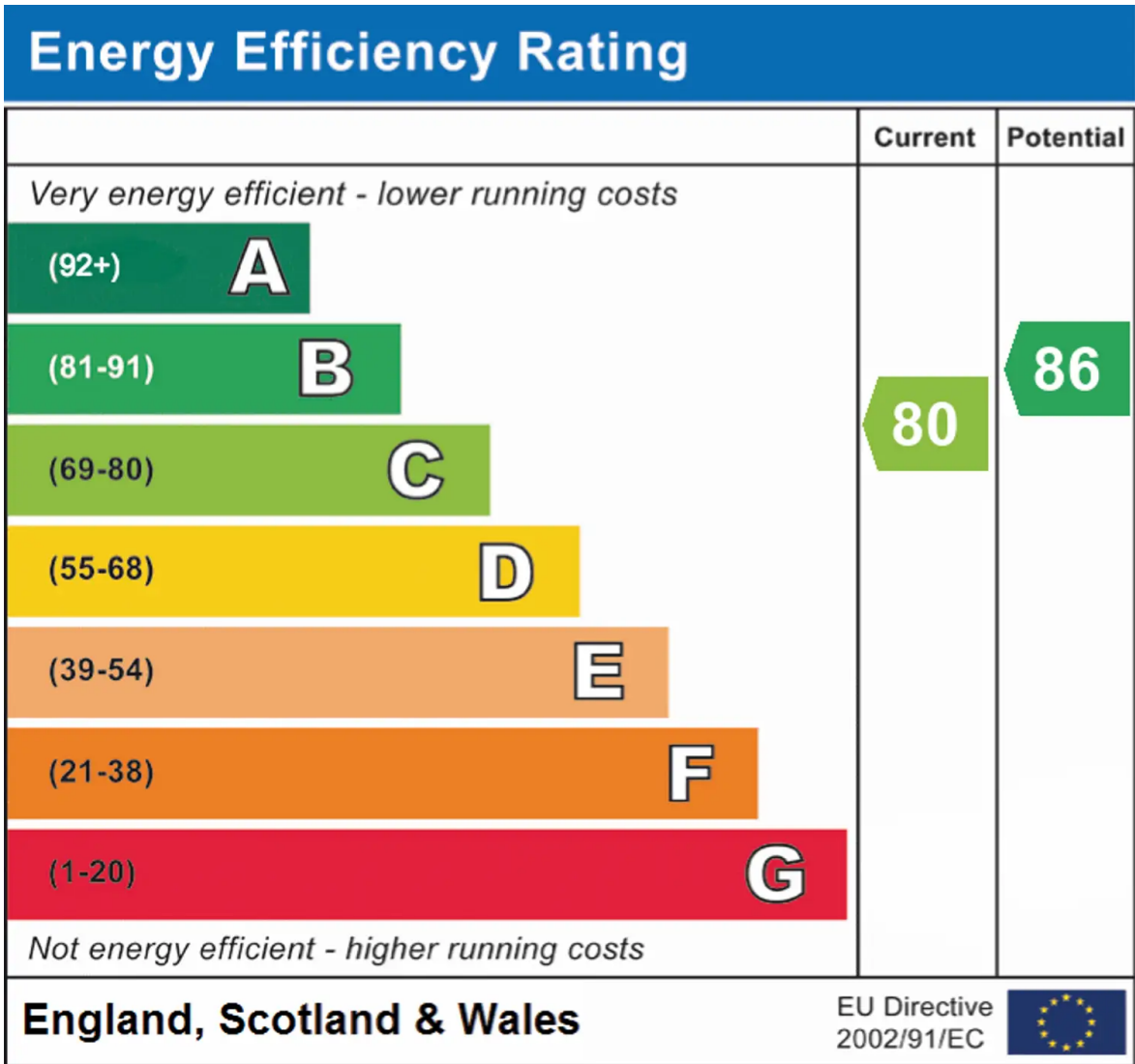
632.97 ft<sup>2</sup>

58.80 m<sup>2</sup>

(1) Excluding balconies and terraces

While every attempt has been made to ensure accuracy, all measurements are approximate, not to scale. This floor plan is for illustrative purposes only.

**GIRAFFE360**



## Chinneck Shaw

Bridge House, Milton Road, Portsmouth – PO3 6AN

023 9282 6731

hello@chinneckshaw.co.uk

www.chinneckshaw.co.uk/

Chinneck Shaw, Bridge House, Milton Road, PO3 6AN Consumer Protection from Unfair Trading Regulations 2008: These details are for guidance only and complete accuracy cannot be guaranteed. If there is any point which is of particular importance, verification should be obtained. The do not constitute a contract or part of a contract. All measurements are approximate. No guarantee can be given with regard to planning permissions or fitness for purpose. No apparatus, equipment, fixture or fitting has been tested. Items shown in the photographs are NOT necessarily included. Interested Parties are advised to check availability and make an appointment to view before travelling to see a property.