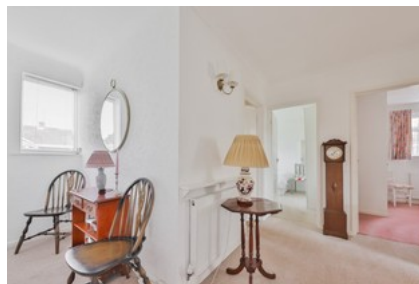




Molescroft Avenue, Beverley

INVITING OFFERS BETWEEN £360,000-£375,000



- ✔ Smart Three Bedroom Detached Bungalow
- ✔ Highly Desirable Location
- ✔ Move Into Condition
- ✔ Well Kept But Manageable Garden
- ✔ Side Drive & Garage
- ✔ Freehold
- ✔ Council Tax Band D

Guide Price **£360,000**

Bedroom 3 Bathroom 1 Reception 1