



6 Harlow Park Drive, Harrogate, North Yorkshire , HG2 0AR

£325,000 – NO CHAIN

6 Harlow Park Drive, Harrogate, North Yorkshire, HG2 0AR

A superb 3 bed semi detached home situated in a highly sought after location on Harlow Hill, to the south side of Harrogate.

The property benefits from gas central heating, uPVC double glazing and a particular feature to the house are the good sized south west facing gardens.

This superb family home is located close to excellent schooling, local shopping parade, the Pinewoods and Valley Gardens.





uPVC front door.

ENTRANCE HALL

Window to side, stairs to first floor.

LIVING/DINING ROOM

A particularly good sized room with sitting and dining areas, bay window to front, gas fire. Double doors to rear garden.

KITCHEN

Range of matching wall and base units, 1.5 stainless steel sink, built in oven and hob, integrated fridge/freezer. Space for washing machine and separate dryer. Windows to side and rear. Door to rear garden.



FIRST FLOOR

Landing, window to side. Access to roof void via pull down loft ladder, of which the attic is partly boarded.

BEDROOM 1

Window to front, built in wardrobes.

BEDROOM 2

Window to side, built in wardrobes.

BEDROOM 3

Window to front, built in cupboard.



BATHROOM

3 piece white suite incorporating bath, WC and wash basin, windows to side and rear. Heated towel rail.

OUTSIDE

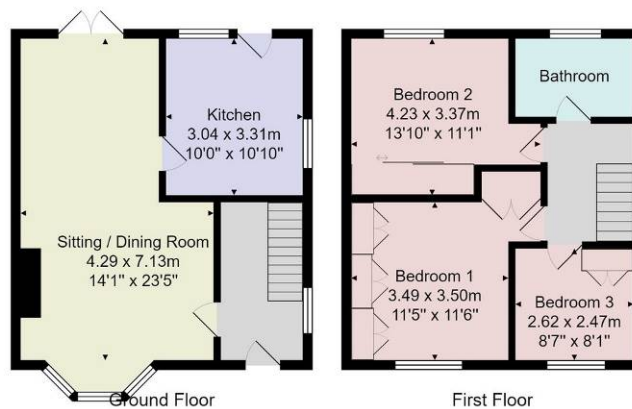
Driveway providing good off road parking.

A particular feature to the house are the generous south west facing rear gardens.

Tenure - Freehold

Council Tax Band - C





Total Area: 90.5 m² ... 974 ft²

All measurements are approximate and for display purposes only.
 No liability is accepted by either the agency or Box Property Solutions Ltd as to the exact measurements of the rooms.
 Box Property Solutions Ltd retains the copyright on this plan and allows agents to use it with agreed permission.

Verity Frearson

26 Albert Street, Harrogate,
 North Yorkshire, HG1 1JT

For all enquiries contact us on:

01423 562531

sales@verityfrearson.co.uk

