



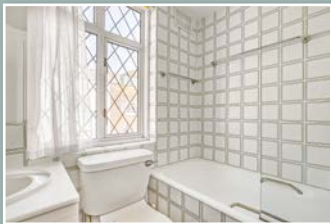
# RUTLAND STREET

KNIGHTSBRIDGE SW7

# A charming one bedroom period cottage, which forms part of a terrace of houses set behind pretty front gardens.

The property is situated in the heart of Knightsbridge Village and offers well balanced accommodation including a ground floor reception room and open-plan kitchen/dining room and guest WC on the lower ground floor and a principal bedroom with en-suite bathroom on the first floor.

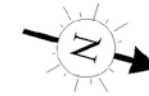
The house is situated moments from Hyde Park, Harrods and the world class range of shopping facilities and restaurants of Knightsbridge.



- Principal Bedroom with En-Suite Bathroom
- Reception Room
- Kitchen/Dining Room
- Utility Room
- Front Garden

**PRICE : £1,450,000**  
**TENURE : FREEHOLD**

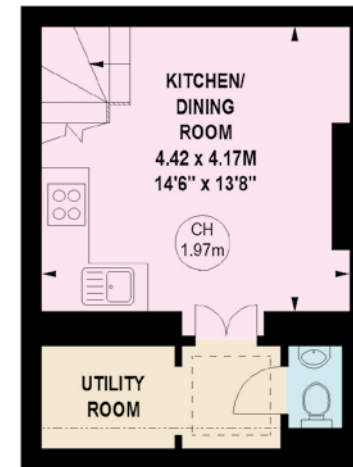
APPROXIMATE GROSS INTERNAL AREA  
69.12 sq m / 744 sq ft



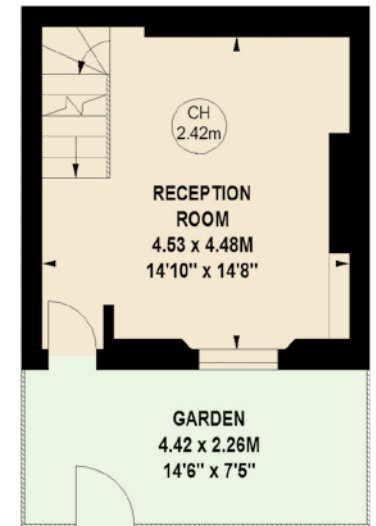
Key :  
CH - Ceiling Height



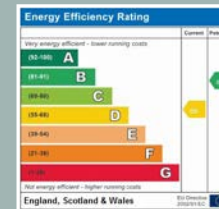
FIRST FLOOR



LOWER GROUND FLOOR



GROUND FLOOR



onTheMarket.com

**NVP**

NICOLAS VAN PATRICK

6-8 MONTEPILIER STREET,  
LONDON SW7 1EZ  
SALES | +44 (0)20 7581 8277  
LETTINGS | +44 (0)20 7590 1200  
info@nicolasvanpatrick.com  
www.nicolasvanpatrick.com