



**STIRLING
ACKROYD**

TO LET

**Bonsoir House, 3
Victorian Grove, Stoke
Newington, N16 8EN**

2,700 to 13,744 sq ft

Bonsoir House offers
newly refurbished office
floors in a converted
warehouse building



VIDEO TOUR

stirlingackroyd.com



Description

The building started out as a textile factory creating garments for Silvo Groups brand - Bonsoir Pyjamas. Elements of the original warehouse features have been retained and enhanced to create a unique blend of the industrial and modern working aesthetic. Offering three floors of open plan studio style accommodation, each floor being flooded with natural light, creating an inspiring creative environment.

In addition there is a small 325 square foot basement, as well as an ancillary self contained building to the rear of 500 square feet, available by separate negotiation.

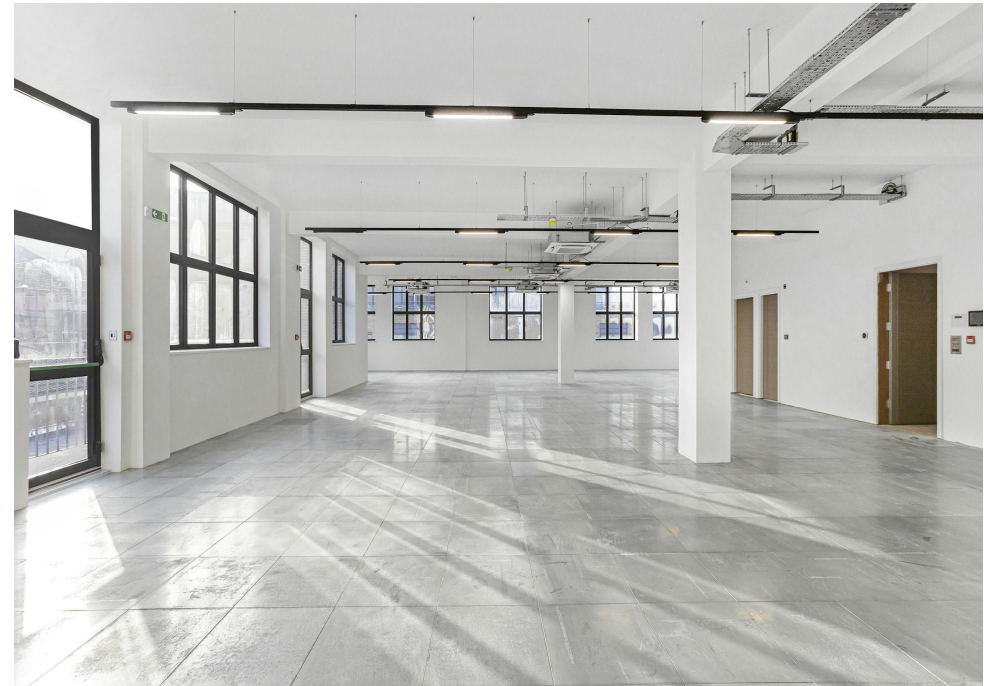
The Landlord is currently splitting the 1st floor to provide 2 x 2500 sq ft units (subject to final measurement) in addition the ground and 2nd floor can also be split.

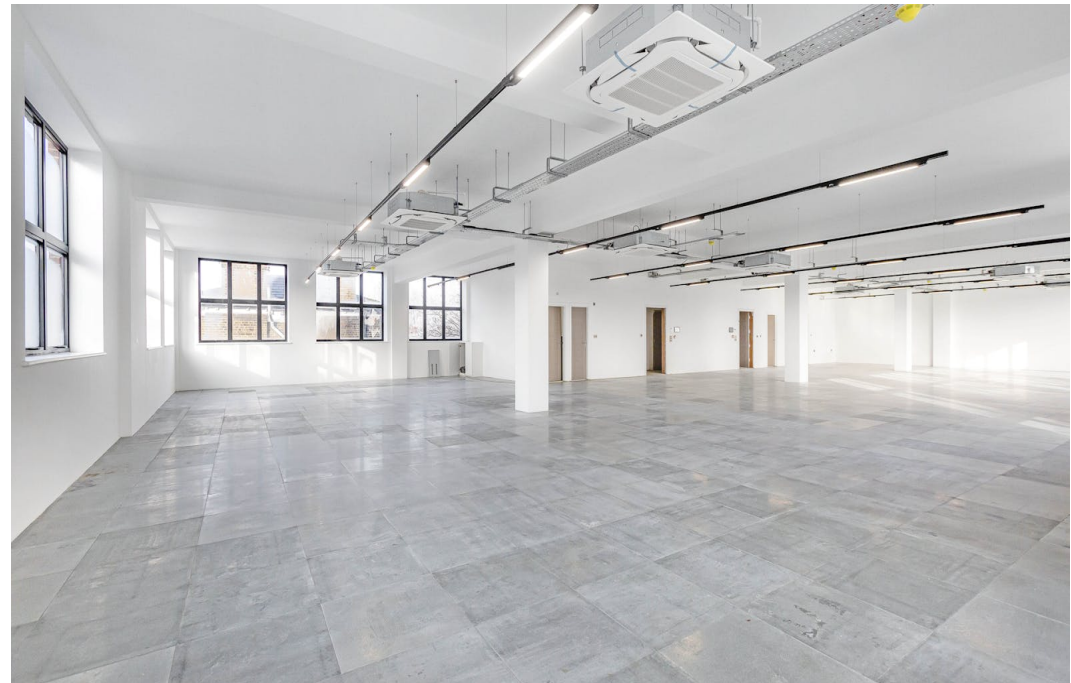
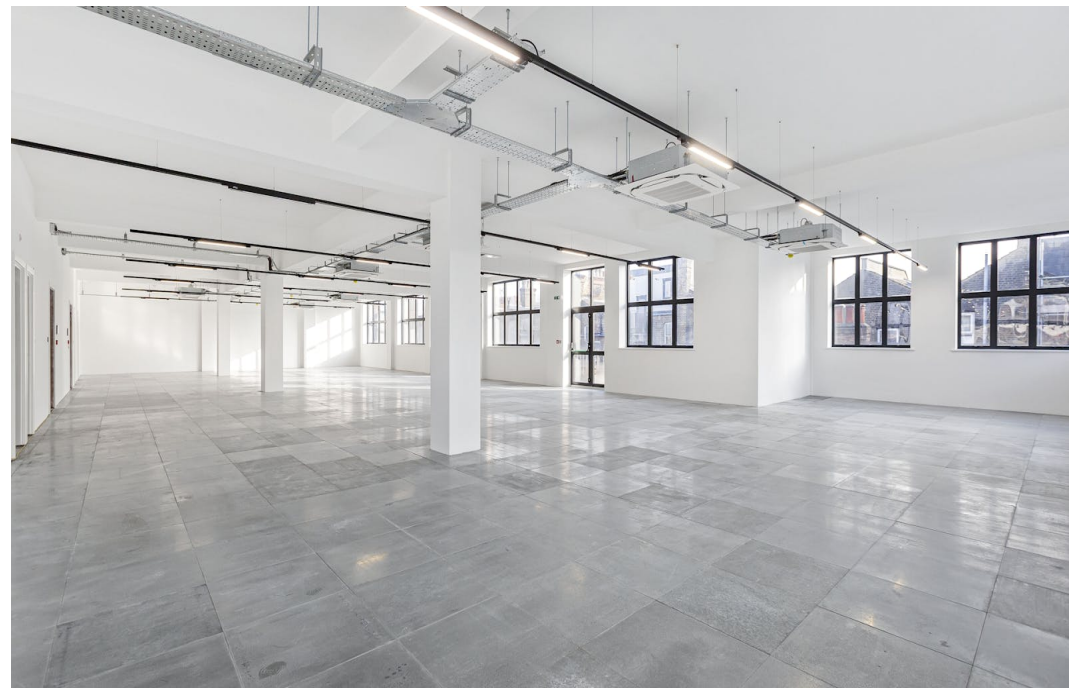
Location

Situated virtually at the corner of Victorian Grove and Stoke Newington High Street, being a short walk to the bars, restaurants and shops of Stoke Newington Church Street, and in a fantastic position to take advantage of the amenities of Stoke Newington, Clissold Park and Stoke Newington Common.

Key points

- Floors range from 325 - 5,482 sq ft
- Floors can be split into two, providing approx 2500 sq ft each
- Three floors of open plan studio space and kitchens to each floor
- Just off Stoke Newington High Street
- New lift and windows
- New air conditioning
- Raised accessible flooring and high ceilings
- Can be let as a whole or on a floor by floor basis





Accommodation

Name	sq ft	sq m	Availability
Basement	325	30.19	Available
Ground	5,304	492.76	Available
1st - front	2,700	250.84	Let
1st - rear	2,700	250.84	Under Offer
2nd	4,915	456.62	Available
Ancillary - available by negotiation	500	46.45	Available

Rents, Rates & Charges

Lease	New Lease
Rent	£15 - £25 per sq ft annual increases by £5psf over the first 3 years
Rates	£10 per sq ft Estimate, not yet reassessed
Service Charge	On application
VAT	On application

EPC	D (79)
-----	--------

or whom they may or may not act, give notice that:(i) these particulars are a general outline only, for the guidance of prospective purchasers or tenants, and do not constitute the whole of any offer or contract; (ii) Stirling Ackroyd cannot guarantee the accuracy of any description, dimensions, references to condition, necessary permissions for use and occupation and other details contained herein and prospective purchasers or tenants must rely on them as statements of fact or representations and must satisfy themselves as to their accuracy; (iii) no employee of Stirling Ackroyd (and their Joint Agency where applicable) has any authority to make or give any representation or warranty or enter into any contract whatever in relation to the property; (iv) rents, prices and premiums quoted in these particulars may be subject to VAT in addition; and (v) Stirling Ackroyd will not be liable, in negligence or otherwise, for any loss arising from the use of these particulars. Generated on 20/11/2024

Viewing & Further Information



Harry Mann
020 3967 0103
hmann@stirlingackroyd.com



Theo Beckford
0203 911 3666
07584253887
Tbeckford@stirlingackroyd.com

Joint Agents

Christo & Co (Joint Agent)