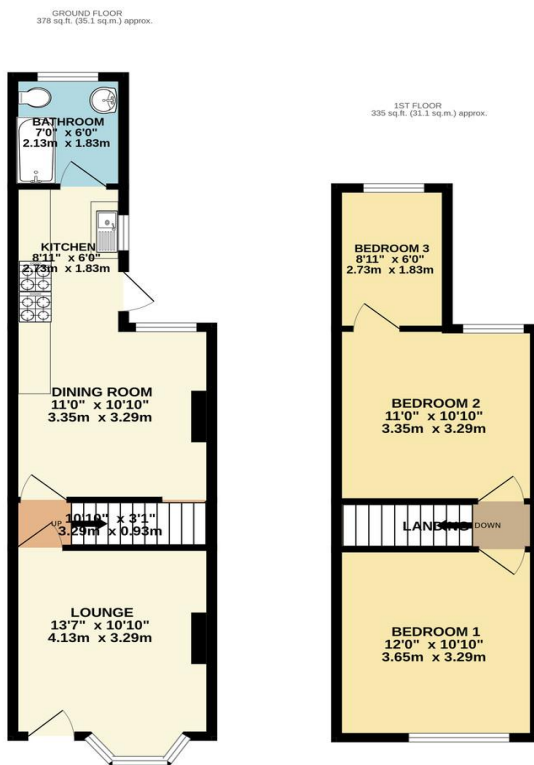




FOR SALE

2 Bed Mid Terraced House in Regent Street, Oadby, LE2 4DN
Offers Over £230,000

Situated in the highly desirable location of Oadby this two bedroom palisaded mid terrace house is presented to a high standard throughout. The accommodation comprises lounge, open plan kitchen and dining area, ground floor bathroom, landing, two bedrooms, office/study off bedroom one, rear garden. Ideal location near to shops, bus routes and the main A6.



TOTAL FLOOR AREA: 712 sq.ft. (66.2 sq.m.) approx.
Whilst every attempt has been made to ensure the accuracy of the floorplan contained here, measurements of doors, windows, rooms and any other items are approximate and no responsibility is taken for any error, omission or mis-statement. This plan is for illustrative purposes only and should be used as such by any prospective purchaser. The services, systems and appliances shown have not been tested and no guarantee as to their operability or efficiency can be given.
Made with Metropix ©2023

Energy Efficiency Rating		Current	Potential
Very energy efficient - lower running costs			
(92-100)	A		
(81-91)	B		83
(69-80)	C		
(55-68)	D	80	
(39-54)	E		
(21-38)	F		
(1-20)	G		
Not energy efficient - higher running costs			
England, Scotland & Wales		EU Directive 2002/91/EC	

- Bay Fronted Terrace
- Downstairs Bathroom
- Two Bedrooms
- Well Presented Throughout
- Highly Sought After Location
- Study Space Off Bedroom Two
- Landscaped Garden
- Open Plan Kitchen / Diner

Agents Note: Whilst every care has been taken to prepare these sales particulars, they are for guidance purposes only. All measurements are approximate and for general guidance purposes only and whilst every care has been taken to ensure their accuracy, they should not be relied upon and potential buyers are advised to recheck the measurements.

