



♥ 2 Bedroom Second Floor Apartment **Asking Price Of £135,000**
7 Reddings House, 10 Twickenham Close, Swindon, Wiltshire, SN3 3FP

mcfarlane
property.com

2 Bedroom Second Floor Apartment Swindon East

- TWO BEDROOMS
- NO ONWARD CHAIN
- BALCONY
- LOVELY VIEWS

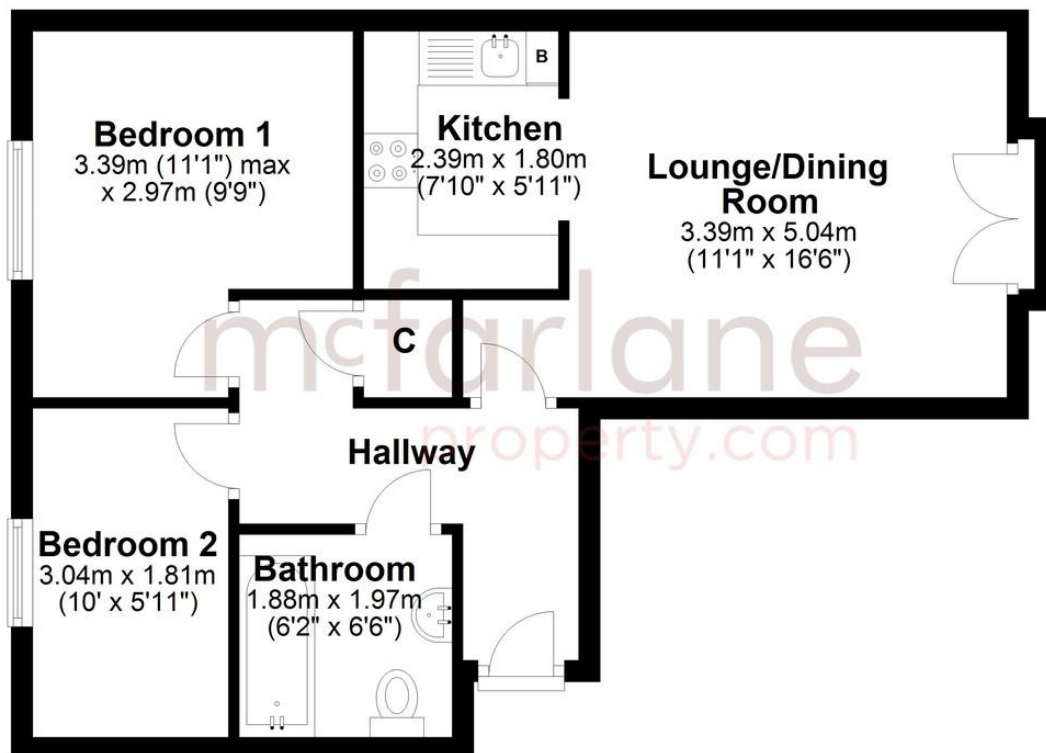
McFarlane are pleased to offer this well presented, two double bedroom second floor apartment located in the popular location of Twickenham Close, East Swindon. Overlooking a green playing field to one side from a Juliet balcony whilst being situated close to local amenities to the Greenbridge Retail Park. The accommodation offers a living / dining room with Juliet balcony, fitted kitchen, two good size bedrooms and family bathroom suite. The property further benefits from gas central heating, allocated parking and communal areas. Offered to the market with NO ONWARD CHAIN.





Second Floor

Approx. 46.0 sq. metres (495.4 sq. feet)



Total area: approx. 46.0 sq. metres (495.4 sq. feet)

We 
where you
LIVE

Our team are friendly, experienced and are all local. They know it better than they do their own living rooms and can help you find what you're looking for because **we love where we live.**

We would be delighted to show you around this property.

**Because every home
needs a personal touch.**

**If you would like to view this
property then please get in touch.**

📞 01793 296600

✉ swindon@mcfarlaneproperty.com

mcfarlaneproperty.com

mcfarlane
property.com

Cricklade.

102 High Street
Cricklade SN6 6AA

📞 01793 751044

Marlborough.

106 High Street
Marlborough SN8 1LT

📞 01672 514380

Old Town.

28-30 Wood Street
Swindon SN1 4AB

📞 01793 296880

Swindon.

The Village Centre,
Redhouse SN25 2FW

📞 01793 296600

Agents Note: Whilst every care has been taken to prepare these sales particulars, they are for guidance purposes only. All measurements are approximate and are for general guidance purposes only and whilst every care has been taken to ensure their accuracy, they should not be relied upon and potential buyers are advised to recheck the measurements