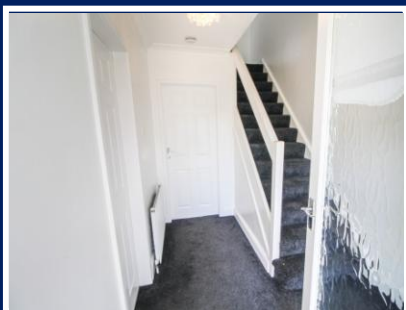




Willow Crescent, Blyth
£625 pcm



LENNON
PROPERTIES
SALES | LETTINGS | MANAGEMENT | COMMERCIAL



Willow Crescent, Blyth

We are pleased to welcome to the market this stunning two bedroom terraced house situated on Willow Crescent, Newsham in Blyth. The property comprises; entrance porch, lounge, fabulous refitted kitchen, utility room with two exits to the rear garden. To the first floor there are two bedrooms and lovely refitted shower room. The property is available to view now and we urge a high level of interest so would urge all internal inspections to take place. To arrange your viewing please call our office.



LOUNGE 17' 7" x 14' 11" (5.37m x 4.56m)

KITCHEN 11' 2" x 7' 10" (3.41m x 2.41m)

UTILITY 10' 0" x 4' 11" (3.06m x 1.52m)

BEDROOM ONE 14' 11" x 10' 0" (4.55m x 3.06m)

BEDROOM TWO 16' 0" x 8' 8" (4.88m x 2.65m)

BATHROOM 8' 5" x 5' 9" (2.57m x 1.77m)



These particulars are intended to give a fair and reliable description of the property but no responsibility for any inaccuracy or error can be accepted and do not constitute an offer or contract. We have not tested any services or appliances (including central heating if fitted) referred to in these particulars and the purchasers are advised to satisfy themselves as to the working order and condition. If a property is unoccupied at any time there may be reconnection charges for any switched off / disconnected or drained services or appliances – All measurements are approximate. MONEY LAUNDERING REGULATIONS 2003 intending purchasers will be asked to produce identification and proof of financial status when an offer is received. We would ask for your co-operation in order that there will be no delay in agreeing the sale.

9 Regent Street, Blyth, NE24 1LQ

01670 719600

Email: blyth@lennonproperties.co.uk

www.lennonproperties.co.uk

