



18 Havant Road, North End

Portsmouth

Offers in Region of £235,000

 chinneckshaw



18 Havant Road

North End, Portsmouth

Located in the heart of Portsmouth is this lovely three bedroomed house benefits from no onward chain. Ready to move in, the house has neutral décor throughout perfect for allowing a new owner to personalise easily.

From the front door you have access via an entrance vestibule to a large Open Plan Lounge Dining Room. We love the sheer size of this room which is not only light and bright but gives you lots of furniture layout options too. From here you'll see an inner hallway with stairs to the first floor and storage

The Kitchen comes next and offers a range of fitted wall and base cabinets with plenty of space and plumbing for appliances. There is a small rear lobby with access into the garden plus access into the Bathroom. This room features a modern white suite with a P shape bath and shower.

Upstairs are three large bedrooms so plenty of space for a growing family!

Outside the east facing garden is a good size and has the potential to be a lovely outdoor entertaining space ready to enjoy in the summer months.

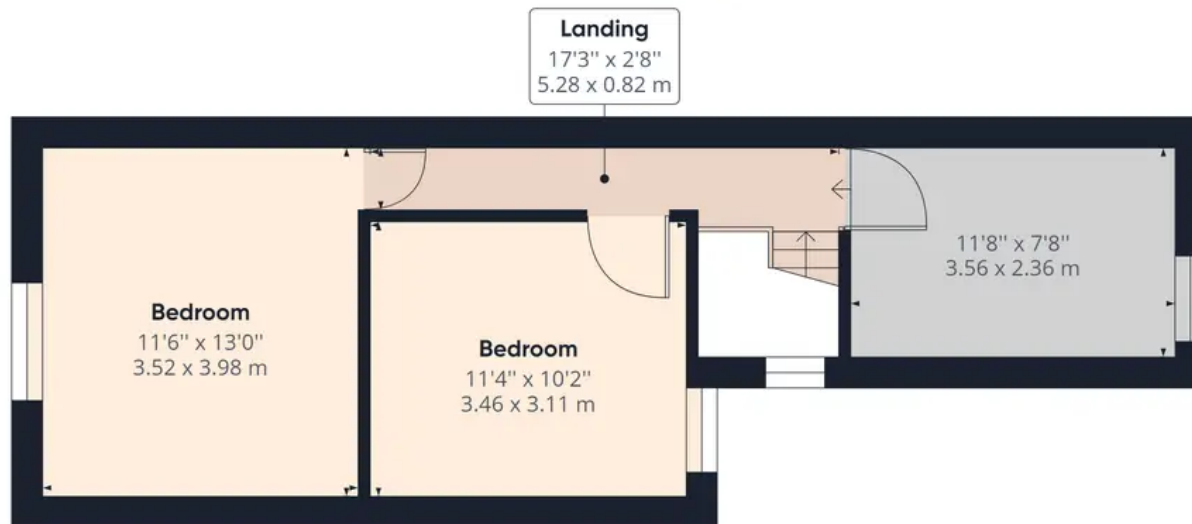
Council Tax band: B

Tenure: Freehold





Ground Floor



Floor 1

Approximate total area⁽¹⁾

925.37 ft²

85.97 m²

Reduced headroom

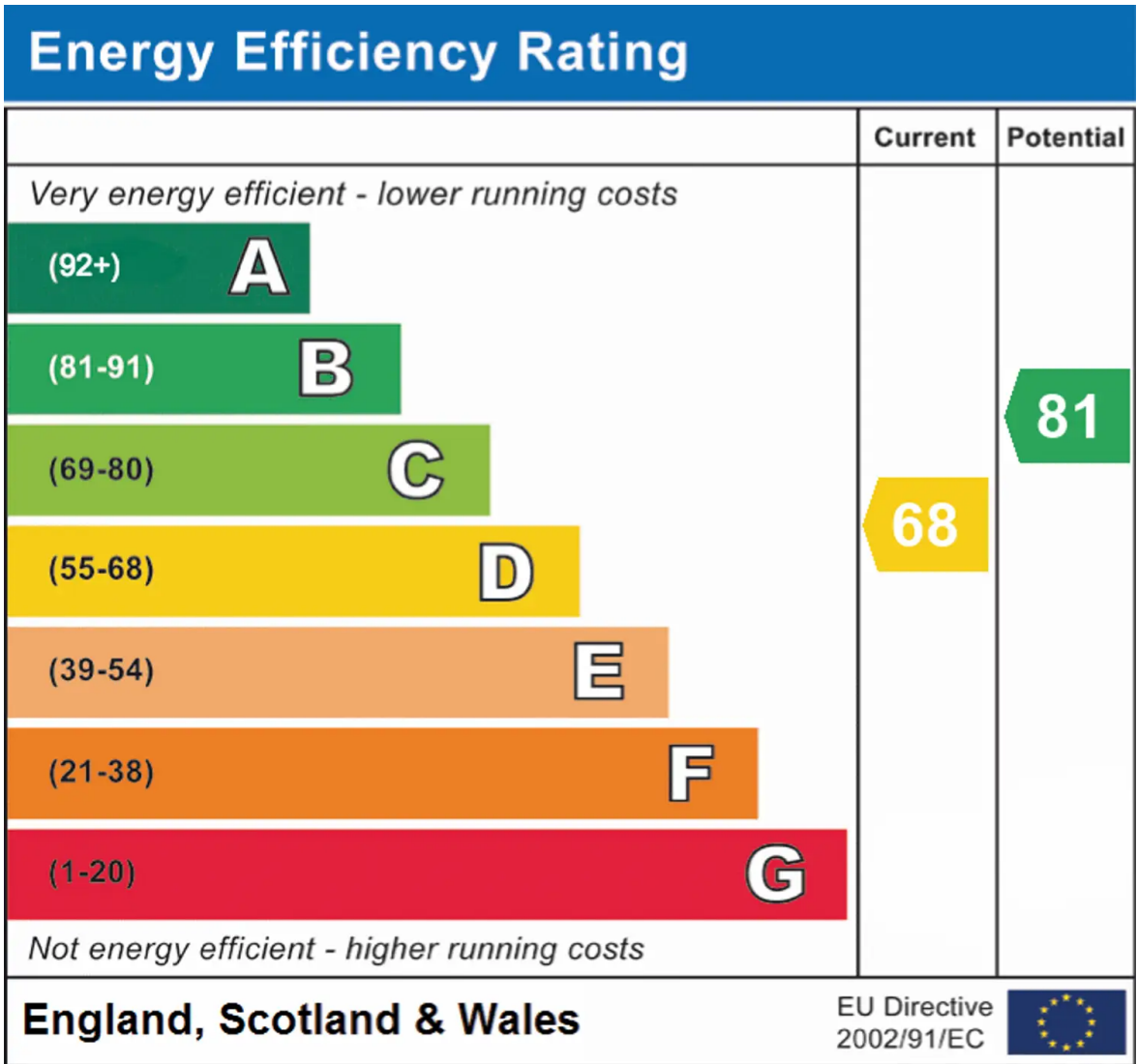
6.86 ft²

0.64 m²

(1) Excluding balconies and terraces

⌊ Reduced headroom
(below 1.5m/4.92ft)

While every attempt has been made to ensure accuracy, all measurements are approximate, not to scale. This floor plan is for illustrative purposes only.



Chinneck Shaw

Bridge House, Milton Road, Portsmouth – PO3 6AN

023 9282 6731

hello@chinneckshaw.co.uk

www.chinneckshaw.co.uk/

Chinneck Shaw, Bridge House, Milton Road, PO3 6AN Consumer Protection from Unfair Trading Regulations 2008: These details are for guidance only and complete accuracy cannot be guaranteed. If there is any point which is of particular importance, verification should be obtained. The do not constitute a contract or part of a contract. All measurements are approximate. No guarantee can be given with regard to planning permissions or fitness for purpose. No apparatus, equipment, fixture or fitting has been tested. Items shown in the photographs are NOT necessarily included. Interested Parties are advised to check availability and make an appointment to view before travelling to see a property.