



BRECKENRIDGE LETTINGS

LETTINGS

Drift Road, Windsor SL4



A truly stunning 2 bedroom ground floor apartment offering contemporary and spacious accommodation with own private garden. The property is in close proximity to both Ascot High Street and Racecourse as well as Windsor and Eton. Available for short term lets by separate negotiation.

Available - 01/09/2023

£4950 Per Calander Month

Fully Furnished



BRECKENRIDGE LETTINGS

- Stunning Ground Floor Apartment
- Two Double Bedroom Suites
- Open Plan Living
- Private Garden
- Parking 2 Cars
- Gated Development





Energy Efficiency Rating		Environmental Impact (CO ₂) Rating			
	Current	Potential		Current	Potential
Very energy efficient - lower running costs			Very environmentally friendly - lower CO ₂ emissions		
(92-100) A			(90-100) A		
(81-91) B			(81-91) B		
(69-80) C			(69-80) C		
(55-68) D			(55-68) D		
(39-54) E			(39-54) E		
(21-38) F			(21-38) F		
(1-20) G			(1-20) G		
Not energy efficient - higher running costs			Not environmentally friendly - higher CO ₂ emissions		
EU Directive 2002/91/EC			EU Directive 2002/91/EC		

All viewings are strictly by appointment or by e-mail.

Please be advised that any information supplied by the agent is given without any warranty and all negotiations are on a subject to contract basis until a tenancy agreement has been engrossed. Satisfactory references are always required before a tenancy agreement is signed. In addition to the rental and security deposit there is a charge for the tenancy agreement and an Inventory/Check-in procedure.

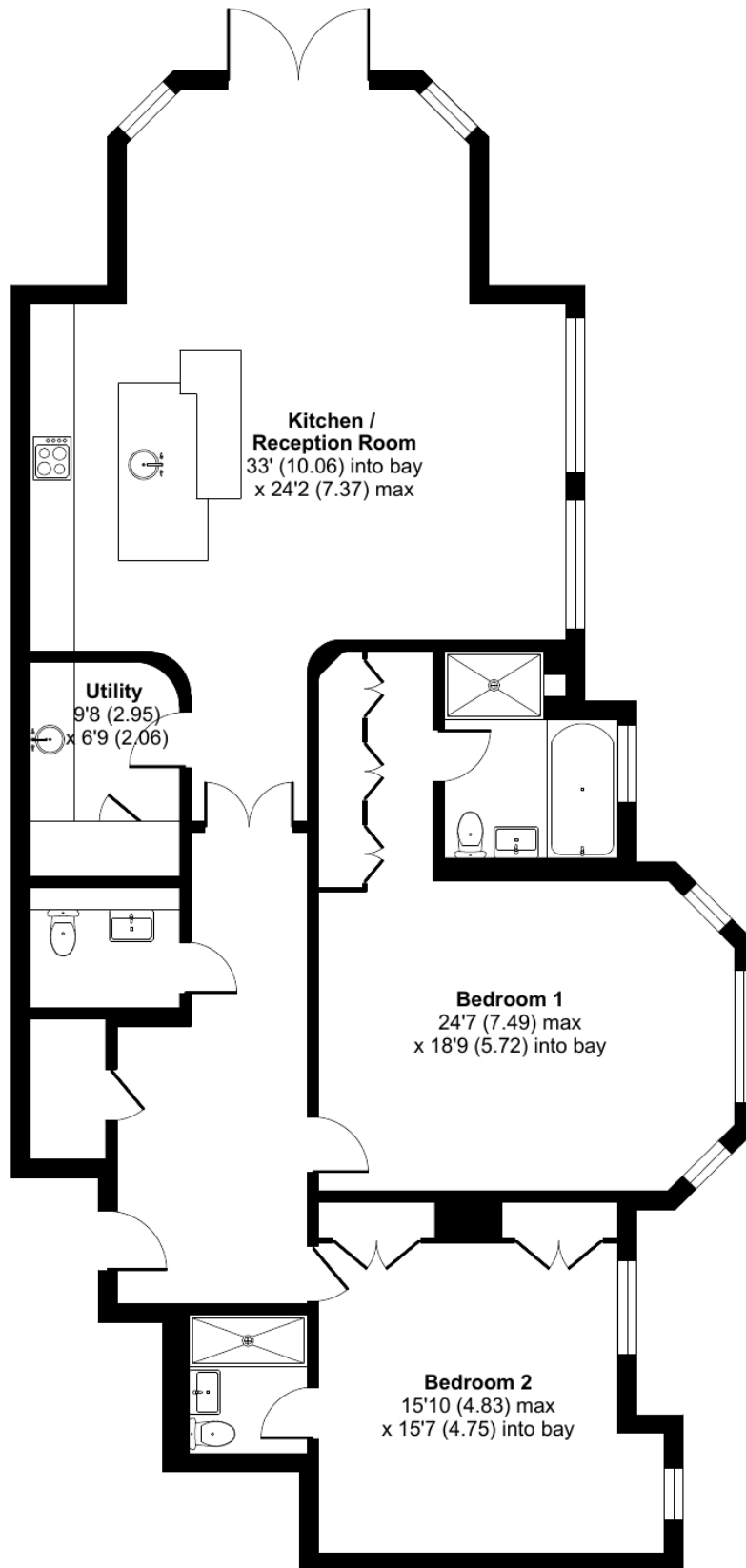
These particulars or any other media, printed or downloaded, do not form part of any contract and must not be relied upon. All measurements mentioned within the particulars are approximate and are given as a guide only.

Email: contact.us@breckenridge-lettings.co.uk

Orchard Lea, Drift Road, Winkfield, Windsor, SL4

Approximate Area = 1538 sq ft / 142.8 sq m

For identification only - Not to scale



GROUND FLOOR



Floor plan produced in accordance with RICS Property Measurement Standards incorporating International Property Measurement Standards (IPMS2 Residential). © nichecom 2023. Produced for Breckenridge Lettings Ltd. REF: 987315