

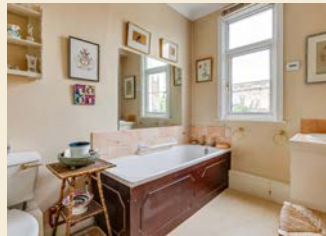


BROMPTON SQUARE



KNIGHTSBRIDGE SW7

Now in need of modernisation and spanning over two floors, this bright two-bedroom flat is situated on the third floor with lift. This flat benefits from excellent light and proportions with fantastic views over the gardens square to the front and far-reaching views over the Brompton Oratory to the rear. The flat also has access to the garden square.



Brompton Square is situated just off the Brompton Road, moments from Harrods and all the bars, restaurants and museums the area has to offer. The nearest Underground stations are South Kensington and Knightsbridge.

FEATURES

- Two Double Bedrooms ■ Walk In Wardrobe
- Bathroom ■ Reception Room
- Dining Room ■ Kitchen
- Access to Communal Gardens

Price: £1,195,000
 Tenure: Leasehold With
 103 Years Remaining
 Service Charge:
 £2,935.70 per annum

These details have been prepared for general guidance only and should not be relied upon by prospective purchaser/tenants who before proceeding must check and otherwise satisfy themselves as to the property and the nature, state and availability of any facility or service.



Brochure by TwentyOneFifty Tel: 020 8778 2150



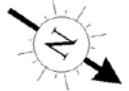
NICOLAS VAN PATRICK

6-8 MONTPELIER STREET,
 LONDON SW7 1EZ
 SALES | +44 (0)20 7581 8277
 LETTINGS | +44 (0)20 7590 1200

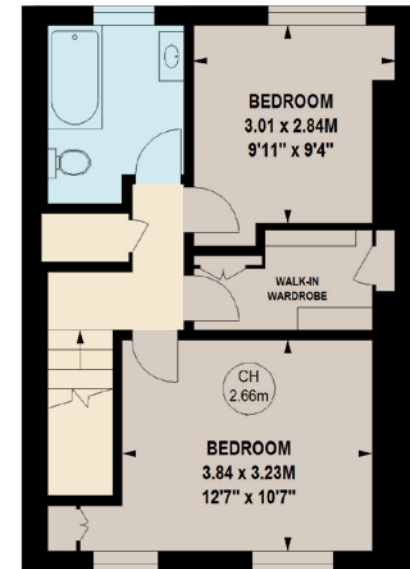
info@nicolasvanpatrick.com
 www.nicolasvanpatrick.com

APPROXIMATE GROSS INTERNAL AREA

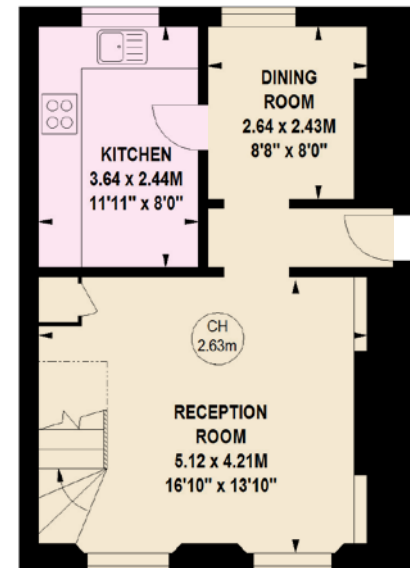
893 sq ft / 83.96 sq m



Key: CH - Ceiling Height



FOURTH FLOOR



THIRD FLOOR