

# Love Homes



92 Steppingley Road, Flitwick, Bedfordshire, MK45 1AR

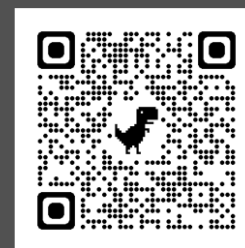


Available chain free, this detached 1930's built bungalow is situated on a generous plot overlooking open countryside and benefits from a mature and established 110ft rear garden. The property enjoys generous size rooms and high ceilings throughout and offers excellent scope to further improve and extend subject to planning consent.



This property is presented by Duncan Stead - a Love Homes property expert with over 25 years' experience.

Find out more about this property by scanning the QR code.



0.5m

Tenure: Freehold



2



2

Council Tax: E



2



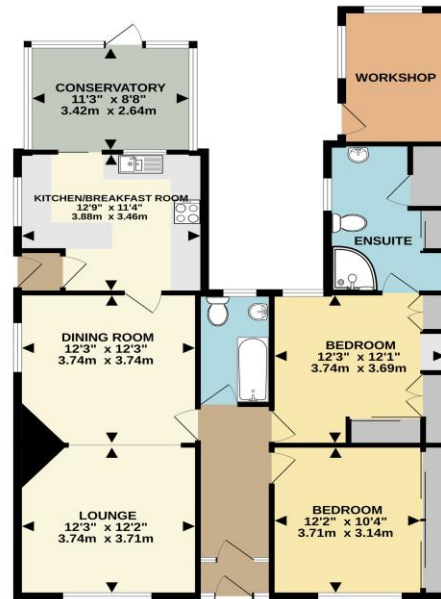




"A much-loved family home since 1976, the rooms are well proportioned and welcoming with high ceilings, original features and plenty of light. The garden is a favourite part of the property - it's lovely and private, with patio, lawns & space to grow fruit & vegetables. Flitwick is a really nice place to live, it's got everything you'd need in a small town with all of it easily accessible from the bungalow. As it's located on the edge of town, there are lots of countryside footpaths virtually on the doorstep as well as being just a couple of minutes' walk from the Leisure and Rufus Centre's".

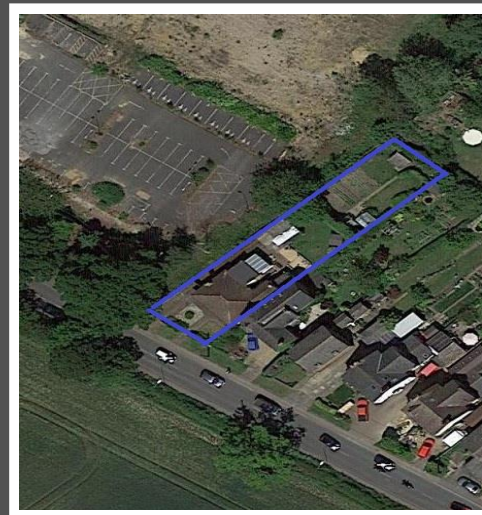


GROUND FLOOR  
1130 sq.ft. (105.0 sq.m.) approx.



TOTAL FLOOR AREA: 1130 sq.ft. (105.0 sq.m.) approx.  
Drawn by Love Homes for illustrative purposes only. Measurements and areas shown are approximate. Plans valid March 2022.

Score	Energy rating	Current	Potential
92+	A		
81-91	B		
69-80	C		80 C
55-68	D	56 D	
39-54	E		
21-38	F		
1-20	G		



These particulars are set out as a general outline in accordance with the Property Misdescriptions Act (1991) only for the guidance of intending purchasers or lessees, and do not constitute any part of an offer or contract. Details are given without any responsibility, and any intending purchasers, lessees or third parties should not rely on them as statements or representations of fact but must satisfy themselves by inspection or otherwise as to the correctness of each of them. We have not carried out a structural survey and the services, appliances and specific fittings have not been tested. All photographs, measurements, floor plans and distances referred to are given as a guide only and should not be relied upon for the purchase of carpets or any other fixtures or fittings. Gardens, roof terraces, balconies and communal gardens as well as tenure and lease details cannot have their accuracy guaranteed for intending purchasers. Lease details, service ground rent (where applicable) are given as a guide only and should be checked and confirmed by your solicitor prior to exchange of contracts. No person in the employment of Love Homes has any authority to make any representation or warranty whatever in relation to this property. Purchase prices, rents or other prices quoted are correct at the date of publication and, unless otherwise stated, are exclusive of VAT. We retain the copyright in all advertising material used to market this Property. All information is as advised by the seller and subject to change. Council tax bands can be subject to change by the local council.

5 The Russell Centre, Coniston Road, Flitwick, MK45 1QY  
Tel: 01525 713111

Email: [flitwick@lovehomes.uk](mailto:flitwick@lovehomes.uk)

[www.lovehomes.uk](http://www.lovehomes.uk)



**Love Homes**