



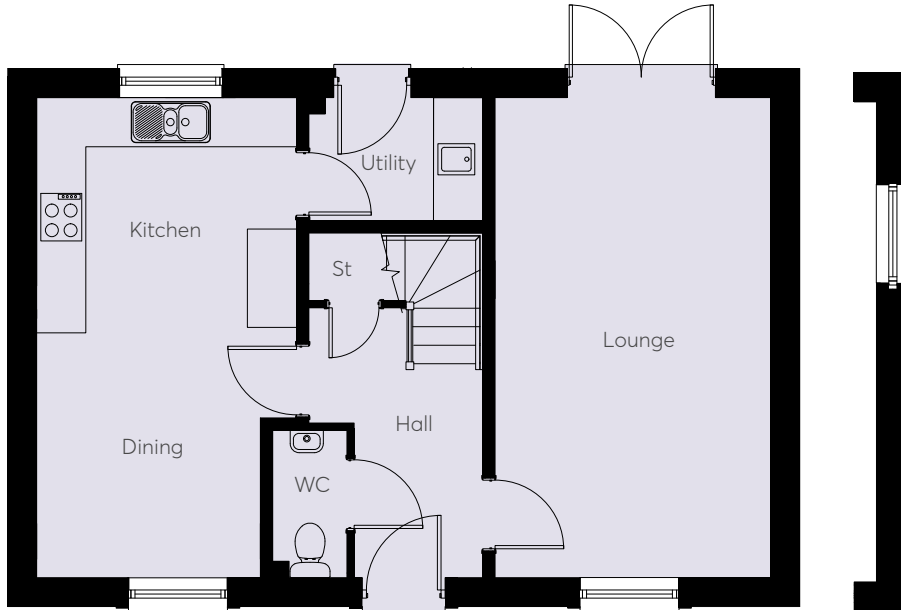
THE  
**SHIPSTON**  
A four bedroom detached home



**BLUEBELL**  
HOMES

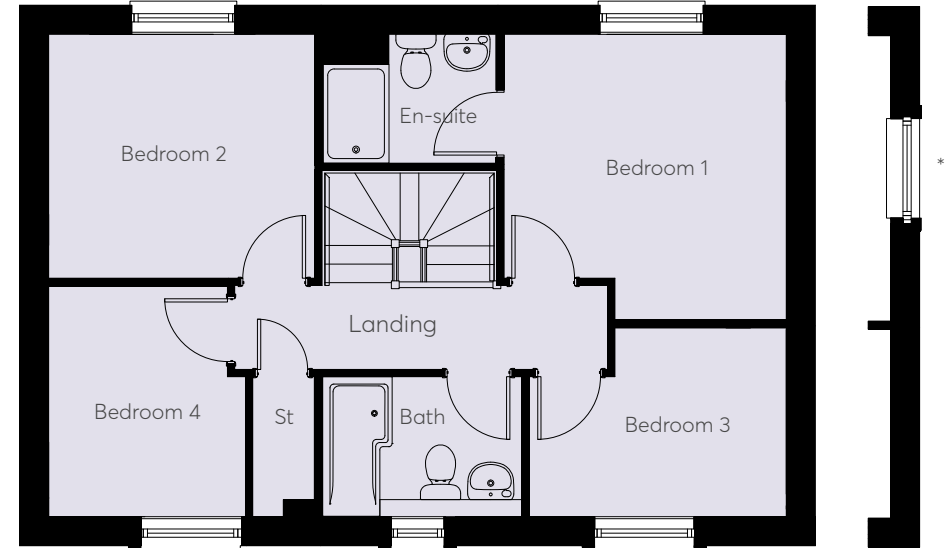
# THE SHIPSTON

A four bedroom detached home



## Ground Floor

Kitchen	3.17m x 2.87m	10'5" x 9'5"
Dining	2.99m x 2.73m	9'10" x 9'0"
Lounge	5.88m x 3.37m	19'4" x 11'1"



## First Floor

Bedroom 1	3.47m x 3.46m	11'5" x 11'4"
Bedroom 2	3.23m x 2.95m	10'7" x 9'8"
Bedroom 3	3.11m x 2.29m	10'3" x 7'6"
Bedroom 4	2.80m x 2.39m	9'2" x 7'10"

Elevational treatments may vary by plot. Plots 172 & 175 have side windows as indicated by \*

**CONSUMER  
CODE FOR  
HOME BUILDERS**

[www.consumercode.co.uk](http://www.consumercode.co.uk)

These images are designed to give an impression of the development and our housetypes - they may not reflect a specific plot and do not form part of any contract. Final finishes, landscaping and detail will vary. This information has been provided in good faith, however all layouts and measurements are approximate only. Dimensions are taken to the maximum. Some house types include areas of reduced headroom. Bathroom and kitchen layouts are indicative only and designs may change due to our process of continuous product development. Images used in marketing materials may be computer generated or photography of previous developments.



**BLUEBELL  
HOMES**