





£1,555 pcm

Wisteria Place, Old Main Road, Bulcote, Nottingham, NG14 5GS

EPC Rating B





Modern apartment located within the popular McCarthy & Stone independent retirement living complex in Bulcote. The development is for the over 60's, benefits from a guest suite, 24 hour emergency call system, pure air ventilation, secure door entry system, a lift, mobility scooter store/charging room, a communal lounge and gardens. In brief, the first floor accommodation comprises an entrance hall, utility store cupboard with washer dryer, modern shower room with a walk in shower, lounge diner, double bedroom with walk-in wardrobe and modern fitted kitchen with fitted oven, hob, extractor and integrated fridge freezer. Bulcote is a picturesque village with country walks and in close proximity to the amenities of Burton Joyce. Amenities include a Co-op, Post Office, Public Houses/Restaurants, Doctors, Chemist, Dentist and a Primary School.

Deposit £1,794.23

Initial 6 months fixed term Shorthold Tenancy

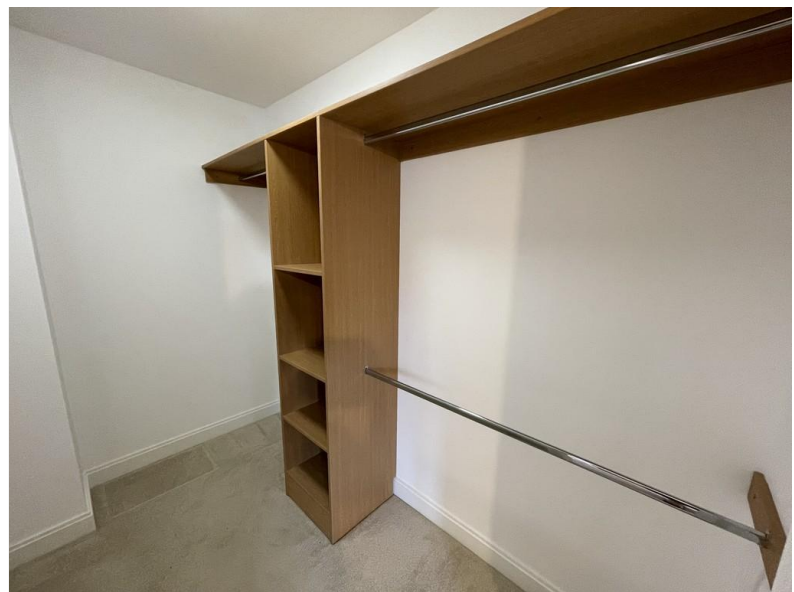
KITCHEN 7' 1" x 7' 11" (2.16m x 2.42m)

LIVING ROOM 20' 0" x 10' 2" (6.11m x 3.12m)

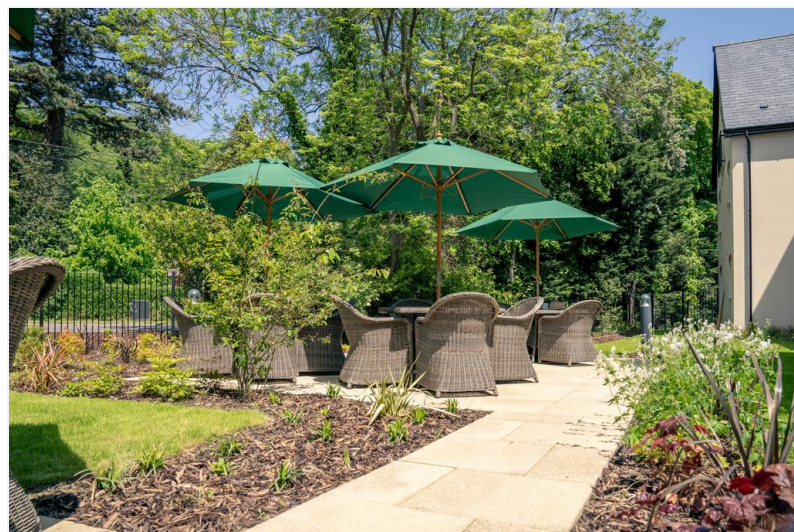
SHOWER ROOM 7' 1" x 6' 7" (2.18m x 2.03m)

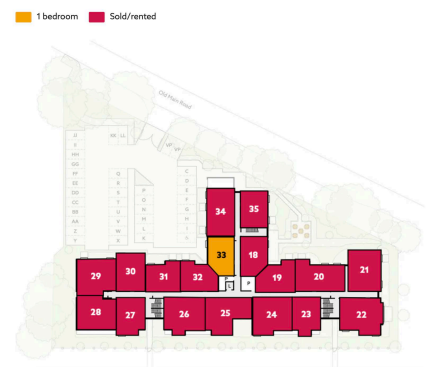
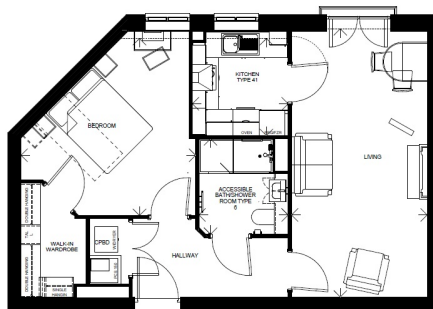
BEDROOM 13' 7" x 13' 1" maximum measurements (4.16m x 3.99m)

WALK-IN WARDROBE 8' 8" x 4' 11" maximum measurements (2.66m x 1.52m)



Score	Energy rating	Current	Potential
92+	A		
81-91	B	81 B	81 B
69-80	C		
55-68	D		
39-54	E		
21-38	F		
1-20	G		





COUNCIL TAX BAND: B

LOCAL AUTHORITY: Newark and Sherwood District Council

#### SECURITY DEPOSIT

Set at a maximum of five weeks rent. This covers damages or defaults on the part of the tenant during the tenancy.

#### HOLDING DEPOSIT

As an agency we are not charging tenants a holding deposit.

20 Main Road  
Gedling  
Nottingham  
NG4 3HP

Contact Us  
[www.lesleygreaves.co.uk](http://www.lesleygreaves.co.uk)  
[lettings@lesleygreaves.co.uk](mailto:lettings@lesleygreaves.co.uk)  
0115 987 7337

Agents Note: Whilst every care has been taken to prepare these particulars, they are for guidance purposes only. All measurements are approximate and for general guidance purposes only and whilst every care has been taken to ensure their accuracy, they should not be relied upon and potential buyers/tenants are advised to recheck the measurements.

