



Columbia Way, Grove

Guide Price £300,000

Wantage

Simpsons

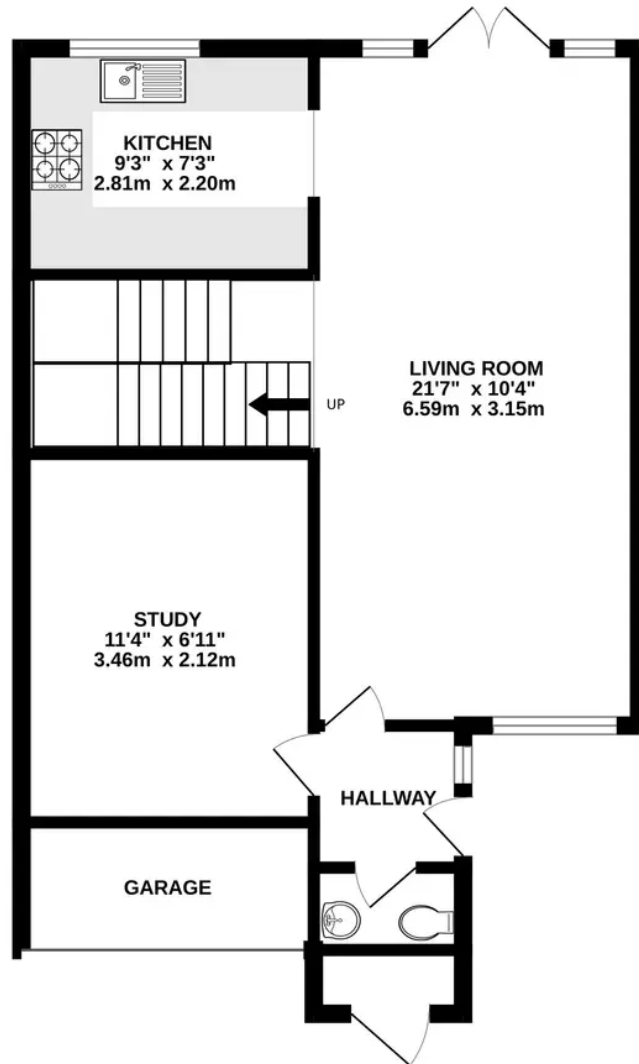
The Proactive Agent



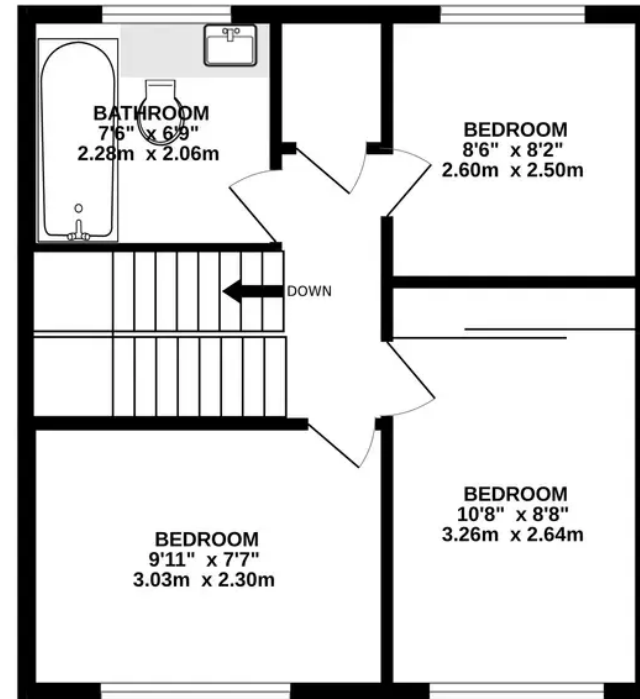
SCAN THE
QR CODE
FOR DETAILS



GROUND FLOOR
535 sq.ft. (49.7 sq.m.) approx.



1ST FLOOR
425 sq.ft. (39.5 sq.m.) approx.



TOTAL FLOOR AREA : 960 sq.ft. (89.2 sq.m.) approx.

Whilst every attempt has been made to ensure the accuracy of the floorplan contained here, measurements of doors, windows, rooms and any other items are approximate and no responsibility is taken for any error, omission or mis-statement. This plan is for illustrative purposes only and should be used as such by any prospective purchaser. The services, systems and appliances shown have not been tested and no guarantee as to their operability or efficiency can be given.
Made with Metropix ©2023

Columbia Way

Grove, Wantage

A three bedroom family home in Grove with a modern kitchen and bathroom and extensive driveway parking.

Council Tax band: C

Tenure: Freehold

- Well kept garden with secondary gated access from the rear.
- Professionally installed, top quality synthetic lawn.
- Open plan ground floor accommodation.
- Converted garage creating a play room or home office.
- Downstairs WC.



SCAN THE
QR CODE
TO BOOK
YOUR VIEWING



