



LAWRENCE RAND

14 St. Martins Close, Watford
£315,000



14 St. Martins Close

Watford, Watford

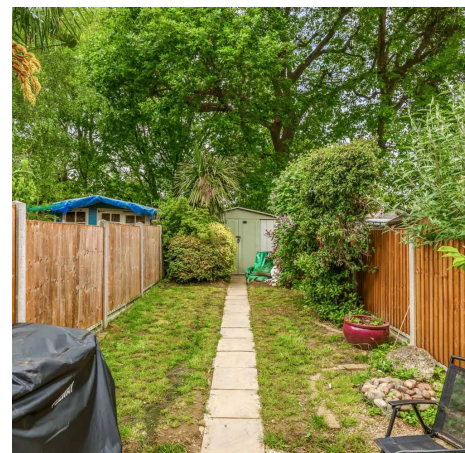
Situated in a cul-de-sac development is this one bedroom freehold starter home. The property benefits from double glazing, modern kitchen and a good size rear garden.

The ground floor has an entrance lobby, a good size living room with direct access out to the rear garden. The modern kitchen is fitted with units and has an integrated oven & hob and appliance space. Upstairs, the landing gives access to the bathroom and the good size bedroom. Outside, there is a good size rear garden that is mainly lawned and has a patio area and there is parking to the front.

St. Martins Close is a popular modern development situated within easy reach of local shops, leisure centre, supermarket and Carpenders Park overground station, with direct access into London.

Local Authority: Three Rivers

Council Tax Band: C (ref: 106008520140)



- Freehold house
- Large Rear Garden
- Cul-de-sac Development
- Parking
- Fitted Kitchen
- Large Double Bedroom

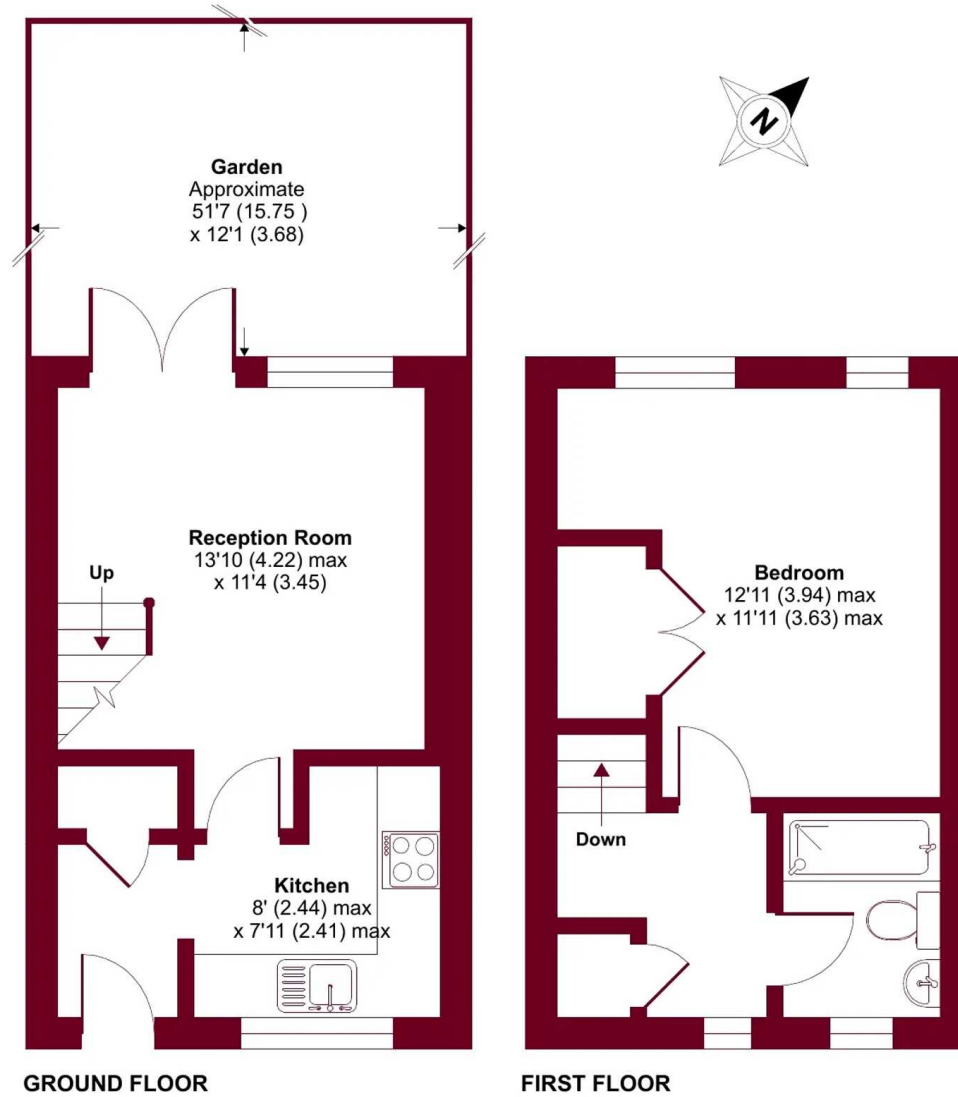




St. Martins Close, Watford, WD19

Approximate Area = 480 sq ft / 44.5 sq m

For identification only - Not to scale





Lawrence Rand

Lawrence Rand, 106 Victoria Road - HA4 0AL

01895 632211

Info@lawrence-rand.co.uk

www.lawrence-rand.co.uk/



LAWRENCE RAND