



LAWRENCE RAND

10 Dulverton Road, Ruislip
£535,000



10 Dulverton Road

Ruislip, Ruislip

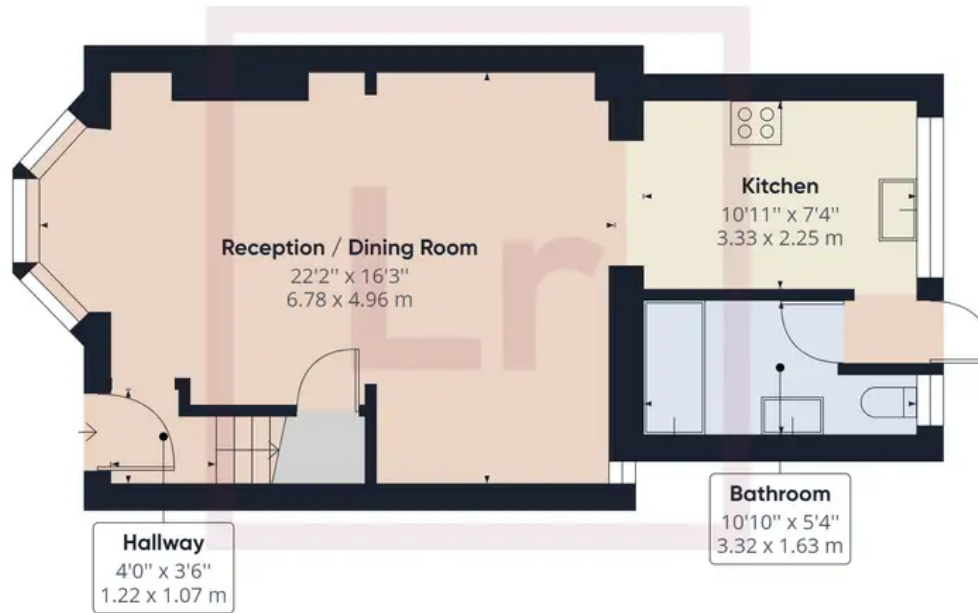
A stunning three bedroom mid-terraced house situated in a popular residential road, conveniently located close to Ruislip Manor's choice of amenities...

Tenure: Freehold

- • Well Maintained Garden
- • Three Bedrooms
- • Off Street Parking
- • Fabulous Condition
- • Great Transport Links
- • Extended Accommodation
- • Quick & Easy Access to Schools & Station





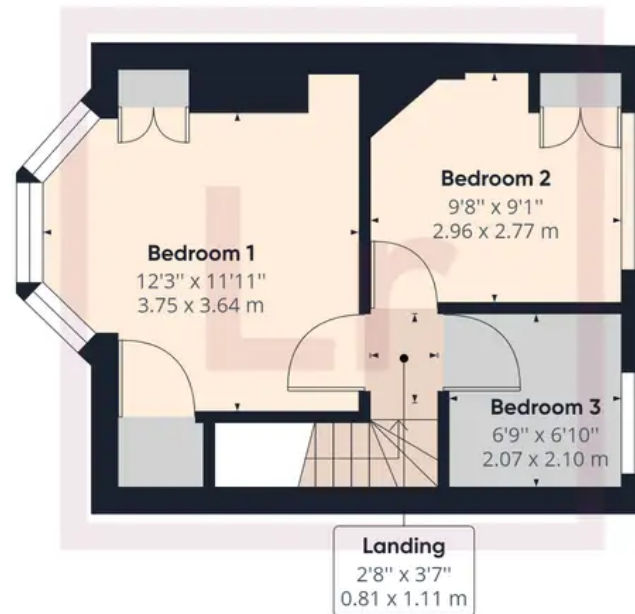


Ground Floor Building 1

Approximate total area⁽¹⁾

766.28 ft²

71.19 m²



Floor 1 Building 1

(1) Excluding balconies and terraces

While every attempt has been made to ensure accuracy, all measurements are approximate, not to scale. This floor plan is for illustrative purposes only.

GIRAFFE360



Lawrence Rand

Lawrence Rand, 106 Victoria Road - HA4 0AL

01895 632211

Info@lawrence-rand.co.uk

www.lawrence-rand.co.uk/



LAWRENCE RAND