



LAWRENCE RAND

100 Lime Grove, Ruislip
£425,000



100 Lime Grove

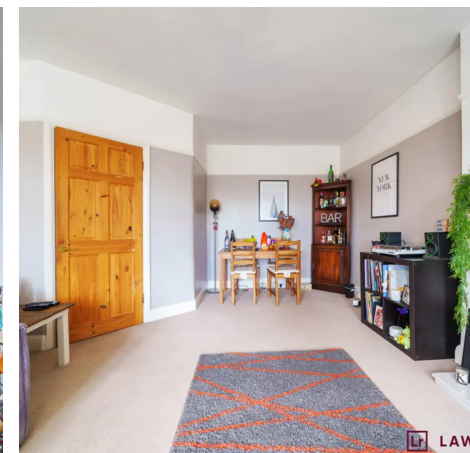
Ruislip, Ruislip

We recommend a viewing of this maisonette to fully appreciate the quality and size on offer. The property has a private entrance & private garden, two large double bedrooms, modern kitchen, share of freehold with a long lease of 142 years and no onward chain.

Council Tax band: D

Tenure: Share of Freehold

- First Floor Maisonette
- Share of Freehold
- Private Entrance
- Large Private Rear Garden
- 2 Double Bedrooms
- Close to Station & Shops
- NO ONWARD CHAIN





Lr LAWRENCE RAN



Lr LAWRENCE RAN



Lr LAWRENCE RAN



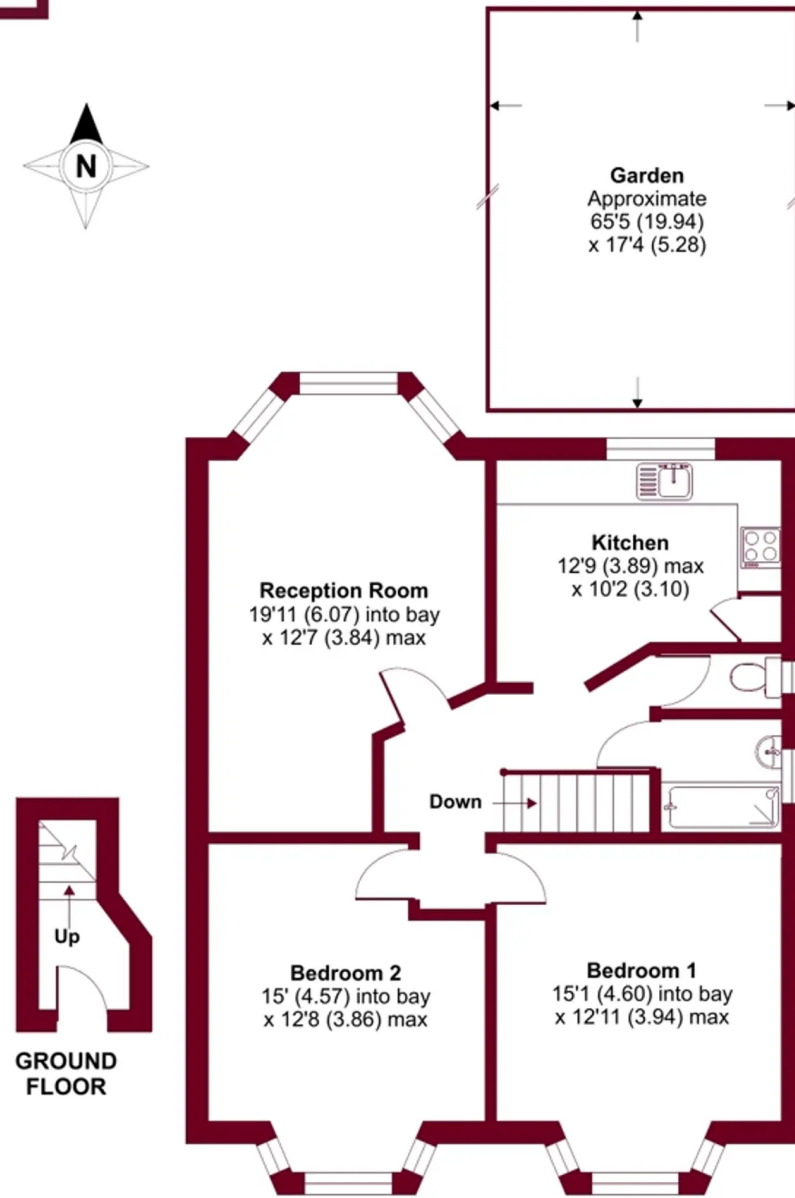
Lr LAWRENCE RAN



Ruislip, Middlesex, HA4

Approximate Area = 868 sq ft / 80.6 sq m

For identification only - Not to scale



Floor plan produced in accordance with RICS Property Measurement Standards incorporating International Property Measurement Standards (IPMS2 Residential). © nichecom 2023. Produced for Lawrence Rand. REF: 966238



Lawrence Rand

Lawrence Rand, 106 Victoria Road - HA4 0AL

01895 632211

Info@lawrence-rand.co.uk

www.lawrence-rand.co.uk/



LAWRENCE RAND