



LAWRENCE RAND

Torcross Road, Ruislip

£569,000



Torcross Road

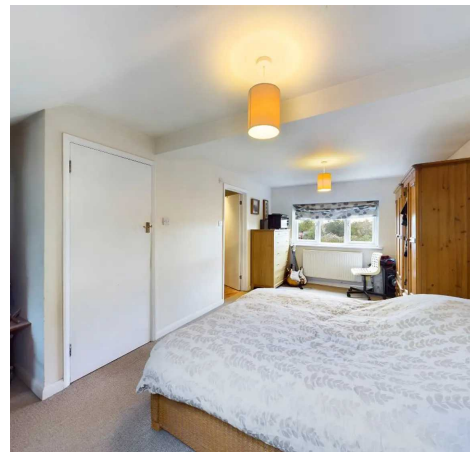
Ruislip, Ruislip

A larger than average four bedroom, two bathroom 1930's built terrace house, situated within easy reach of the local shops and station, as well as a number of well-regarded local schools.

Council Tax band: D

Tenure: Freehold

- 1930's Built Terrace House
- Master Bedroom with En-Suite
- 3 Further Bedrooms
- Off Street Parking
- Good Size Rear Garden
- Potential for Rear Extension (stp)
- Open Plan Kitchen/Diner





96 Torcross Road

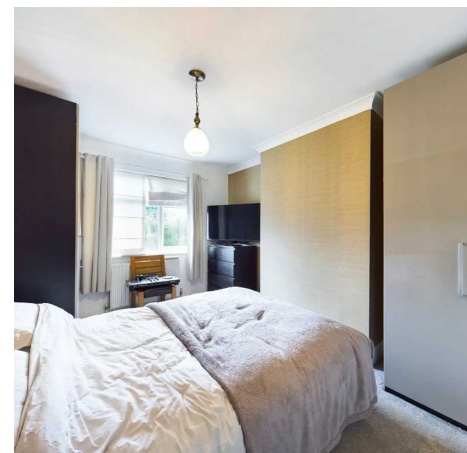
Ruislip, Ruislip

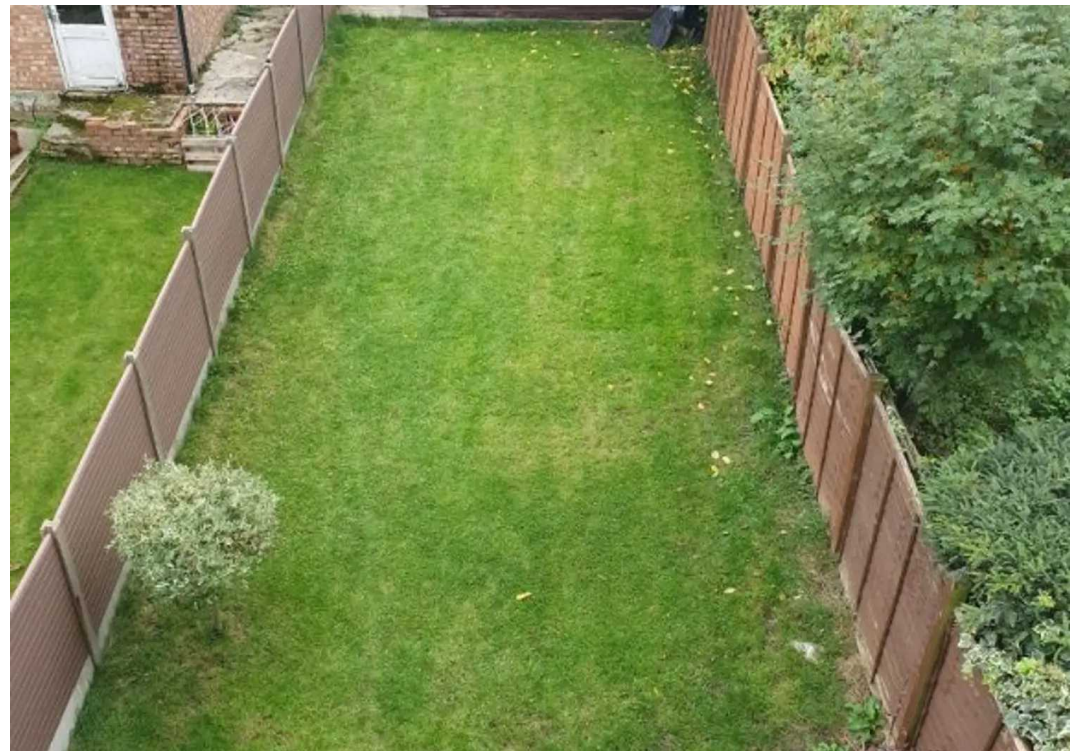
A larger than average four bedroom, two bathroom 1930's built terrace house, situated within easy reach of the local shops and station, as well as a number of well-regarded local schools.

Council Tax band: D

Tenure: Freehold

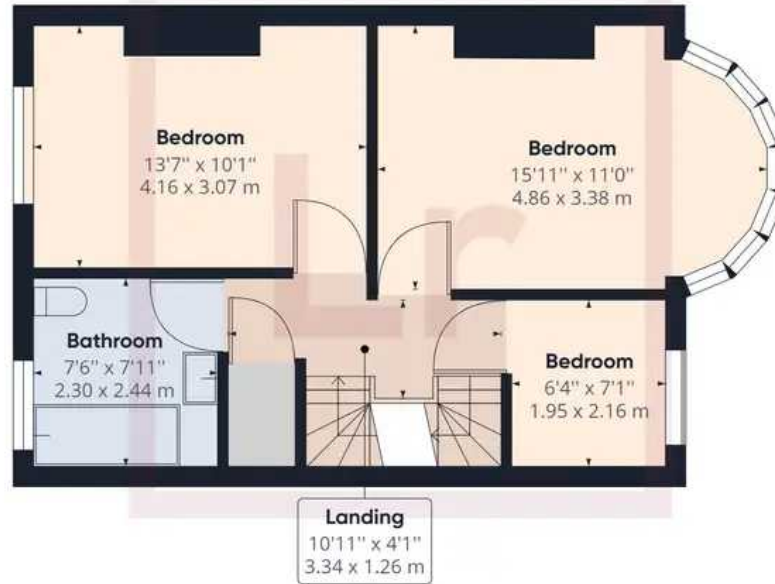
- 1930's Built Terrace House
- Master Bedroom with En-Suite
- 3 Further Bedrooms
- Off Street Parking
- Good Size Rear Garden
- Potential for Rear Extension (stp)
- Open Plan Kitchen/Diner







Ground Floor Building 1



Floor 1 Building 1



Floor 2 Building 1

Approximate total area⁽¹⁾

1234.38 ft²

114.68 m²

(1) Excluding balconies and terraces

While every attempt has been made to ensure accuracy, all measurements are approximate, not to scale. This floor plan is for illustrative purposes only.

GIRAFFE360



Lawrence Rand

Lawrence Rand, 106 Victoria Road - HA4 0AL

01895 632211

Info@lawrence-rand.co.uk

www.lawrence-rand.co.uk/



LAWRENCE RAND