



24 Bessingby Road, Ruislip

Ruislip

Offers in Region of **£500,000**



LAWRENCE RAND

24 Bessingby Road

Ruislip, Ruislip

A delightful three-bedroom terraced house in the heart of Ruislip Manor in immaculate condition throughout with en-suite w/c, South-facing garden and off-street parking.

Council Tax band: D

Tenure: Freehold

EPC Energy Efficiency Rating: D

EPC Environmental Impact Rating: G

- Off street parking
- Master with ensuite WC
- Garage with gated rear access
- Great transport links
- Highly regarded local schools
- Three bedrooms
- Spacious kitchen
- Complete upper chain





Lr LAWRENCE RAN



Lr LAWRENCE RAN



Lr LAWRENCE RAN



Lr LAWRENCE RAN



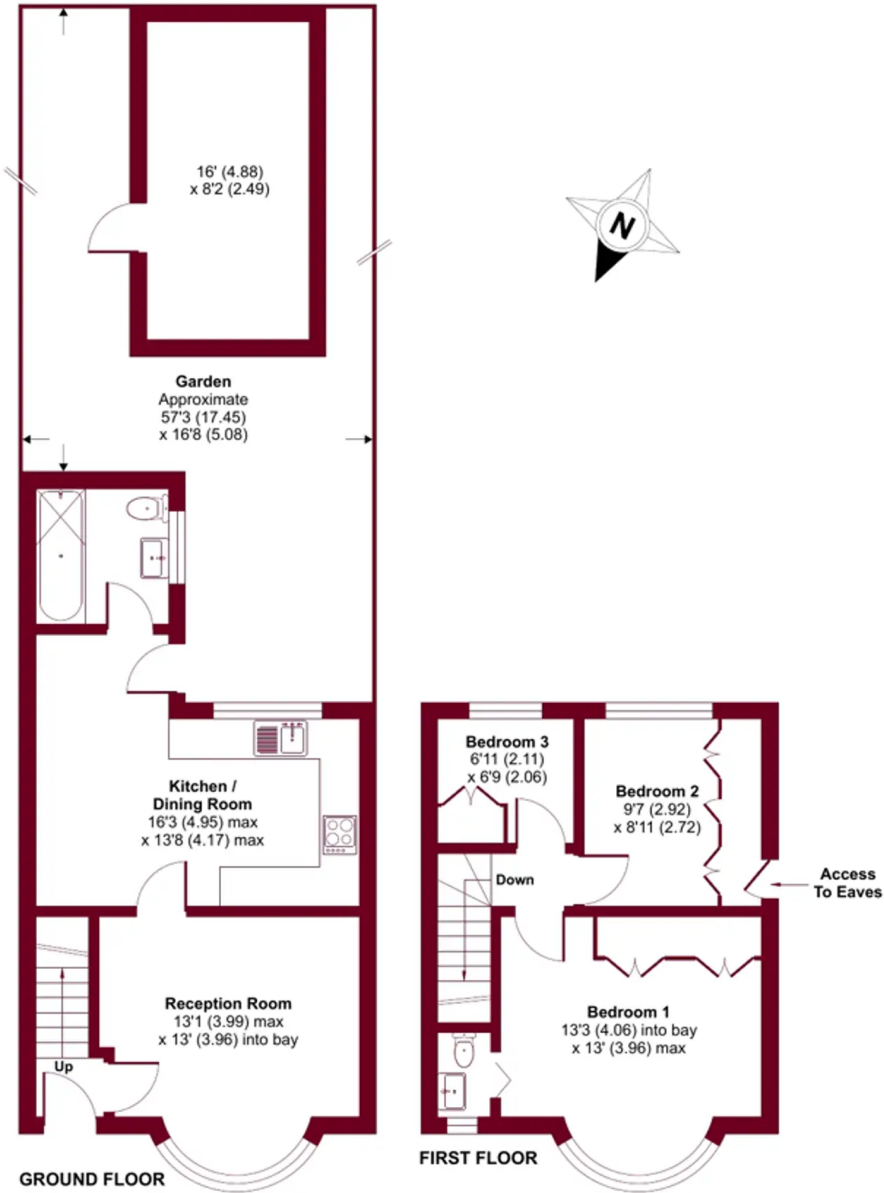
Ruislip, Middlesex, HA4

Approximate Area = 759 sq ft / 70.5 sq m

Outbuilding = 131 sq ft / 12.2 sq m

Total = 890 sq ft / 82.7 sq m

For identification only - Not to scale



Floor plan produced in accordance with RICS Property Measurement Standards incorporating International Property Measurement Standards (IPMS2 Residential). © nîchecom 2023. Produced for Lawrence Rand. REF: 955408



Lawrence Rand

Lawrence Rand, 106 Victoria Road - HA4 0AL

01895 632211

Info@lawrence-rand.co.uk

www.lawrence-rand.co.uk/



LAWRENCE RAND