



**LAWRENCE RAND**

**34 Castle Road, Northolt**  
**£530,000**



## 34 Castle Road

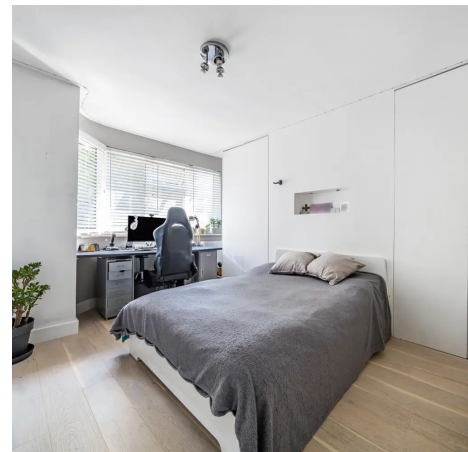
Northolt, Northolt

A really well-presented three bedroom end of terrace family home situated in this popular residential location with access to Northolt Central line tube and the extensive shopping facilities, as well as local schools. Potential to extend (stpp).

Council Tax band: D

Tenure: Freehold

- End of terrace house
- Excellent condition
- Three bedrooms
- Popular residential location
- Close to amenities & Schools
- Great transport links
- Generous garden
- Potential to extend (stpp)







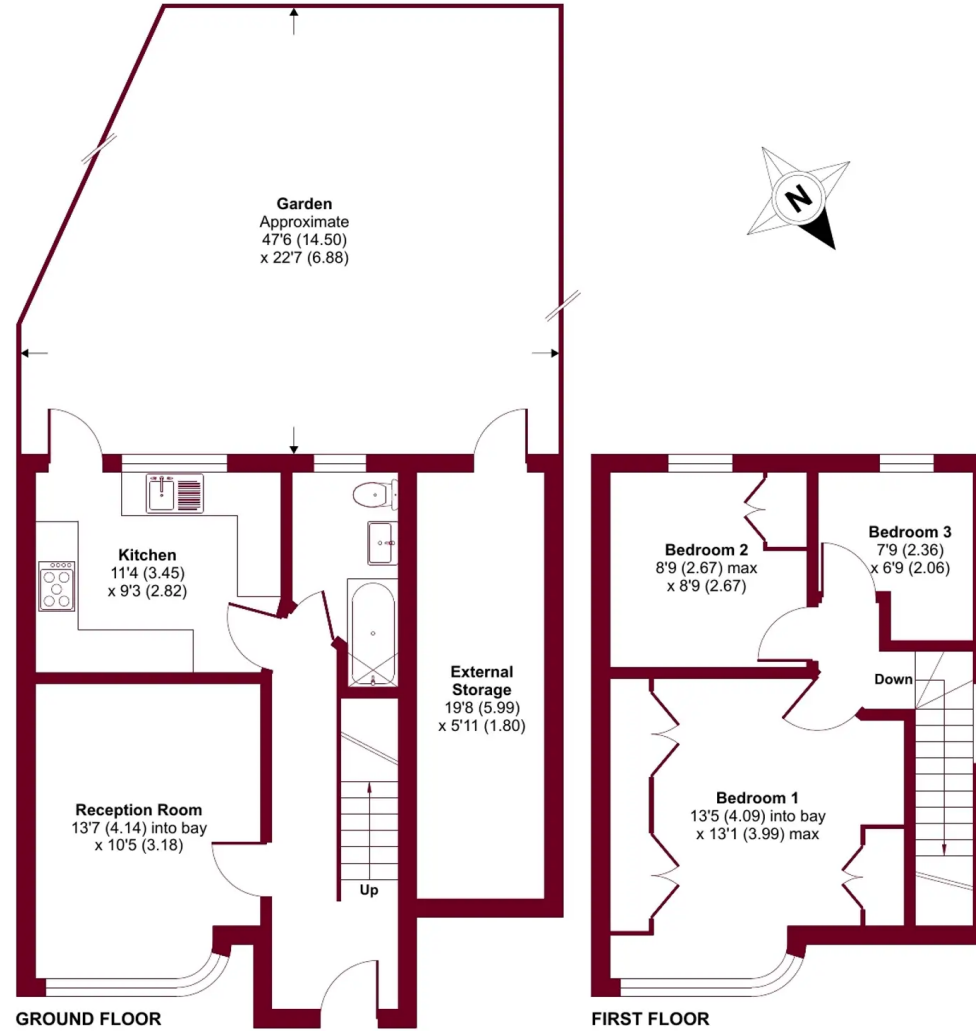
# Castle Road, Northolt, Middlesex, UB5

Approximate Area = 762 sq ft / 70.7 sq m

External Storage = 116 sq ft / 10.7 sq m

Total = 878 sq ft / 81.4 sq m

For identification only - Not to scale





## Lawrence Rand

Lawrence Rand, 106 Victoria Road - HA4 0AL

01895 632211

[Info@lawrence-rand.co.uk](mailto:Info@lawrence-rand.co.uk)

[www.lawrence-rand.co.uk/](http://www.lawrence-rand.co.uk/)



**LAWRENCE RAND**