



LAWRENCE RAND

Flamborough Road, Ruislip

£575,000



29 Flamborough Road

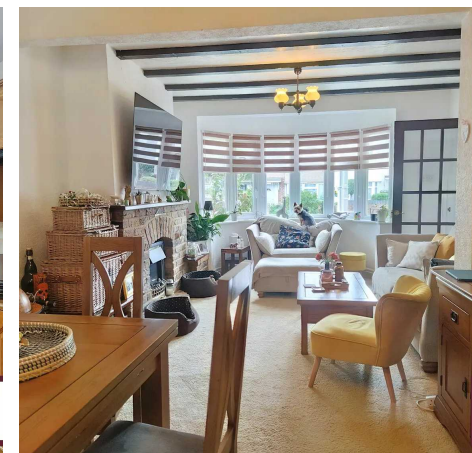
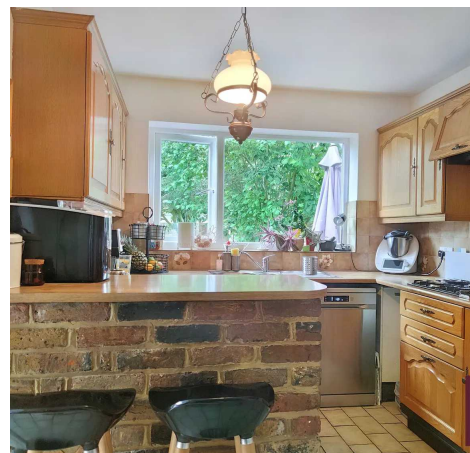
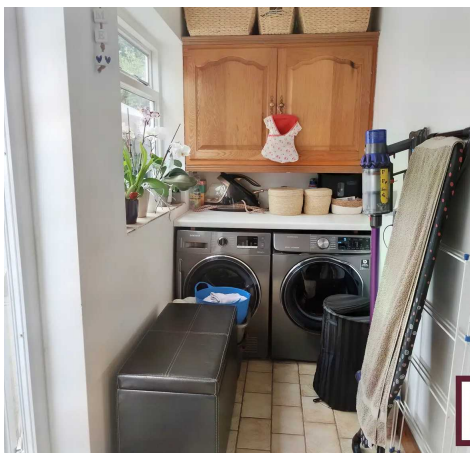
Ruislip, Ruislip

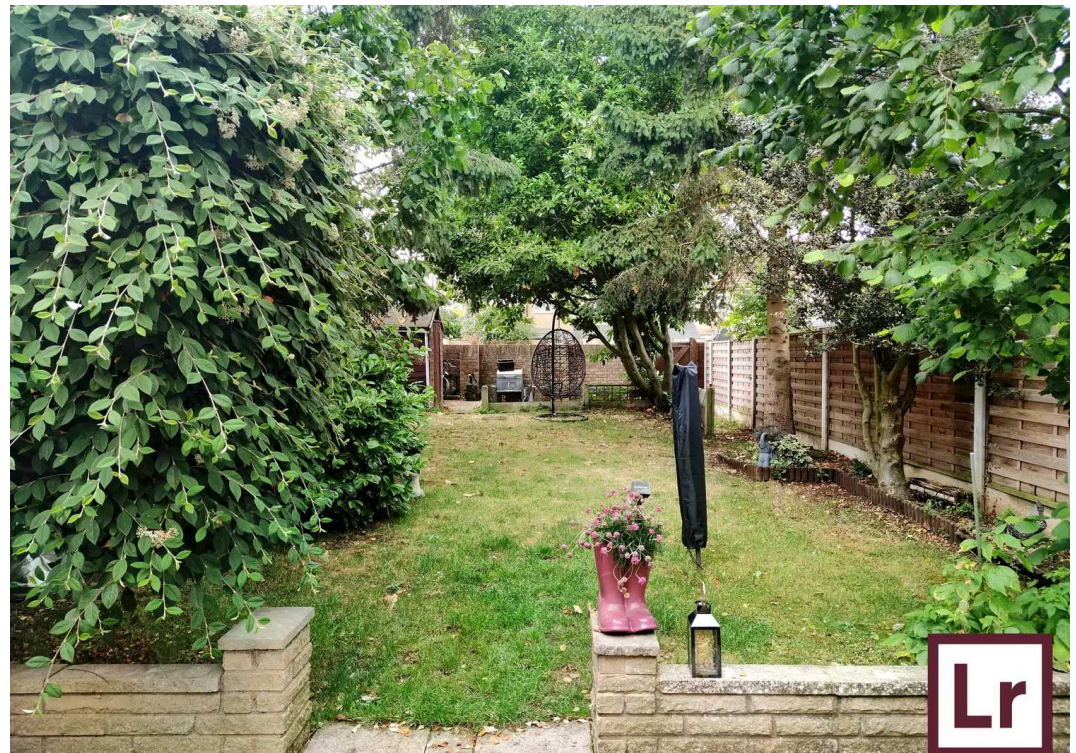
A three-bedroom end of terrace house situated on this quiet residential road with a large rear garden and no onward chain.

Council Tax band: D

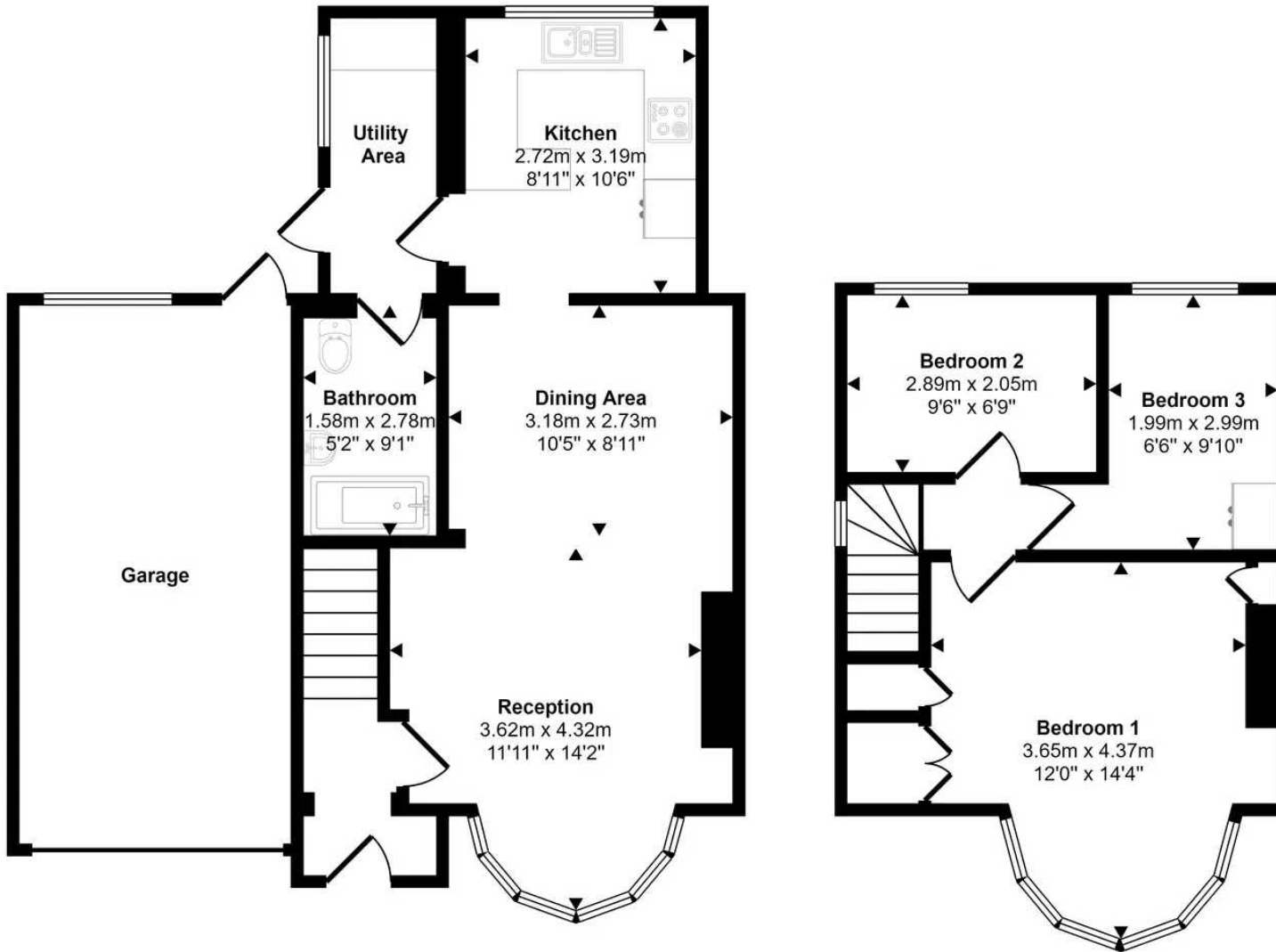
Tenure: Freehold

- NO CHAIN
- End of Terrace House
- Three bedrooms
- Large garden
- Garage and own driveway
- Good transport links





Approx Gross Internal Area
100 sq m / 1080 sq ft



Ground Floor
Approx 68 sq m / 728 sq ft

First Floor
Approx 33 sq m / 352 sq ft

This floorplan is only for illustrative purposes and is not to scale. Measurements of rooms, doors, windows, and any items are approximate and no responsibility is taken for any error, omission or mis-statement. Icons of items such as bathroom suites are representations only and may not look like the real items. Made with Made Snappy 360.



Lawrence Rand

Lawrence Rand, 106 Victoria Road - HA4 0AL

01895 632211

Info@lawrence-rand.co.uk

www.lawrence-rand.co.uk/



LAWRENCE RAND